

CHEERS project update

Cleveland Metroparks Board Of Park Commissioners
August 17, 2023



Partners

CHEERS - Cleveland Harbor Eastern Embayment Resilience Strategy



Cleveland City Council



City of Cleveland



Ohio Department of Natural Resources



Ohio Department of Transportation



The Port of Cleveland



Cleveland Metroparks



Black Environmental Leaders Association

TO DOWNTOWN CLEVELAND >



project design team

ARUP

Project Management, Civil, Electrical, Lighting, Sustainability, Transportation, Resiliency, Bridge, Cost Estimating, & Financing Strategy



Project Management, Landscape Architecture, Community Engagement



Coastal Engineering, Surveying and Submerged Lands Lease



Ecology and Habitat Designs

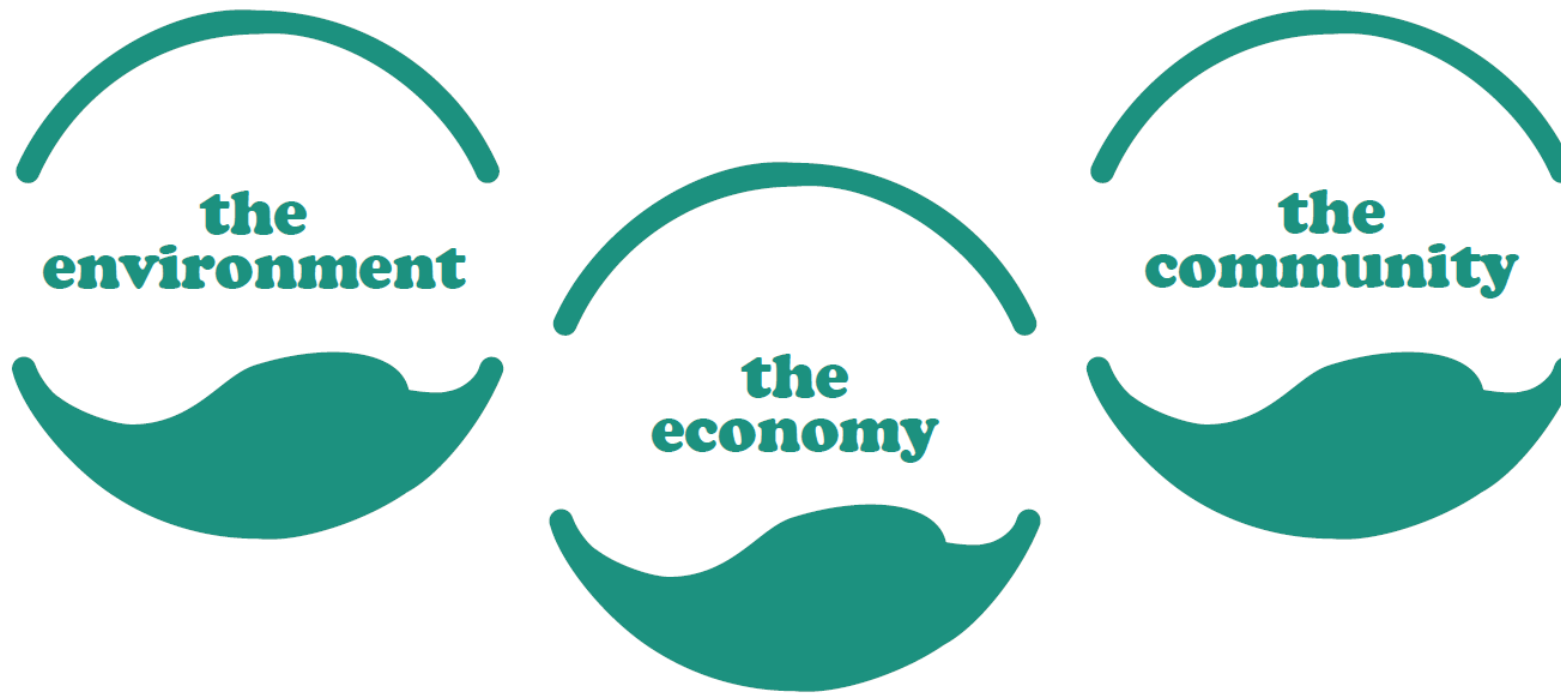
ASC
GROUP, INC.

Environmental, Cultural, & Historical Consulting



Geotechnical Engineering

The strategy is focused on developing an **equitable** and **resilient** future for Cleveland's east side lakefront and centers existing residents



Where are we in the process?

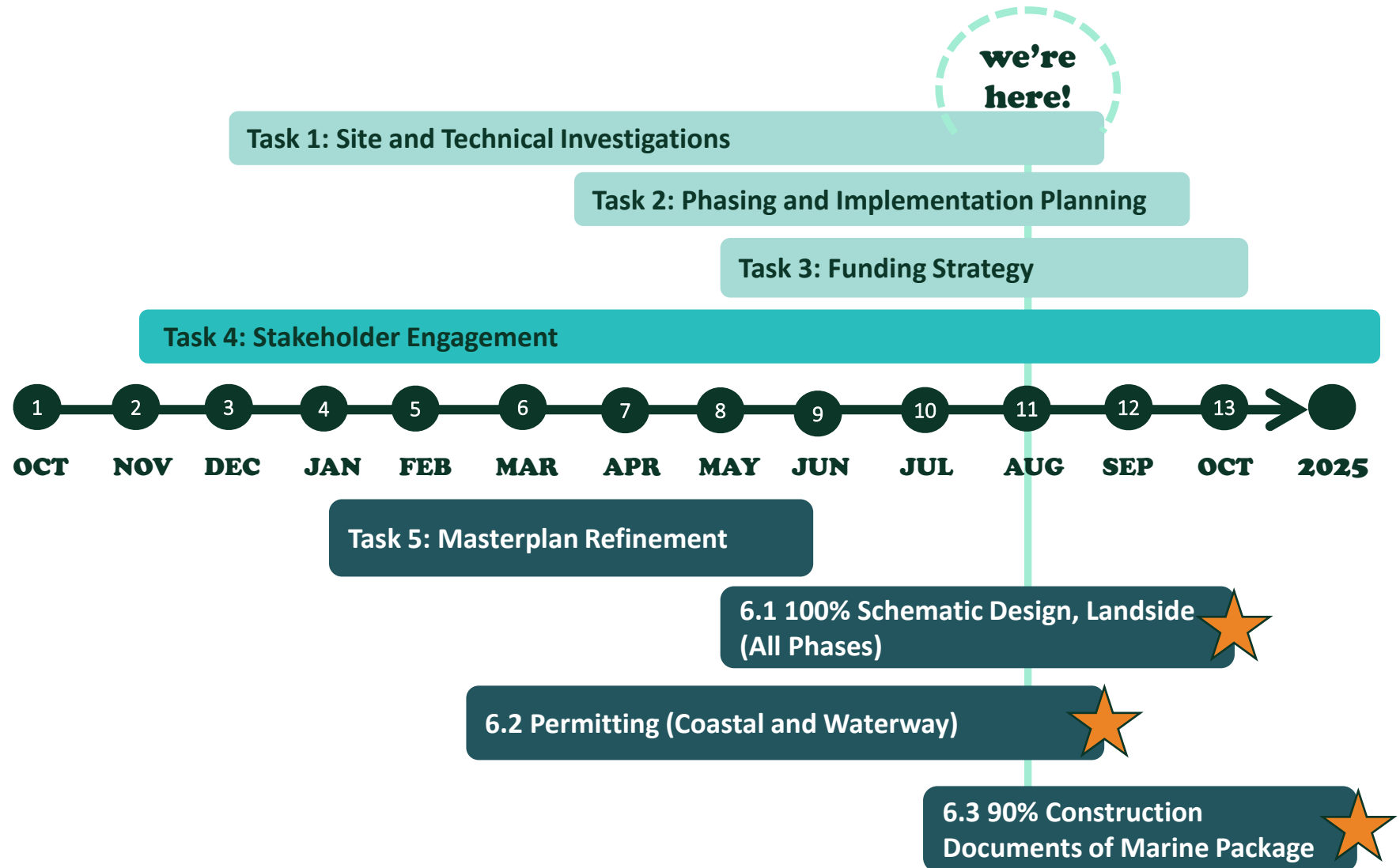
Site Investigations
& Enabling Studies

Engagement

Design &
Permitting



Major Grant and
Project Milestones



Engagement

What have we been up to?

- + Community and Stakeholder Engagement
- + Site Enabling Studies and Findings
- + Masterplan Refinement Process and Revised Plan
- + Project Partner Workshops
- + Construction Phasing and Sequencing
- + Habitat and Program Refinement
- + Funding and Grant Strategy
- + USACE Coordination and Benefit-Cost Assessments



Engaged over 200 people through in-person events and virtual survey!

Discuss programs, features, and new park amenities.

Relationship building with adjacent neighborhoods.

Highlight access to parks as a driver of health.

Safe and accessible connections between neighborhoods and the lake

TOP 3 PROJECTS



THE COVE



THE SHORE



GREENWAYS



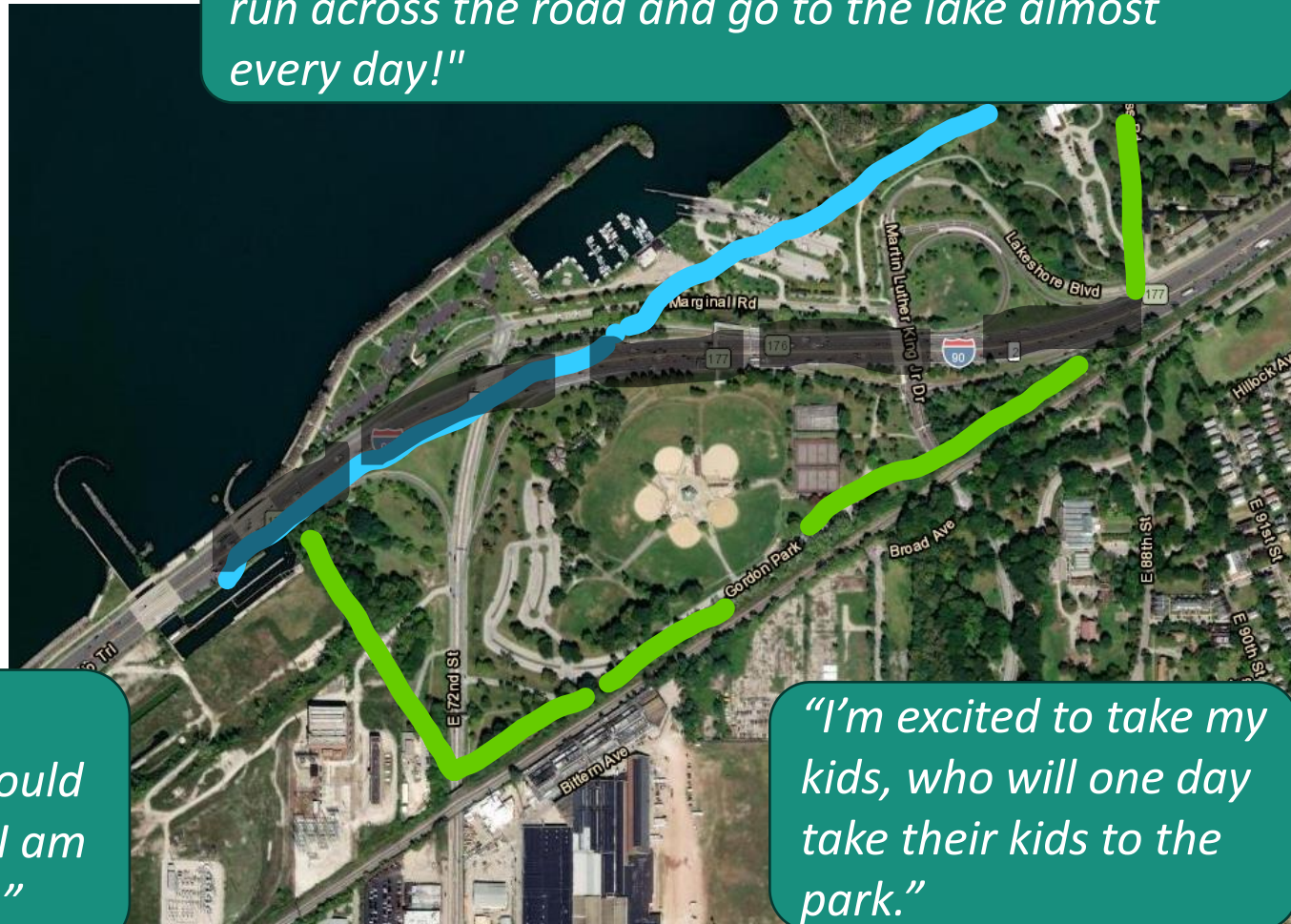
We talked about equity and park experience

Accessibility, provide equal and intentional access to the park and lakefront for the local community

Highlight generational narratives, provide space to hear about the different lived experiences and evolution of the lakefront from the community

More educational opportunities, group events, and programming - especially for kids

"I remember before I-90 my brothers and I would run across the road and go to the lake almost every day!"



"MLK and gardens didn't used to exist for us (African Americans). It was forbidden, but I would ride my bike down there to see the lake. Now I am the president of the African American garden."

"I'm excited to take my kids, who will one day take their kids to the park."

Partner Site Visits & Workshops

+ We took a closer look at:

Landform and shape, Edge conditions, Programming, Access, Scale, User Experience

+ We met with experts in:

Resilient waterfront design, community equity and avoiding resident displacement, and phased implementation of park components



Little Island



Hunters Point South



Brooklyn Bridge Park

Master Plan Refinement

Connect with Nature

Excitement over more plants and animals

Maintain existing fishing areas during construction

Potential programming ideas: community tree care program to adopt/plant a tree

Touch the Water

ENHANCEMENTS TO ACCESS



PEDESTRIAN EXPERIENCE ACROSS I-90



NEW PEDESTRIAN BRIDGE

Most use E 72nd St, improve lighting and perception of safety

Consistent and connected bikeways (from the neighborhood and connecting to the west side)

Improve **Gordon Park pedestrian bridge** (visual interest and better ground connection)

Play at the Shore

TOP 3 WAYS TO USE THE LAKEFRONT



BOATING + KAYAKING



PICNIC / FLEX SPACE



WALKS / BOARDWALK SPACE

Better bike infrastructure and access to the lakefront with bike network in the park

Strong interest in **water activities** – boating, kayaking, and fishing and places to rent equipment

You and the Lake!

Currently Do At The Lake

- Most of the activity is around the E 55th St Marina for fishing, North Gordon Park, and the Nature Preserve.
- Top activities include: Fishing, Bike/Scooter, Walking

Want To Do At The Lake

- What people want to see most at the lake is as much fishing as possible, better access from the neighborhoods, new or improvements to pedestrian bridges, and well lit trails and plenty of amenities within the park.
- Some of the proposed amenities or activities include: food truck pavilion, places for concerts / live music, renovate & reuse of old aquarium, land bridges, and viewsheds for a “photo-op” of the view

Excited To Do At The Lake

- People are most excited to have access and to have the opportunity to spend more time at the lakefront.
- Top projects or experiences people are looking forward to are: biking & walking trails, nature programs, kayaking (kayak rentals), having consistent public access.



Site Investigations & Enabling Studies

Cultural and Environmental assessments were conducted



- ✓ Section 106 Scoping Request
 - The proposed development outlined in the masterplan will have no effect on historic properties. Substantial changes to the project design should be coordinated with SHPO.

- ✓ Level 1 Ecological Survey Report
 - Status – completed on March 31
 - ***Phase II ESA is recommended prior to construction***
 - ***Excavation within 300-ft of the boundaries of the Gordon Park Landfill will require a Chapter 513 Permit from the Ohio EPA.***



Local and regional ecological reference site visits complete



"Naturalized" Dredge Disposal Areas

Natural Areas / Preserves

Focus on habitat zone analysis from reference site visits



Naturally Occurring Habitat Zones

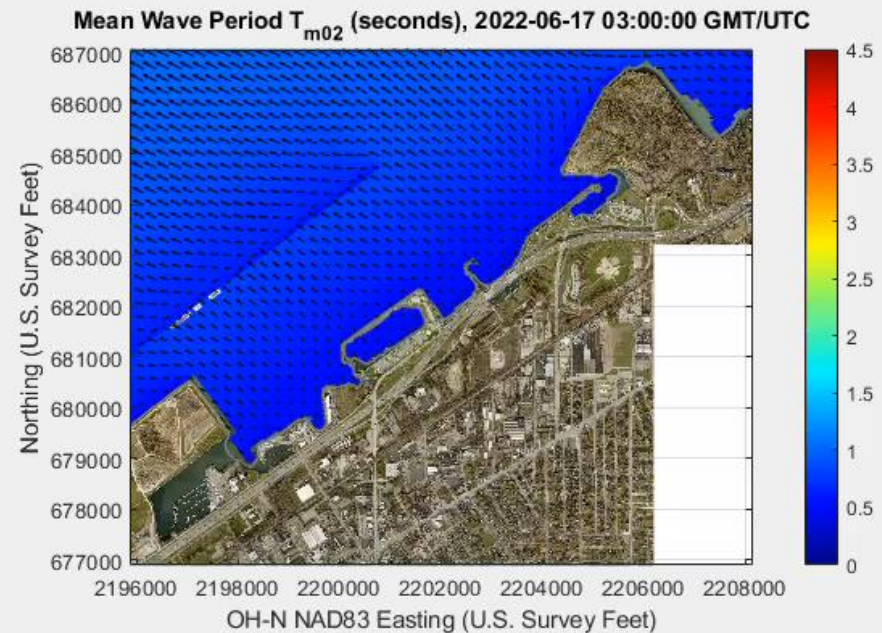
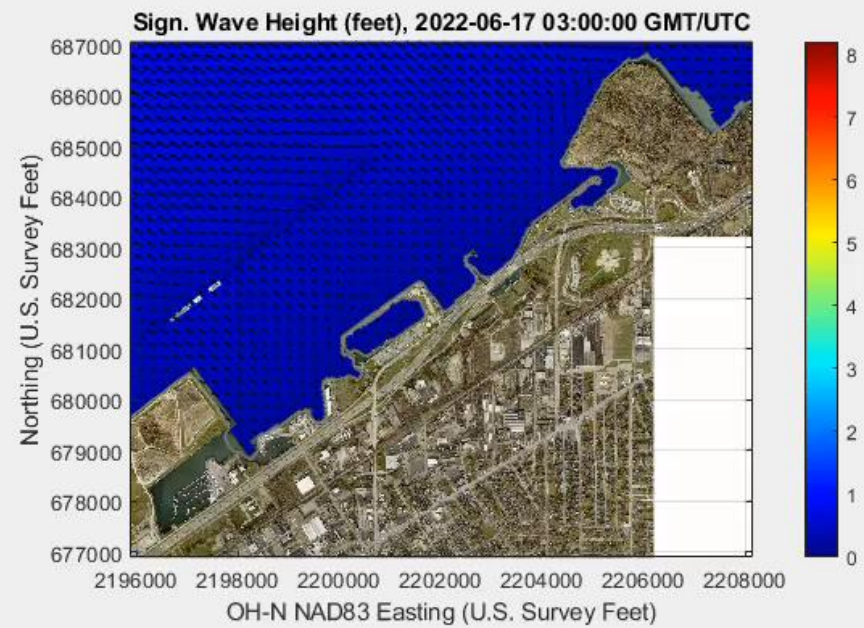
- Deepwater (>4' water depth)
- Shallow Near Shore (<4' water depth)
- Wetlands
- Meadow
- Upland Woodland

Human Dependent Habitat Zones

- Barrier Beach
- Revetments and Bioengineered Walls/Breakwaters
- Green Infrastructure/Stormwater Management

Creation of 3D flow model and wave modeling

Top = height
Bottom = period



Lots of coordination with regulatory agencies!

- U.S. Army Corps of Engineers
 - Section 404 Permit
 - Section 10 Permit
 - Section 408 Review
- Ohio Department of Natural Resources
 - Shore Structure Permit
 - Submerged Lands Leases
 - Consistency Certification
- Ohio Environmental Protection Agency
 - 401 Water Quality Certification
- U.S. Coastal Guard
 - Private Aids to Navigations
- Agency Coordination
 - Ohio History Connection
 - ODNR Division of Wildlife
 - U.S. Fish and Wildlife Service
 - City of Cleveland
 - Cleveland-Cuyahoga County Port Authority

Masterplan Refinement



LAKE ERIE

CLEVELAND METROPARKS
LAKEFRONT RESERVATION

E. 55th MARINA

GIDDINGS
HABITAT
SHORE

LEXIBLE EVENT
SPACE

PICNIC GROVE

55th STREET

LAKESHORE BOULEVARD

E. 72
GATEWAY

INTERCITY
YACHT
CLUB

DOAN HABITAT
SHORE

NORTH
GORDON
PARK

CLEVELAND LAKEFRONT
NATURE PRESERVE

THE GORDON
HILLS

THE COVE

THE LAKESHORE

THE ISLE

VIEWING PAVILION

PICNIC GROVE
LAWN

THE EASTERN
FISHING COVE

VIEWING STEPS

LAWN

PICNIC PAVILION

E. 55th FISHING

THE SHORE

THE LAUNCH

NATURE PLAY

THE HABITAT
LOOP

MARSH WALK

BOARDWALK
TRAIL

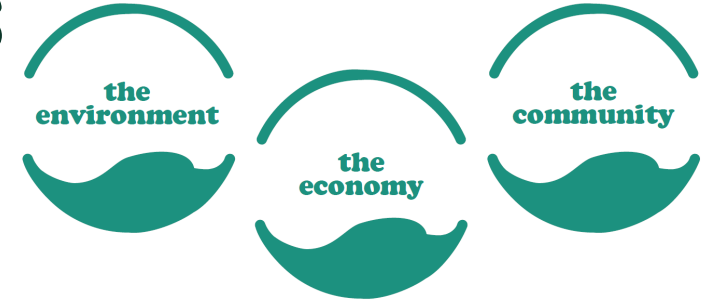
NATURE TRAIL

OVERLOOK

MULTI-USE TRAIL
NATURE PLAY

Design Refinement Goals

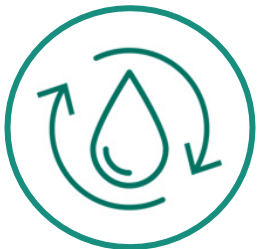
Creating a plan that maintains and expands on the CHEERS resiliency vision



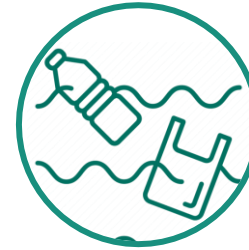
Reduce the cost by reducing the overall length of breakwater, while maintaining dredge fill capacity (20-years)



Expand ecology by creating diverse, site-appropriate terrestrial and aquatic habitats



Reduce the risk of adverse affects to water quality, provide movement of water through the cove to address water quality concerns



Address trash reduction, and consider overall park operations and maintenance



Expand upon the priorities identified in the Masterplan for programmatic opportunities, and continue to develop and refine the park programs based on community outreach events



Improve park access, links to the neighborhood and community, and expanded parking for new park amenities

The Refined Plan



Design Refinement Goals



Reduce Length of Breakwater



Expand Habitat



Water Quality



Debris Reduction



Expand Programmatic Opportunities



Improve Site Access



Partners:



Cleveland Harbor Eastern Embayment Resilience Strategy

05.2023

Construction Phasing and Sequencing

YEAR 00



0 300' 600'
SCALE: 1" = 300'





CHEERS PHASING + IMPLEMENTATION

07.2023

Partners:



Phase	New Park Area(AC)	Protected Water Areas (AC)	Dredge Capacity (CY + Years)
The View	17.4	-	750,000 (4 yrs)
The Launch & Bay	10.5	6	800,000 (4.5 yrs)
The Isle	15.3	-	900,000 (5 yrs)
Habitat Loop	12.9	-	550,000 (3 yrs)
Gordon Hills	9	-	220,000 (1.5 yrs)
The Cove	-	33	950,000 (4.5 yrs)
APPROX. TOTALS	69 +/-	39 +/-	4,070,000 CY

Funding and Grant Strategy

PROTECT Grant

- + The U.S. DOT is funding Competitive Resilience Improvement Grants through the Promoting Resilient Operations for Transformative, Efficient, and Cost-saving Transportation Program (PROTECT)

 **Mike Vielhaber**  @MVielhaber

A little more video of @ODOT_Cleveland trying their best to keep I-90 west clear from E72 to E55 as Lake Erie splashes over her banks. They're laying down about a years worth of salt and have a least 5 trucks making laps.



3:39 AM · Feb 3, 2023 · 986 Views

 **Mike Vielhaber**  @MVielhaber · Feb 3

I-90 west between E72 and E55 is an icy mess with this north wind pushing Lake Erie over her banks. A semi has crashed just before the E55th exit closing the right lane and the ramp to E55. This will probably be like this all day today.

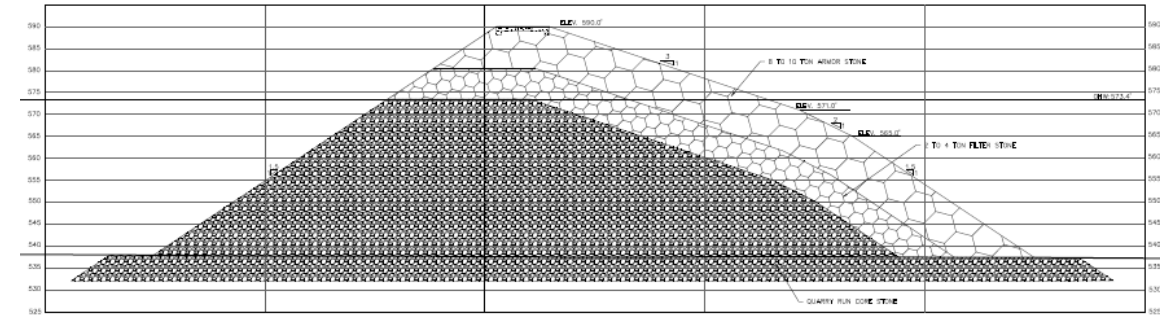


0:38 1,995 views

2 7 40 4,787

PROTECT Grant

- + \$44 M grant request ~ \$56 M project cost to construct 965 linear feet of breakwater & protect the most vulnerable portion of I-90
- + Port of Cleveland is the applicant
- + 20% local match from ODOT (\$5.6 M), NOACA (\$2.8 M), & Cleveland Metroparks (\$2.8 M)



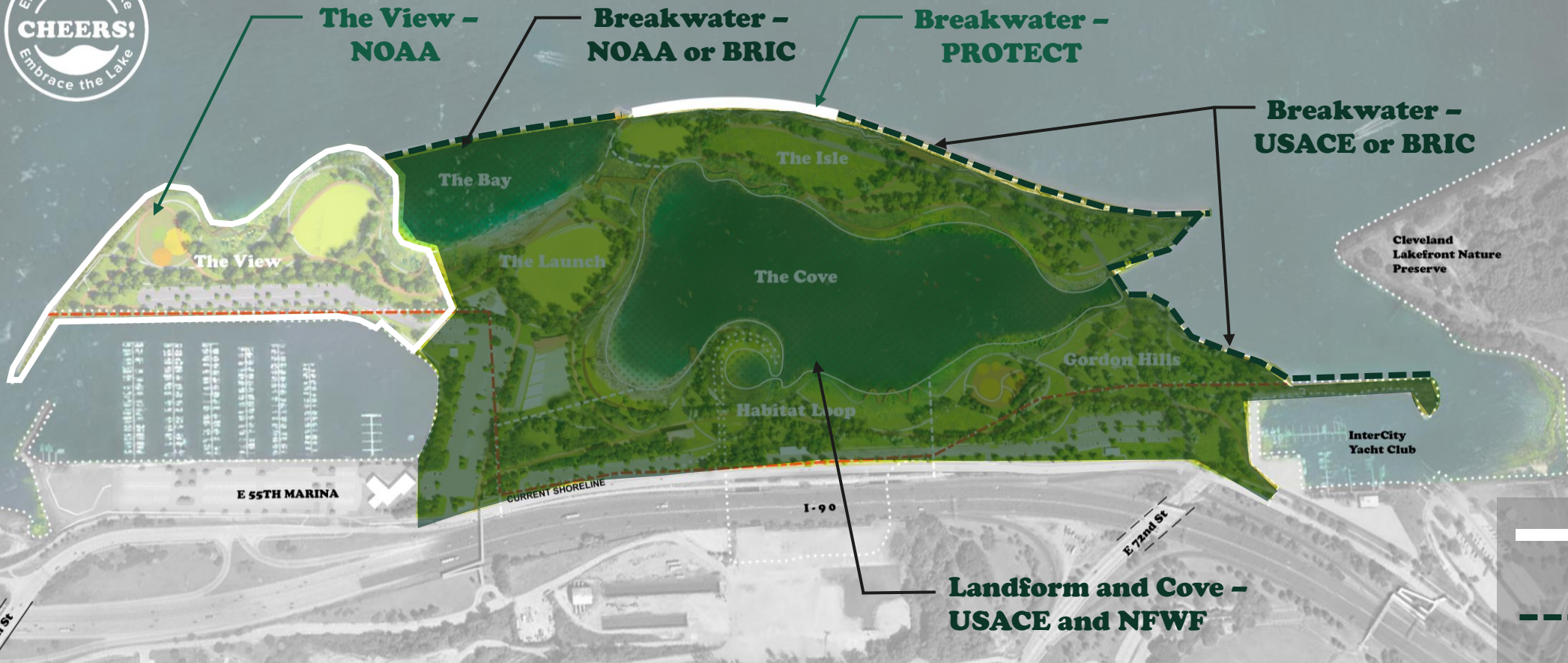
NOAA Grant

Climate Resilience Regional Challenge

- + A \$60 M grant award could construct 17 acres of “The View” landform and habitat areas
- + Letter of Intent due Monday, Aug. 21
- + Cleveland Metroparks is the applicant
- + No local match required



Putting It All Together



CLEVELAND HARBOR EASTERN EMBANKMENT RESILIENCE STRATEGY

CHEERS PHASING + IMPLEMENTATION

07.2023

Partners:



- Grant Application in progress
- Potential Future Opportunities