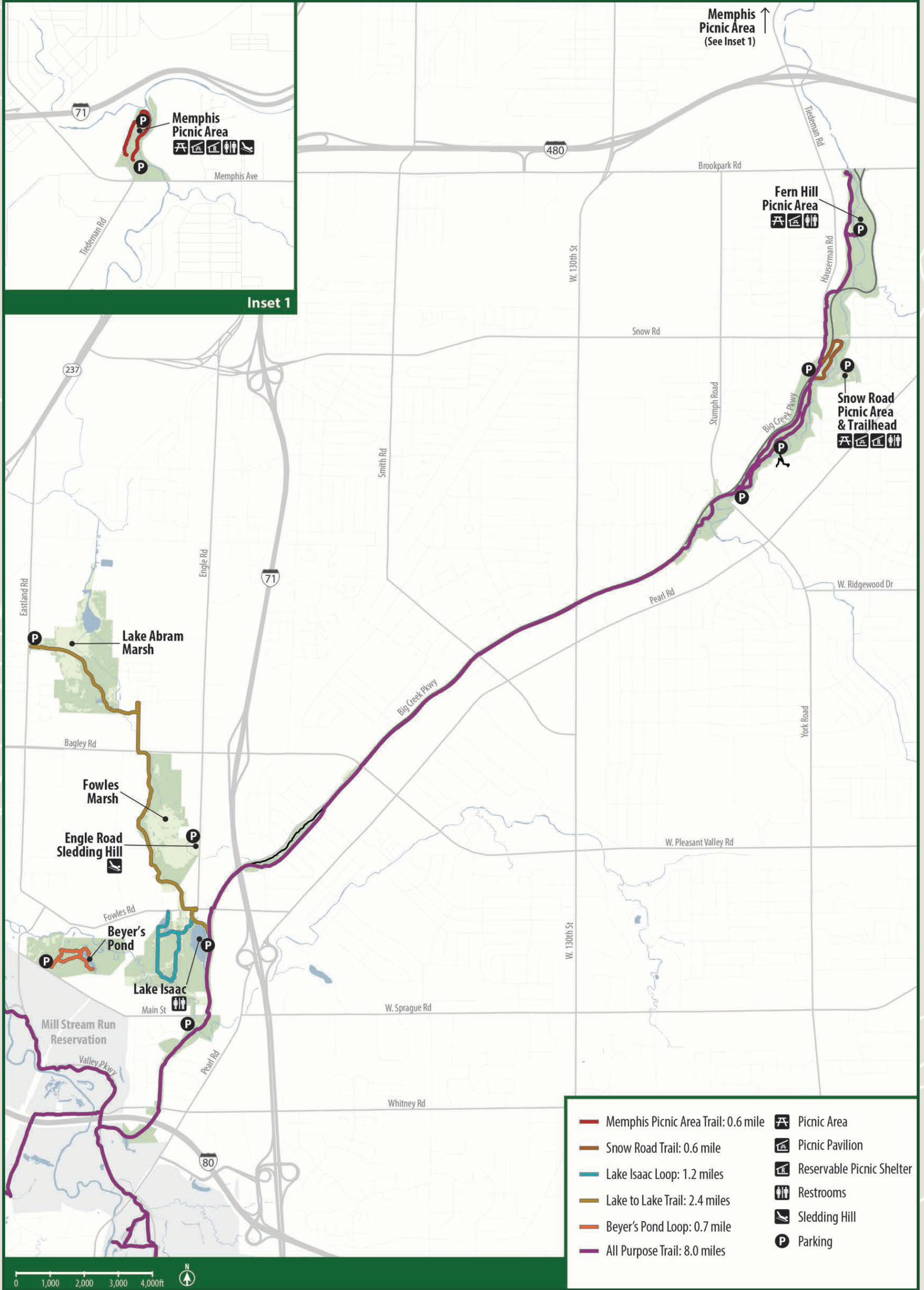


# Big Creek Reservation





## Big Creek Reservation:

Big Creek Reservation protects the largest glacial pothole/wetland complexes remaining in Cuyahoga County. Lakes Isaac and Abram are remnants of Ohio's Ice Age, and are important refuges for waterfowl and other birds. The natural wetlands in the southwestern portion of this reservation provide important ecosystem services, including flood and water quality protection. There are over 10 miles of All Purpose Trails in Big Creek Reservation, providing healthy and scenic walking and cycling commutes from Berea through Middleburg Heights and Parma to Brooklyn.

## Park Rules:

A complete set of Cleveland Metroparks rules and regulations can be found at [clevelandmetroparks.com](http://clevelandmetroparks.com).

- Respect the fragile nature of the environment by staying on the trails.
- Enjoy the natural environment, but do not disturb, destroy, deface, injure, or remove any part of the Park District including plants, animals, rocks, buildings, signs, equipment or property.
- Put litter and recyclables in appropriate collection containers even if it's not your own.
- Cats and dogs must be on a leash not more than 8-feet long and are the only pets permitted in the Park District. Clean up after your pet.
- Bicycles permitted on roadways and designated trails.
- Reservation hours 6 a.m. - 11 p.m.
- Feeding wildlife is prohibited (505.04).
- Fishing is permitted with an Ohio fishing license, except in posted areas.
- The use of alcohol and drugs is not permitted.

## Trail Etiquette:

- Control your speed and maintain a safe distance.
- Keep to the right, pass on the left. Signal with bell or voice when passing.
- Stay out of ski tracks when walking.
- Faster trail users yield to slower trail users.



Lake Isaac



Fern Hill Restoration Area

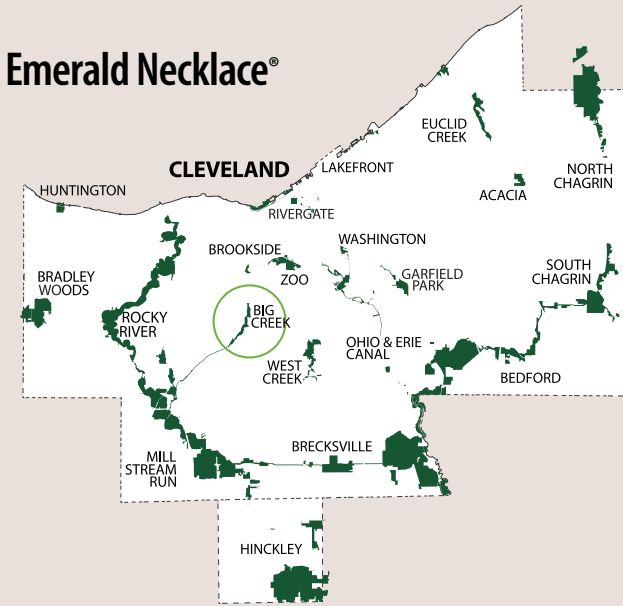


Beyer's Pond



Memphis Sledding Hill

## Emerald Necklace®



**Cleveland Metroparks Police  
Emergency Number:  
440-333-4911**

**Cleveland Metroparks Administrative Offices**  
4101 Fulton Parkway | Cleveland, Ohio 44144-1923  
216-635-3200

**Outdoor Recreation**  
216-341-1704



[clevelandmetroparks.com](http://clevelandmetroparks.com)



©Registered trademarks of Cleveland Metroparks. 2020

# Big Creek Reservation

---

## Trails Guide



**Cleveland  
Metroparks®**