

BEDFORD RESERVATION PARK PLAN

SEPTEMBER 2024

WARGO FARM

- Loop trail in place with one neighborhood connection
- Consider longer term connection north to Garfield Park and southeast to Dunham Park.

CEI CORRIDOR

- Monitor ATV use and any impacts to park property
- Consider future connectivity to rest of reservation

DUNHAM PARK

- Convert park shelter to a reserve facility and continue planting program to create buffer along north property line.

RESERVATION-WIDE CONSIDERATIONS

- Bedford is a legacy park, established in 1922. The park is designated as a National Natural Landmark and includes many archeological sites and 25 additional historic and cultural resources. Review GIS before projects involving site disturbances. Continued investment in maintaining historic resource features and park infrastructure and amenities is a priority.
- As new areas are added to the park, balance resource protection with any plans for facility development.
- Expand connections to adjacent communities and regional trails. Manage existing trails to minimize impacts to natural resources.
- Bedford Reservation is within the overall boundary of Cuyahoga Valley National Park and adjacent to the regional Towpath Trail and Summit County Bike & Hike. Coordinate initiatives and public education.
- The park includes 9.7 miles of the Buckeye Trail. Address maintenance and wayfinding and consider amenities to complement this statewide hiking trail.
- Identify appropriate location and add backcountry campsites
- Continue to monitor and enforce encroachments and unapproved actions on park property.

VALLEY VIEW WOODS

- Concern about ATV use and resource degradation within park - consider education and enforcement
- Consider longer term connection west to the Towpath Trail

HEMLOCK CREEK - NORTH

- Investigate opportunities for continued land protection north along Hemlock Creek to Turney Road and beyond
- Remove fish barrier

HEMLOCK CREEK PICNIC AREA

- Consider converting shelter to a reserve facility

MAINTENANCE COMPLEX

- Add a cold-storage equipment shed

ASTORHURST

- Develop picnic area with restroom and small shelter
- Consider site development including upgrades to ice cream shop parking, creek overlook, and operations
- Identify traffic calming & safety improvements at Gorge Pkwy/Dunham Rd crossing
- Consider working with partners to restore and enhance creek and floodplain connections
- Activate disc golf and consider additional facility improvements
- Incorporate south expansion (former CEI property) into trail network and signage

SAGAMORE CREEK CONNECTOR

- APT connection between Towpath and Hike and Bike in partnership with CVNP and Summit Metro Parks

- Proposed Trail
- Land Protection
- Proposed Improvement Site
- CM All Purpose Trail
- Other Paved Trail
- Buckeye Trail
- Other Trails
- Wetland Enhancement Project Area
- Water
- Wetland

0 1,000 2,000 3,000 4,000 ft

NORTH

BEDFORD RESERVATION

PARK PLAN

SEPTEMBER 2024

TINKER'S CREEK & NORTH SIDE OF VALLEY

- Continue Meadows Area / Circle Emerald habitat restoration. Develop a small trailhead and signage for Circle Emerald Bird Sanctuary.
- Consider mitigation to address Tinker's Creek stream bank erosion. Stabilize upstream from channelized area to protect high quality natural resources

HUTCHINSON FIELD - BEDFORD GLENS

- Link park trails to city sidewalk network to improve neighborhood access and connections with Downtown Bedford
- Explore land protection opportunities to buffer park and natural resources.
- Continue to enforce no dumping regulations at Hutchinson Field

2024 TORNADO DAMAGE

- Address and monitor impacts from storm such as encroachment of invasive species and spread of oak wilt
- Continue to monitor streams for large woody debris from downed trees

LOST MEADOWS RESERVE AREA

- Consider other uses for this area

BRIDAL VEIL FALLS AND DEERLICK CREEK

- Explore upstream land protection opportunities to mitigate development impacts on natural resources
- Study potential future accessibility improvements via bridle trail

GORGE PARKWAY

- (Dunham Rd. to Overlook Ln.) Designate and sign a new bridle trail connection from Astorhurst to the existing bridle trail along Gorge Parkway.
- Improve crossing at Dunham Road to Astorhurst.

ALEXANDER TRAILHEAD / SAGAMORE CREEK

- Continue trail rehabilitation. Explore creek crossing improvements for pedestrians. Coordinate with Sagamore Creek Connector to reroute users from roadway
- Install CXT (flush if possible) at this key access point

- Proposed Trail
- Land Protection
- Proposed Improvement Site
- CM All Purpose Trail
- Other Paved Trail
- Buckeye Trail
- Other Trails
- Wetland Enhancement Project Area
- Water
- Wetland



SAGAMORE HILLS

SUMMIT CO

0 1,000 2,000 3,000 4,000 ft

WILLIS PICNIC AREA
 • Partner with the City of Bedford to reduce environmental impacts from ballfield management

VIADUCT PARK (SEE AREA PLAN)
 • Improve connections to Viaduct Park and visibility from downtown Bedford, Hawthorn Parkway / Egbert Road, and Broadway with improved wayfinding and signage. Continue to support Bedford's connector trail and bridge proposal
 • Refer to the Viaduct Park Area Plan for newly expanded parkland including improved entry, parking, a four season shelter, and restrooms
 • Renovate lower overlook and supplement tree plantings
 • Address and monitor impacts from tornado damage

HAWTHORN PARKWAY
 • Maintain Buckeye Trail hiking and bridle trail while protecting sensitive vernal pools north of APT near Tinker's Creek

SOUTH CHAGRIN TRAIL CONNECTION
 • Pending all purpose trail connection to South Chagrin Reservation along Richmond Road funded through Clean Ohio; improvements to crossing and roadway funded through OPWC and managed by Glen Willow, along with link to Glen Willow's new trail to the southeast.

FORMER FIELD OFFICE
 • Due to existing utility connections, consider using former field office site for new flush restroom

EGBERT PICNIC AREA
 • Add electric service and lighting to facilitate evening programs
 • Consider a pedestrian-only low level suspension bridge crossing to connect trails on both sides of Tinker's Creek

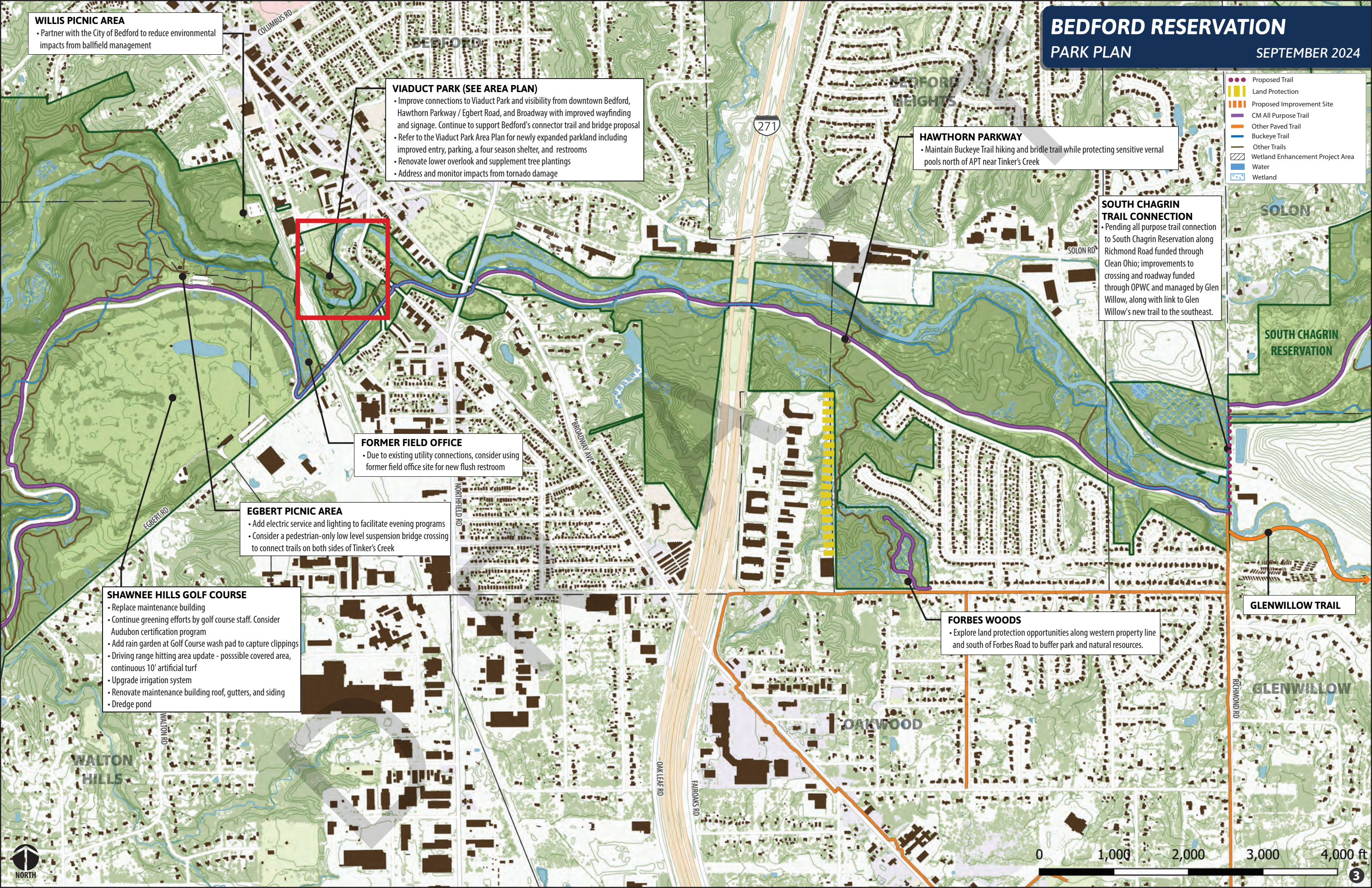
SHAWNEE HILLS GOLF COURSE
 • Replace maintenance building
 • Continue greening efforts by golf course staff. Consider Audubon certification program
 • Add rain garden at Golf Course wash pad to capture clippings
 • Driving range hitting area update - possible covered area, continuous 10' artificial turf
 • Upgrade irrigation system
 • Renovate maintenance building roof, gutters, and siding
 • Dredge pond

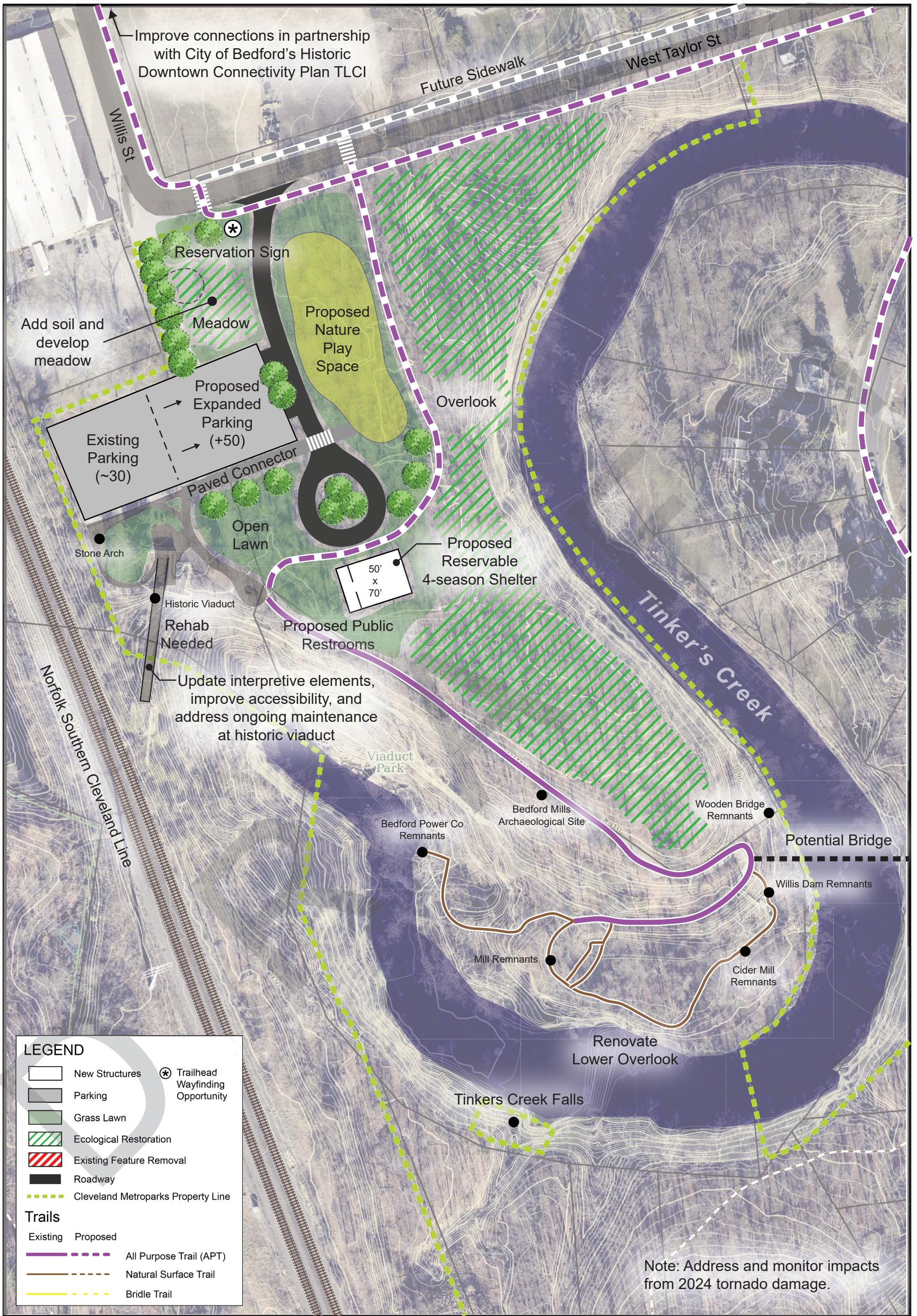
FORBES WOODS
 • Explore land protection opportunities along western property line and south of Forbes Road to buffer park and natural resources.

GLENWILLOW TRAIL

BEDFORD RESERVATION
PARK PLAN
 SEPTEMBER 2024

- Proposed Trail
- Land Protection
- Proposed Improvement Site
- CM All Purpose Trail
- Other Paved Trail
- Buckeye Trail
- Other Trails
- Wetland Enhancement Project Area
- Water
- Wetland





Viaduct Park

DRAFT

Bedford Reservation - 1" = 100'

