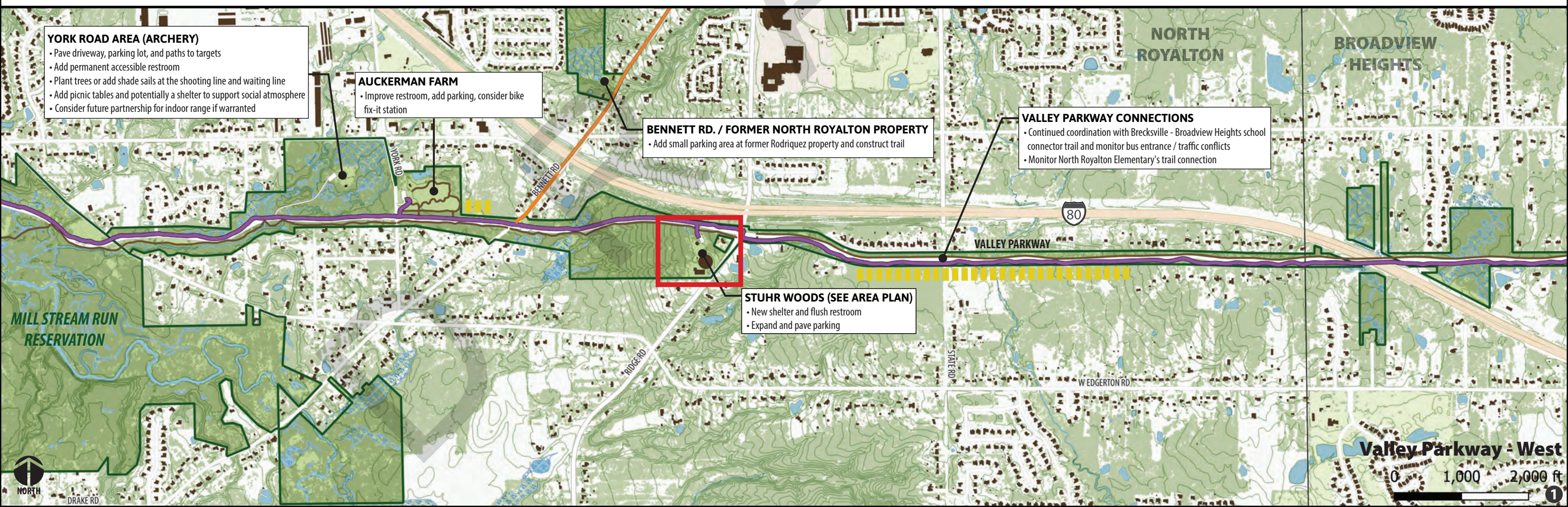
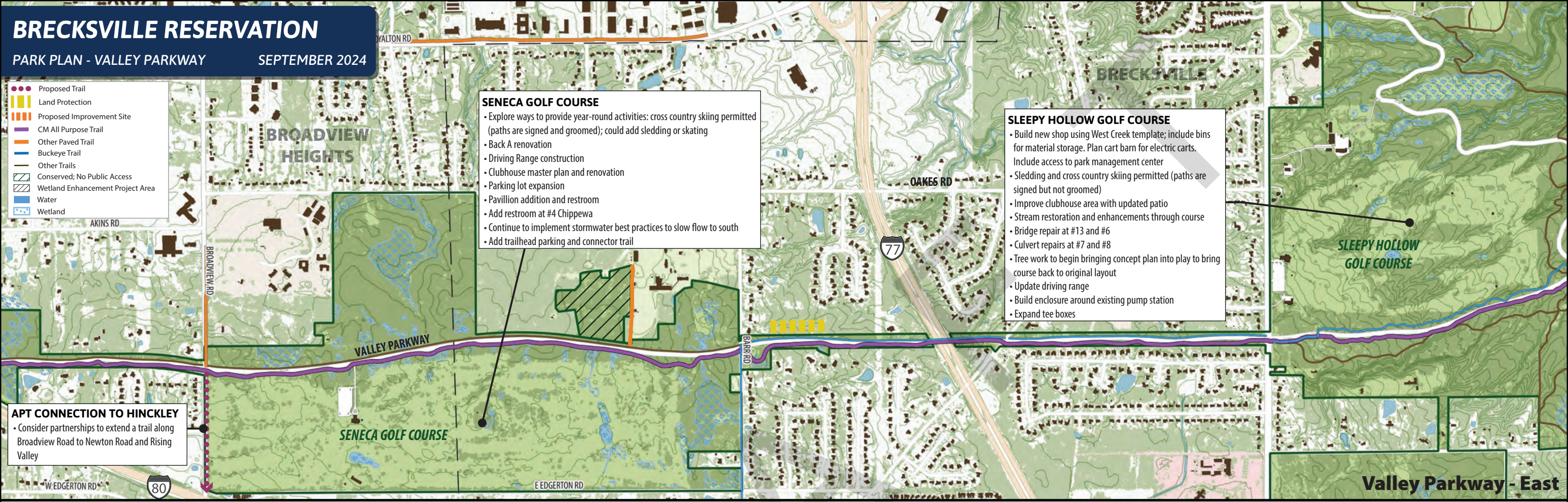


- Proposed Trail
- Land Protection
- Proposed Improvement Site
- CM All Purpose Trail
- Other Paved Trail
- Buckeye Trail
- Other Trails
- Conserved; No Public Access
- Wetland Enhancement Project Area
- Water
- Wetland



	Proposed Trail
	Land Protection
	Proposed Improvement Site
	CM All Purpose Trail
	Other Paved Trail
	Buckeye Trail
	Other Trails
	Conserved; No Public Access
	Wetland Enhancement Project Area
	Water
	Wetland

**PALMIERI AND GOODRICH PROPERTIES**

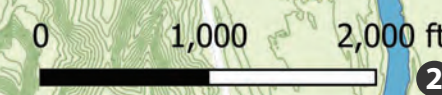
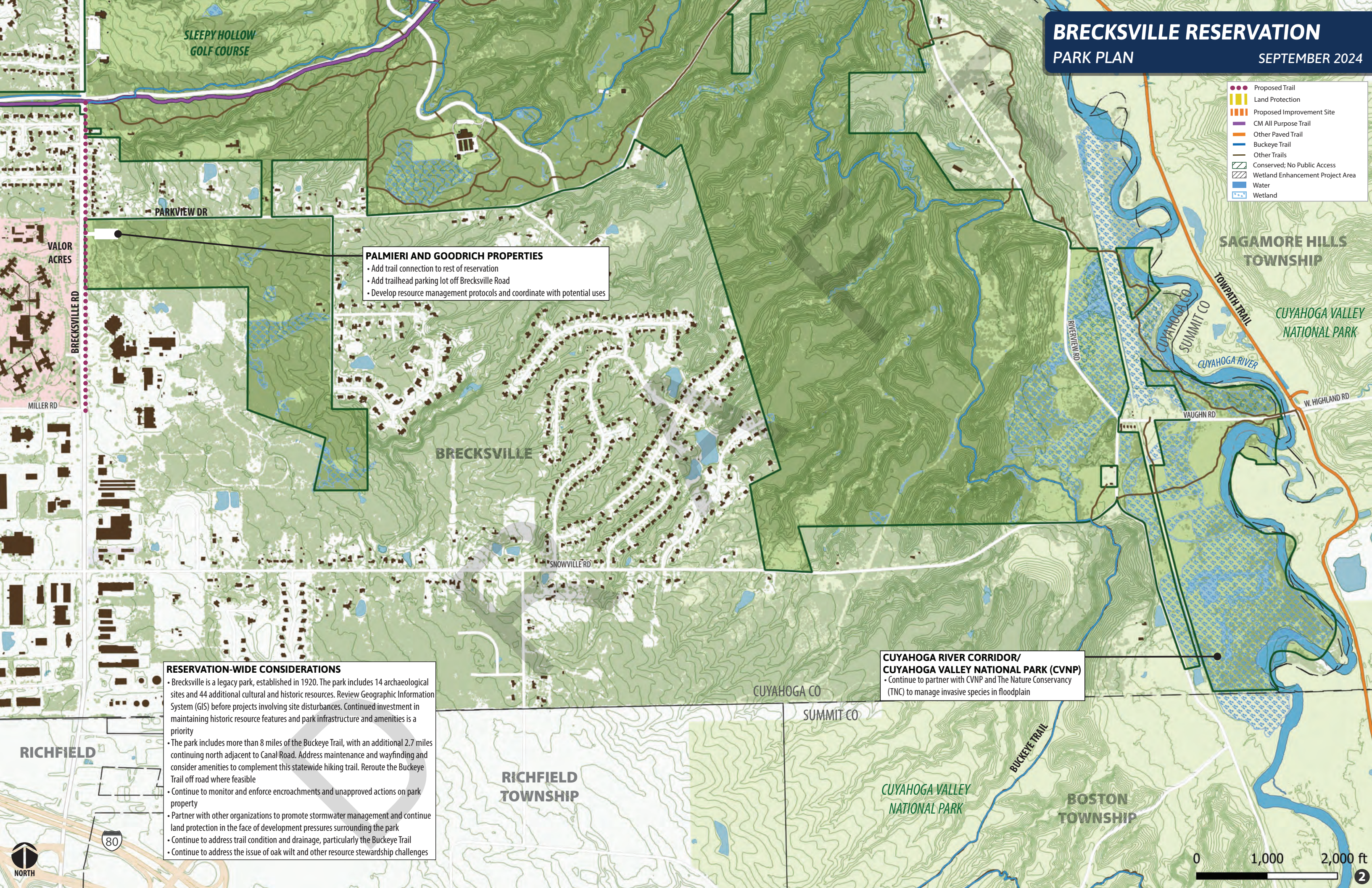
- Add trail connection to rest of reservation
- Add trailhead parking lot off Brecksville Road
- Develop resource management protocols and coordinate with potential uses

**CUYAHOGA RIVER CORRIDOR/  
 CUYAHOGA VALLEY NATIONAL PARK (CVNP)**

- Continue to partner with CVNP and The Nature Conservancy (TNC) to manage invasive species in floodplain

**RESERVATION-WIDE CONSIDERATIONS**

- Brecksville is a legacy park, established in 1920. The park includes 14 archaeological sites and 44 additional cultural and historic resources. Review Geographic Information System (GIS) before projects involving site disturbances. Continued investment in maintaining historic resource features and park infrastructure and amenities is a priority
- The park includes more than 8 miles of the Buckeye Trail, with an additional 2.7 miles continuing north adjacent to Canal Road. Address maintenance and wayfinding and consider amenities to complement this statewide hiking trail. Reroute the Buckeye Trail off road where feasible
- Continue to monitor and enforce encroachments and unapproved actions on park property
- Partner with other organizations to promote stormwater management and continue land protection in the face of development pressures surrounding the park
- Continue to address trail condition and drainage, particularly the Buckeye Trail
- Continue to address the issue of oak wilt and other resource stewardship challenges



- Proposed Trail
- Land Protection
- Proposed Improvement Site
- CM All Purpose Trail
- Other Paved Trail
- Buckeye Trail
- Other Trails
- Conserved; No Public Access
- Wetland Enhancement Project Area
- Water
- Wetland

**CHIPPEWA CREEK AREA**

- Develop stream restoration plan to mitigate severe bank erosion and reduce trail closures after rain events
- Extend Chippewa Creek Gorge trail to complete loop. Decommission excess routes

**KEELER MEMORIAL AND KEELER PICNIC AREA**

- Upgrade to flush restroom. Improve trail connections and wayfinding
- Decommission and restore unsanctioned routes (see Chippewa Creek Area notes)

**LOWER CHIPPEWA CREEK FORD & TRAIL BRIDGE**

- Replace existing Chippewa Creek Drive ford with bridge structure. Explore potential outside funding sources
- Evaluate erosion and sedimentation issues at trail bridge; consider replacement or combination with vehicular bridge. Explore potential outside funding sources

**CHIPPEWA CREEK GORGE SCENIC OVERLOOK / RT. 82 ENTRANCE**

- Coordinate with City of Brecksville on Rt 82 roadway and bridge improvements including pedestrian crossing and Chippewa Creek stabilization. Explore upstream watershed protection.
- Evaluate potential to relocate parking entry drive away from Rt. 82 intersection
- Replace overlook deck and improve accessibility
- Continue to maintain historic WPA overlook shelter

**TRAILSIDE PROGRAM CENTER**

- Install baffles to mitigate sound issues and upgrade AV system to accommodate educational programs and presentations

**BRECKSVILLE NATURE CENTER**

- Schedule repairs to roof (seal and repair), interior maintenance needs, and upgrades to back of house space to improve function while retaining historic character

**COMMUNITY CONNECTION**

- Work with the City of Brecksville to formalize existing path from Rec Center

**MEADOWS PICNIC AREA (SEE AREA PLAN)**

- Upgrade with enclosed four-season facility to better activate this central location within the park
- Add flush restroom

**MANAGEMENT CENTER**

- Determine facility needs and budget requirements. Consider maintenance, storage, Park Police, trails material storage, and Sleepy Hollow needs. Reduce building footprints to minimize stormwater impacts
- Add bins to consolidate material storage footprint
- Replace fuel pumps (2024 budget item)

**SQUIRE RICH MUSEUM**

- Enhancements recently completed

**SLEEPY HOLLOW GOLF COURSE - SEE SHEET 1**

**DEER LICK CAVE**

- Improve trail connections, upgrade stairs, and add wayfinding

**BRECKSVILLE STABLES**

- Continue working with Classical Attraction Dressage Society (CADS); facility needs new roof, painting, and exterior repairs

**SPRING MIGRATION SITES**

- Note vernal pool locations and protect from impacts
- Consider adding parking to support spring amphibian programs
- Consider underground migration tunnels as additional protection

**PLATEAU PICNIC AREA**

- Interpret history of the site
- Repair steps near shelter, potentially in partnership with the Buckeye Trail Association

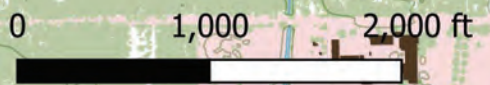
**OAK GROVE PICNIC AREA**

- Consider flush restrooms and enclosure of portions of the shelter to expand seasonal use

**OTTAWA POINT RESERVED PICNIC AREA**

- Upgrade stairs in area
- Continue to operate popular Backcountry Campsites along the Buckeye Trail

**CUYAHOGA VALLEY NATIONAL PARK AT STATION RD**



# BRECKSVILLE RESERVATION

## PARK PLAN

SEPTEMBER 2024

- Proposed Trail
- Land Protection
- Proposed Improvement Site
- CM All Purpose Trail
- Other Paved Trail
- Buckeye Trail
- Other Trails
- Conserved; No Public Access
- Wetland Enhancement Project Area
- Water
- Wetland

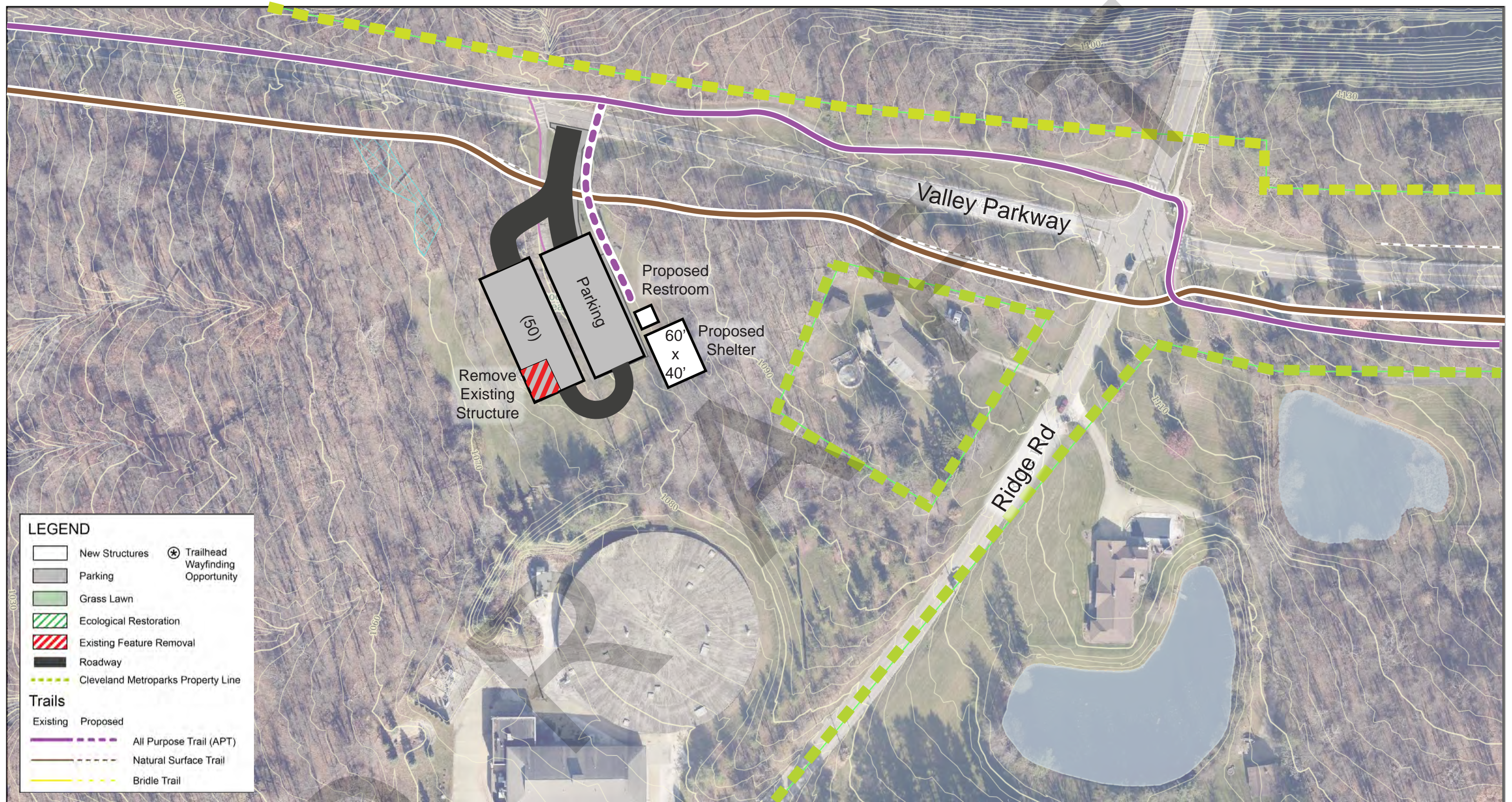
**SAGAMORE CONNECTOR**  
• Continue partnership to make this proposed key connection in the Emerald Necklace APT and provide appropriate wayfinding

**LOWER CHIPPEWA CREEK FORD & TRAIL BRIDGE**  
• Replace existing Chippewa Creek Drive ford with bridge structure. Explore potential outside funding sources  
• Evaluate erosion and sedimentation issues at trail bridge; consider replacement or combination with vehicular bridge. Explore potential outside funding sources

**STATION ROAD AREA**  
• Partner with Cuyahoga Valley National Park (CVNP); review proposed engineering drawings for improved bike and pedestrian links  
• Improve Buckeye Trail stream crossing; reroute off road if possible

**CUYAHOGA RIVER CORRIDOR / CVNP**  
• Continue to partner with CVNP and TNC to manage invasive species in floodplain



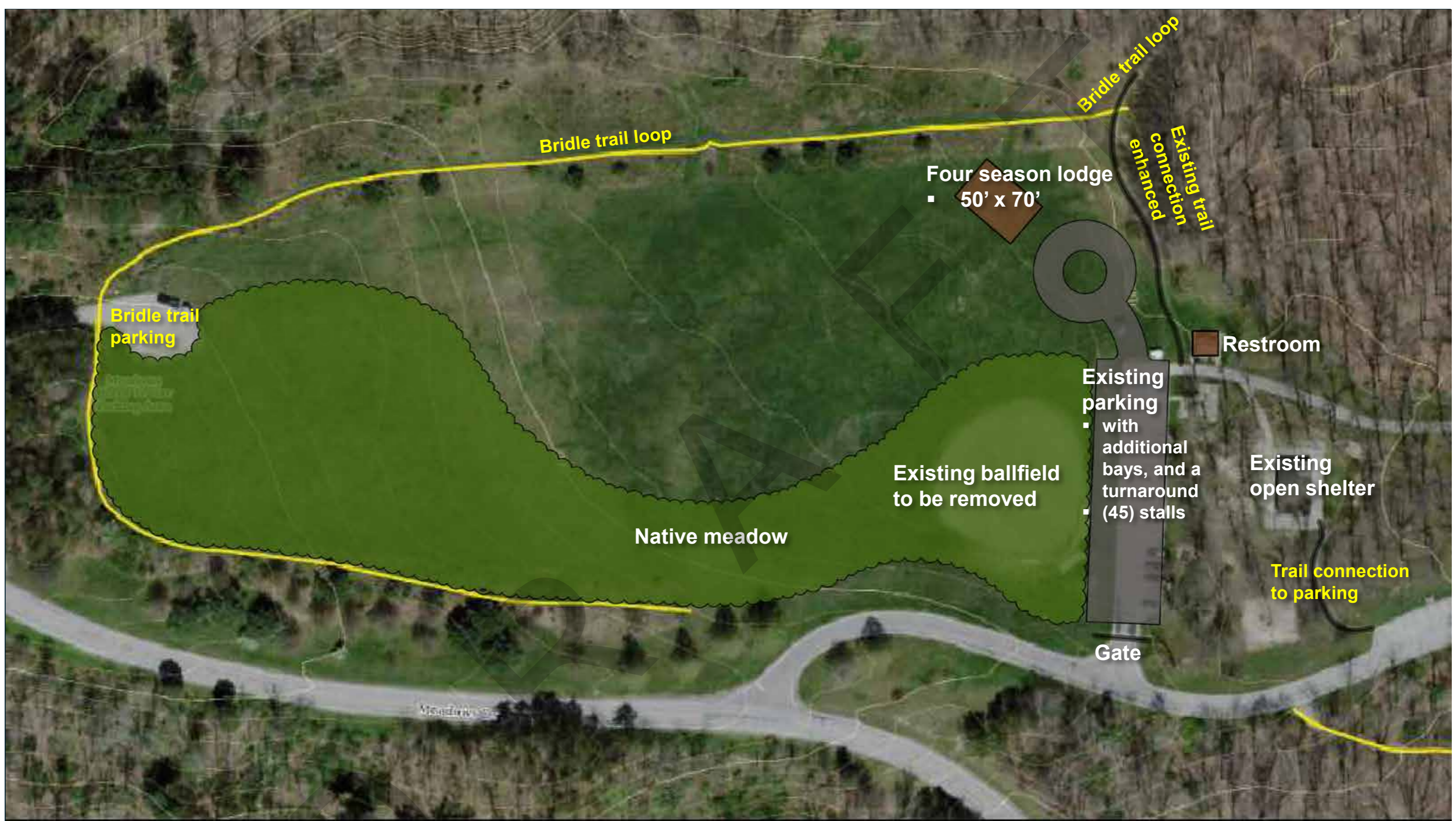


# Stuhr Woods Picnic Area

DRAFT

Brecksville Reservation - 1" = 100'





# Proposed Meadows Picnic Area

DRAFT

