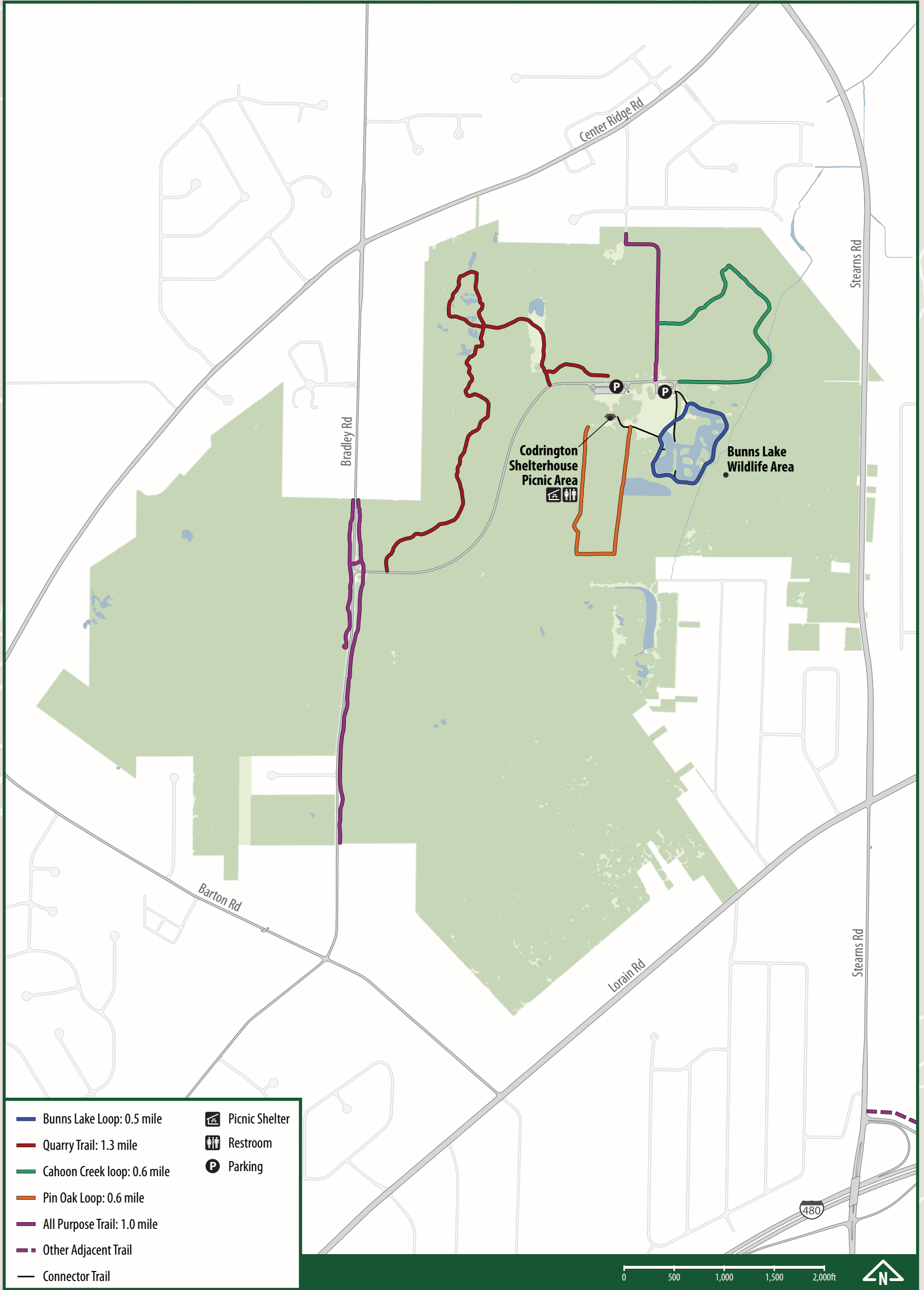


Bradley Woods Reservation



Bradley Woods Reservation:

Bradley Woods is located in North Olmsted and Westlake, and is on a massive formation of Berea sandstone. The stone is easily seen in the old quarry sites located in various areas of the reservation. The quarries were in operation over 50 years ago and produced sandstone for building sites. The reservation is filled with deep forests of red maples, sour gums, tulip trees & yellow birches. Bunns Lake, dedicated in 1986, was created to provide waterfowl habitat, as well as to provide fishing opportunities. The reservation also conserves wildlife habitat with undisturbed woodland and open areas.

Park Rules:

A complete set of Cleveland Metroparks rules and regulations can be found at clevelandmetroparks.com.

- Respect the fragile nature of the environment by staying on the trails.
- Enjoy the natural environment, but do not disturb, destroy, deface, injure, or remove any part of the Park District including plants, animals, rocks, buildings, signs, equipment or property.
- Put litter and recyclables in appropriate collection containers even if it's not your own.
- Cats and dogs must be on a leash not more than 8-feet long and are the only pets permitted in the Park District. Clean up after your pet.
- Keep to the right, pass on the left. Signal with bell or voice when passing.
- Bicycles permitted on roadways and designated trails.
- Reservation hours 6 a.m. - 11 p.m.
- Feeding wildlife is prohibited (505.04).
- Fishing is permitted with an Ohio fishing license, except in posted areas.
- The use of alcohol and drugs is not permitted.

Trail Etiquette:

- Control your speed and maintain a safe distance.
- Stay out of ski tracks when walking.
- Faster trail users yield to slower trail users.



Bunns Lake Wildlife Area



Pin Oak Loop

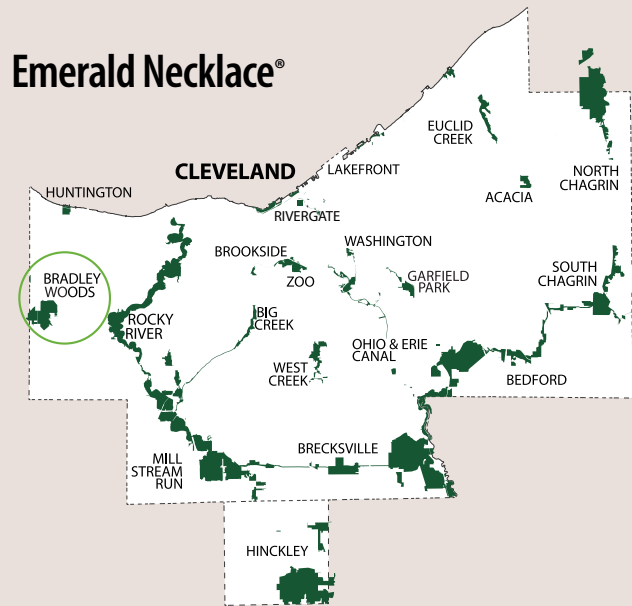


Codrington Shelterhouse Picnic Area



Quarry Trail

Emerald Necklace®



**Cleveland Metroparks Police
Emergency Number:
440-333-4911**

Cleveland Metroparks Administrative Offices
4101 Fulton Parkway | Cleveland, Ohio 44144-1923
216-635-3200

Outdoor Recreation
216-341-1704



clevelandmetroparks.com



©Registered trademarks of Cleveland Metroparks.

Bradley Woods Reservation Trails Guide

**TIME TO
EXPLORE**
Cleveland Metroparks