



Cleveland Metroparks®

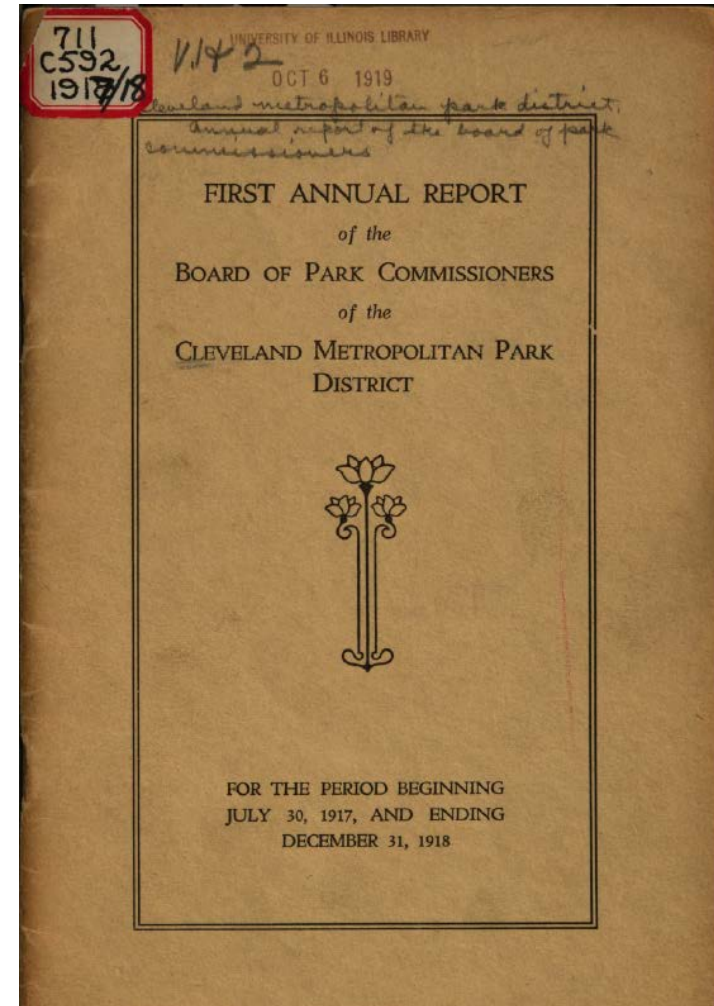
FIND YOUR PATH

Park Access
Board of Park Commissioners Meeting
September 16, 2021

Founding Mission

To provide these rural parks and open spaces for the people of the great City of Cleveland and its surrounding communities, as well as to conserve and preserve the valleys in the district, already beautified by nature, clearly appeared to be the reason for the creation of the Cleveland Metropolitan Park District under the law.

At Cleveland Metroparks core:
Regional park system created under Ohio Revised Code Chapter 1545
Conservation – Recreation – Education
We work to connect people and communities across Northeast Ohio





Cuyahoga County Road Map

Presented with the compliments of
W. A. STINCHCOMB
 COUNTY SURVEYOR
 Candidate for Re-Election

1920

THE EMERALD NECKLACE



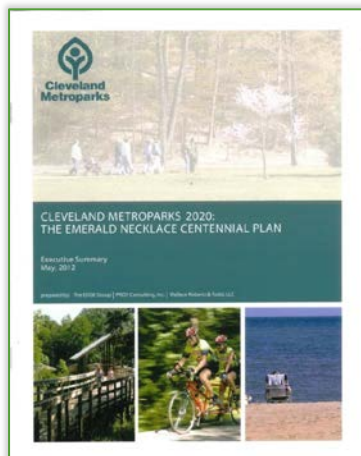
PAVED ROAD

COUNTY BOULEVARD

A To LORAIN	E To LODI	K To HUDSON	P To BAINBRIDGE - W. FARMINGTON
B To MILAN	F To MEDINA	L To AKRON	Q To BURTON
- NORWALK	- LODI	M To HUDSON	- MIDDLEFIELD
- SANDUSKY	- WEST SALEM	- AKRON	- WARREN
- TOLEDO	- ASHLAND	- MANSFIELD	- NILES
- DETROIT	- MANSFIELD	- REVENNA	- YOUNGSTOWN
C To ELYRIA	G To WADSWORTH	N To TWINSBURG	R To BURTON
- MT EATON	- MT EATON	- HUDSON	S To BURTON
- MILLERSBURG	- MILLERSBURG	- STONTS CORNERS	- CUYAHOGA FALLS
I To MASSILLON	- SILVER LAKE	- AKRON	T To CHARDON
- PLYMOUTH	- WOOSTER	- WOOSTER	U To BUFFALO
J To AKRON	- MASSILLON	- MASSILLON	O To GARRETTSVILLE
- COLUMBUS	- WOOSTER	- WOOSTER	- NEWTON FALLS
			- WARREN
			V To WILLOUSHBY

Strategic Directions

Cleveland Metroparks 2020: The Emerald Necklace Centennial Plan



Seven Key Directions

Green Infrastructure: Provide and promote the environmental, economic, and community health benefits of green infrastructure.

Scale: Deliberately address the interaction with the surrounding community and the Northeast Ohio region.

Cleveland and Inner Ring Suburbs: Strengthen Cleveland Metroparks role in the City of Cleveland and the inner ring suburbs.

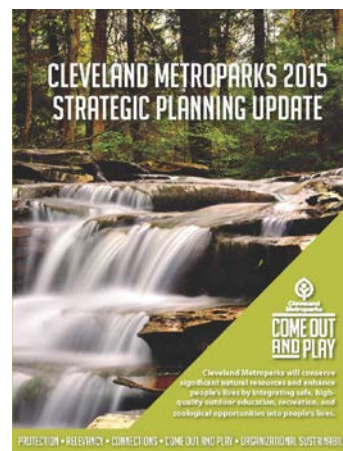
Outdoor Recreation: Expand natural resource-based outdoor education. Support community health and wellness, connect people to nature, and contribute to Northeast Ohio's attractiveness.

Regional Greenway System: Fill gaps within the Emerald Necklace, link to adjacent systems, and provide open space and recreational resources to underserved areas.

Lakefront: Improve and manage Cleveland Lakefront State Parks and Wendy Park. Address sustainable funding, security, etc.

Financial Sustainability: Establish a sustainable business/funding plan to support Cleveland Metroparks capital, operations, and maintenance needs.

2015 Strategic Planning Update



Five Strategic Goals

Protection: Implement natural resource and green infrastructure practices to create and manage urban park spaces so they are more resilient to ecological change and disturbance as part of the surrounding and regional community

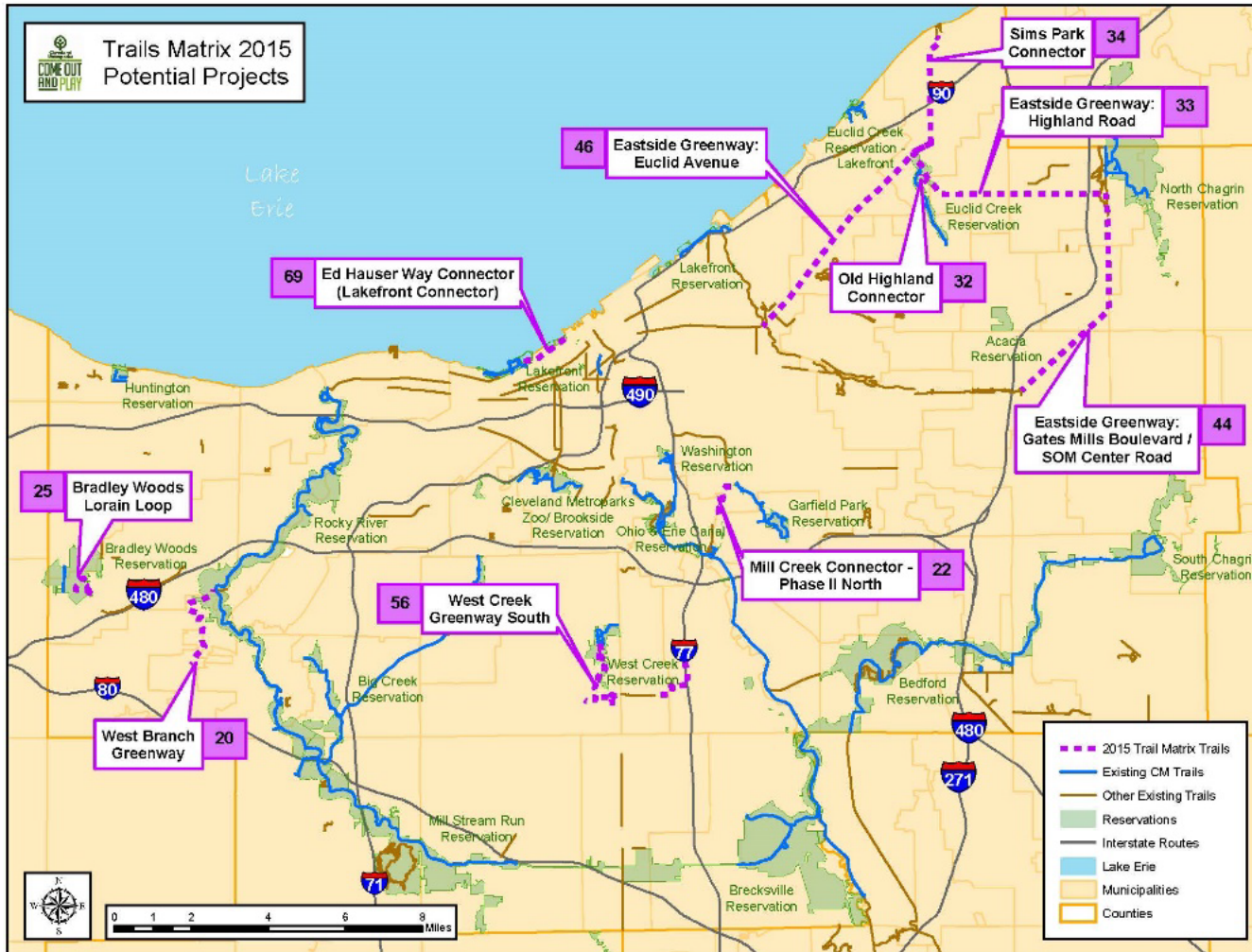
Connections: Advance connections and trail systems that complete the Emerald Necklace and, in partnership with other agencies and communities, connect with local, state, and regional trail networks, communities, and places of interest.

Come Out and Play: Expand and strengthen outdoor experiences and recreation opportunities consistent with the organization's mission and keep pace with market trends to contribute to the region's attractiveness as a place to live, work, and play.

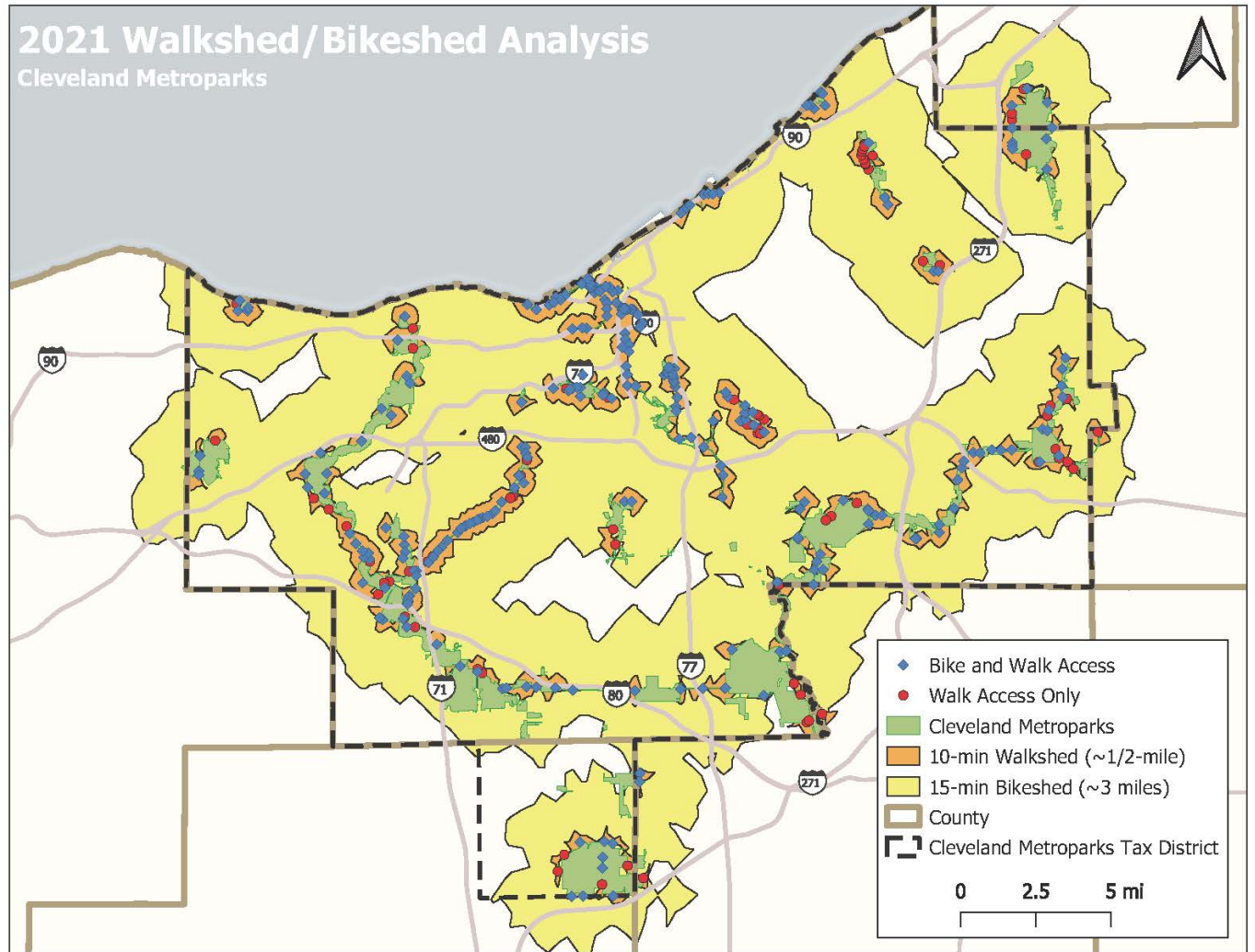
Relevancy: Strengthen the relevancy of the Emerald Necklace and Cleveland Metroparks Zoo as the park system enters its second century. Affirm the Park District's role and identity in response to changes in demographics and economics and continue to emphasize conservation education. Support the resurgence of the City of Cleveland and the inner ring suburbs.

Organizational Sustainability: Continue sustainable business practices to support Cleveland Metroparks capital, operations, and maintenance needs over the next ten-year levy cycle and beyond.

Planning Tools



Planning Tools



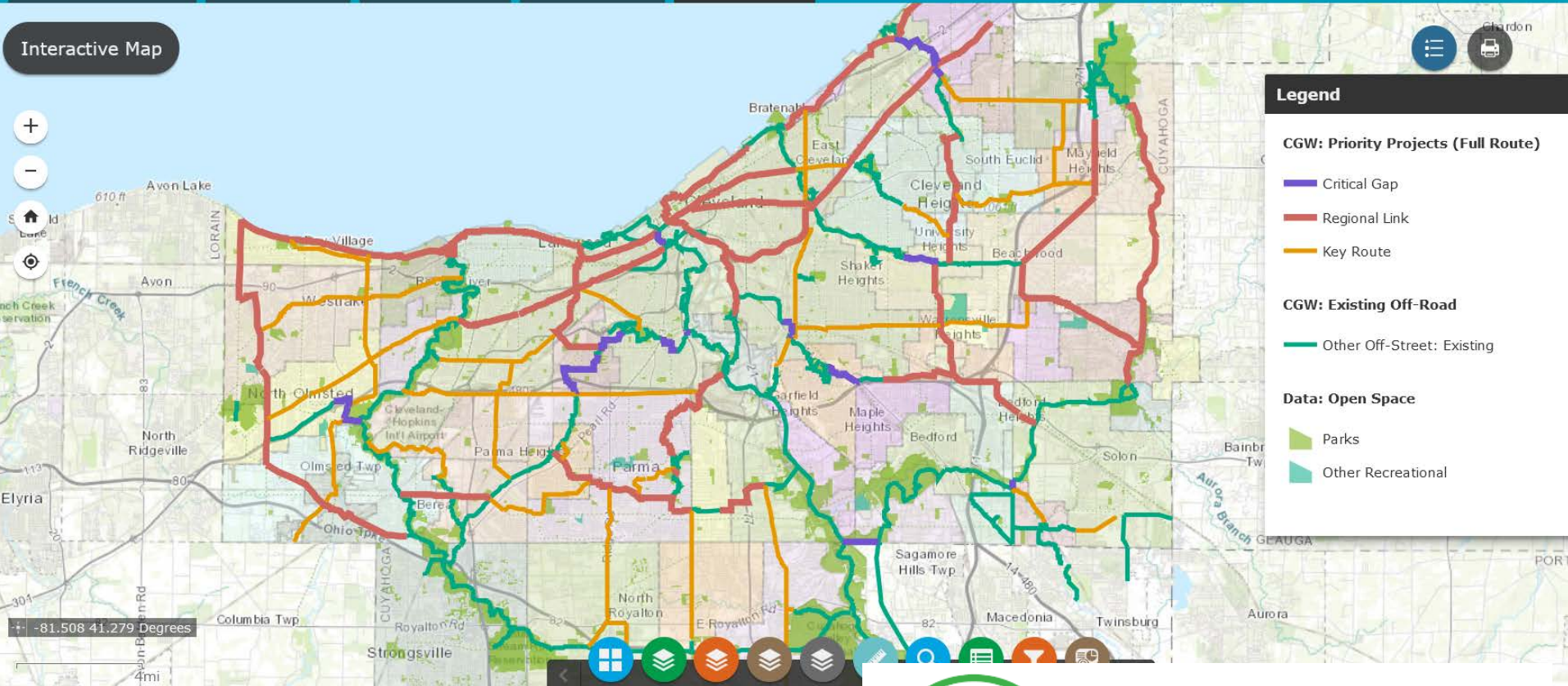
Regional Trail Planning

CUYAHOGA GREENWAYS: Framework Plan

Cuyahoga Greenways Project Home 

- Greenway Framework
- Goals & Process
- Route Evaluation
- Implementation
- Interactive Map

Interactive Map



Environmental Justice Areas

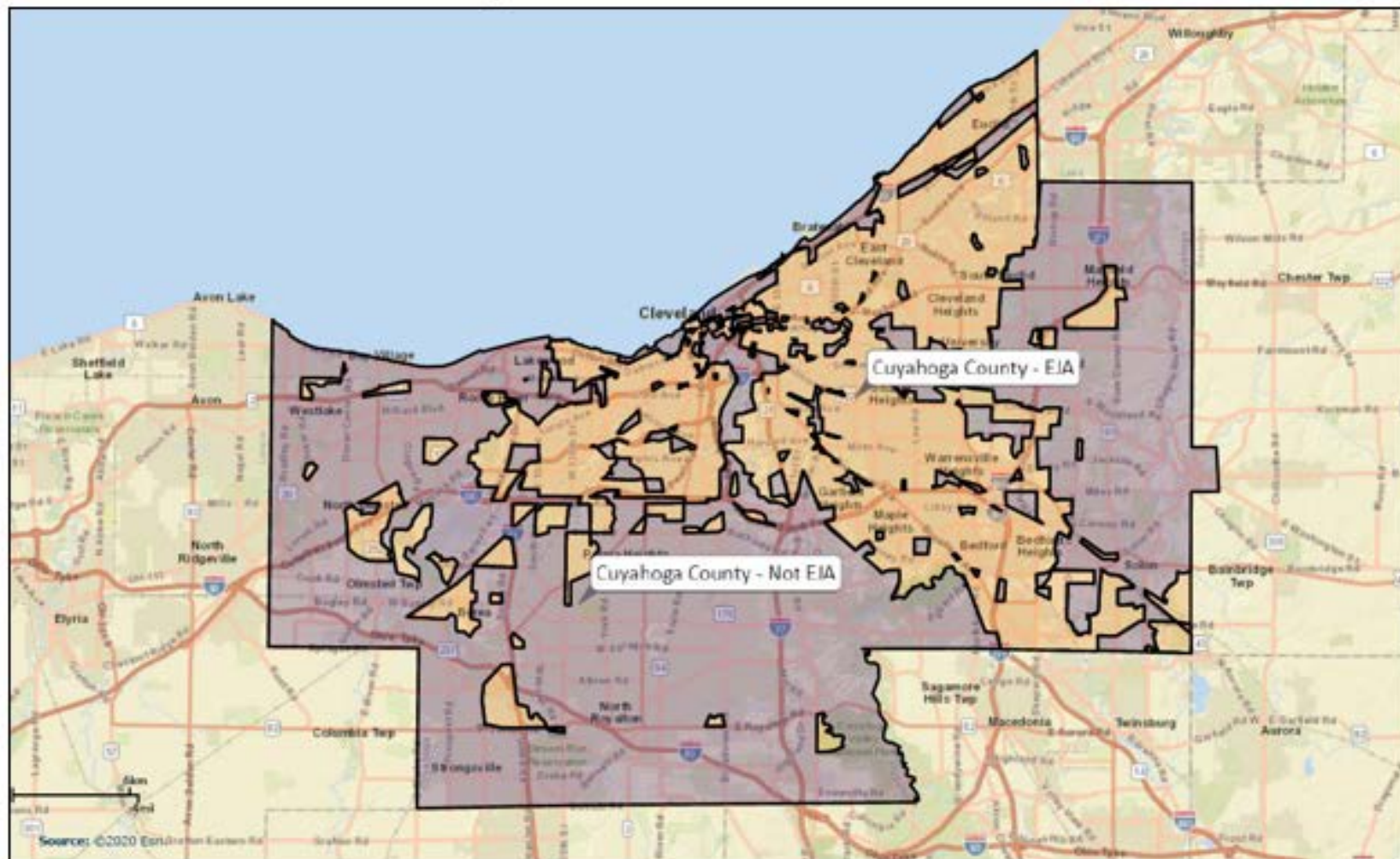
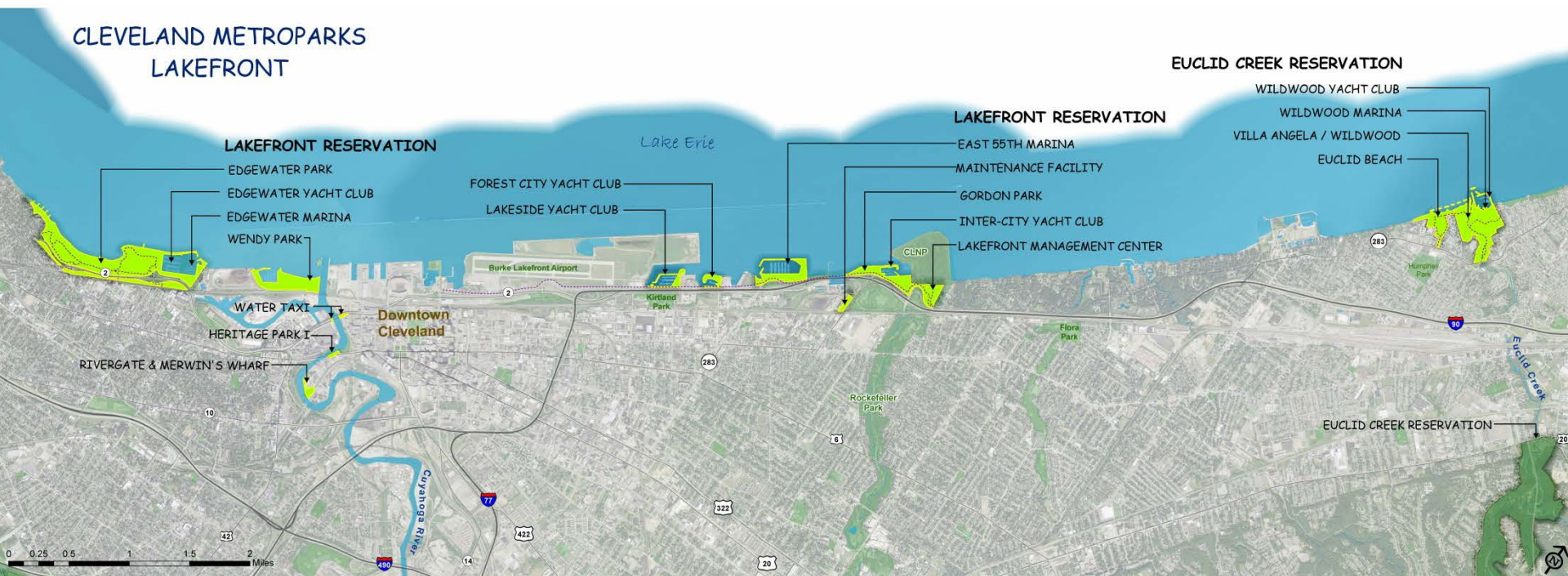


Figure 1: EJA and Non-EJA Boundaries

New or Expanded Parks



New or Expanded Parks

CLEVELAND METROPARKS
LAKEFRONT



New or Expanded Parks

CLEVELAND METROPARKS
LAKEFRONT



New or Expanded Parks



Brighton Park



New or Expanded Parks



New or Expanded Parks



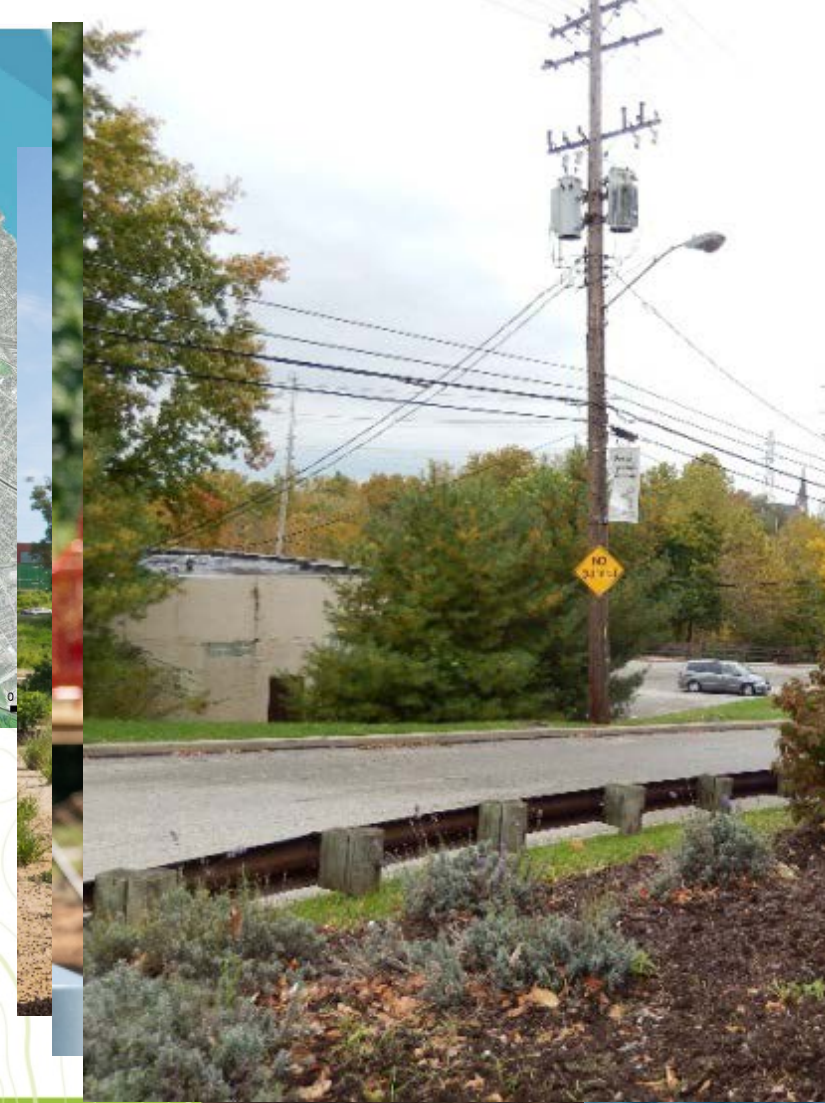
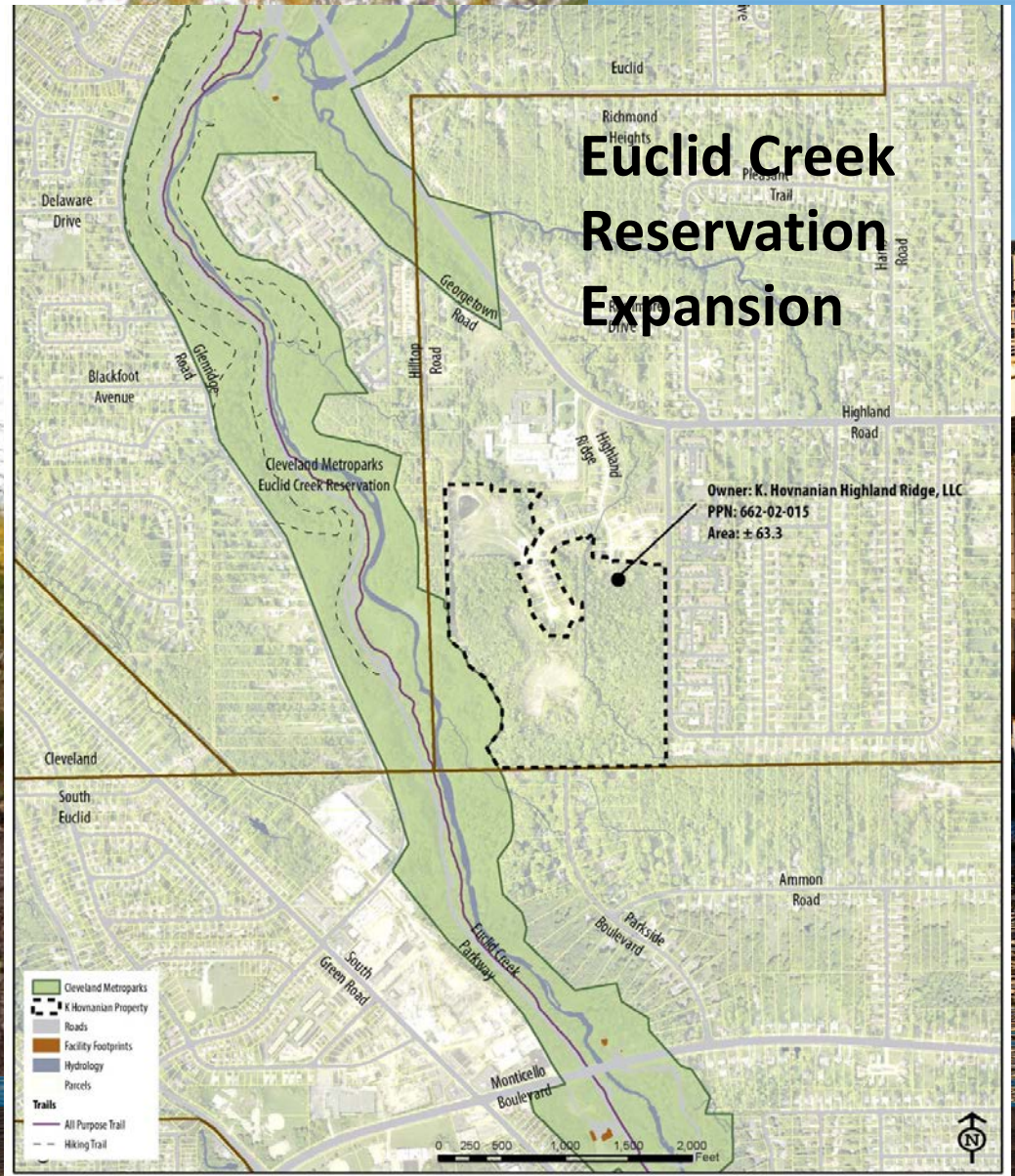
New or Expanded Parks



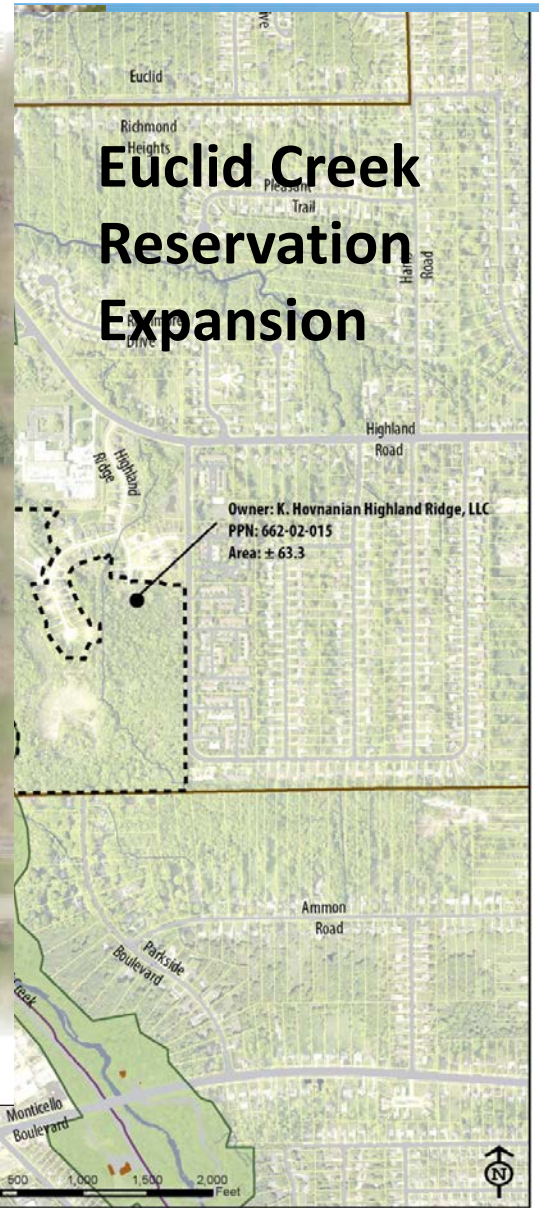
New or Expanded Parks



New or Expanded Parks



New or Expanded Parks



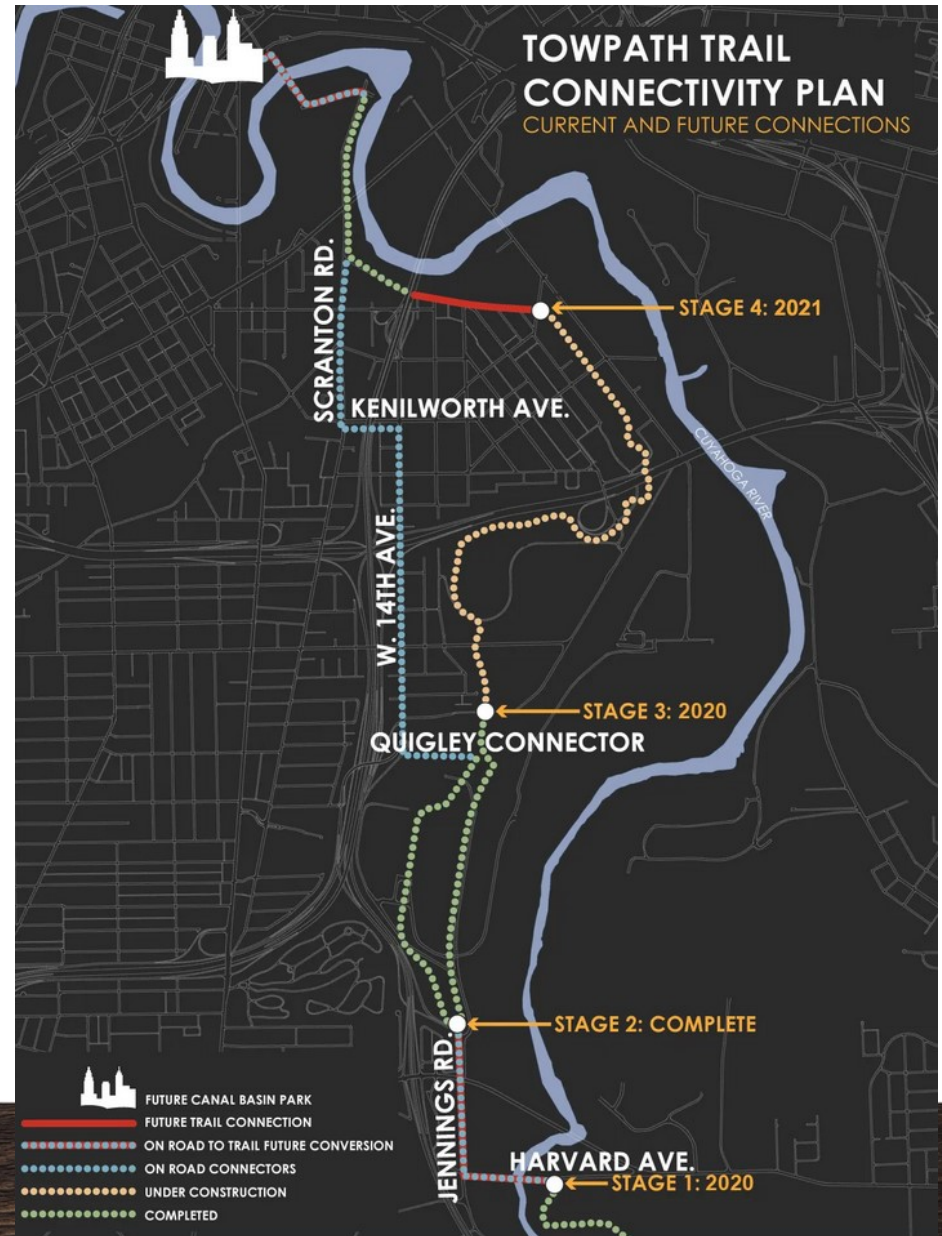
Master Plan

Dunham Park

New or Expanded Parks



New Trails or Connections



New Trails or Connections



TOWPATH TRAIL CONNECTIVITY PLAN CURRENT AND FUTURE CONNECTIONS



New Trails or Connections



New Trails or Connections



New Trails or Connections

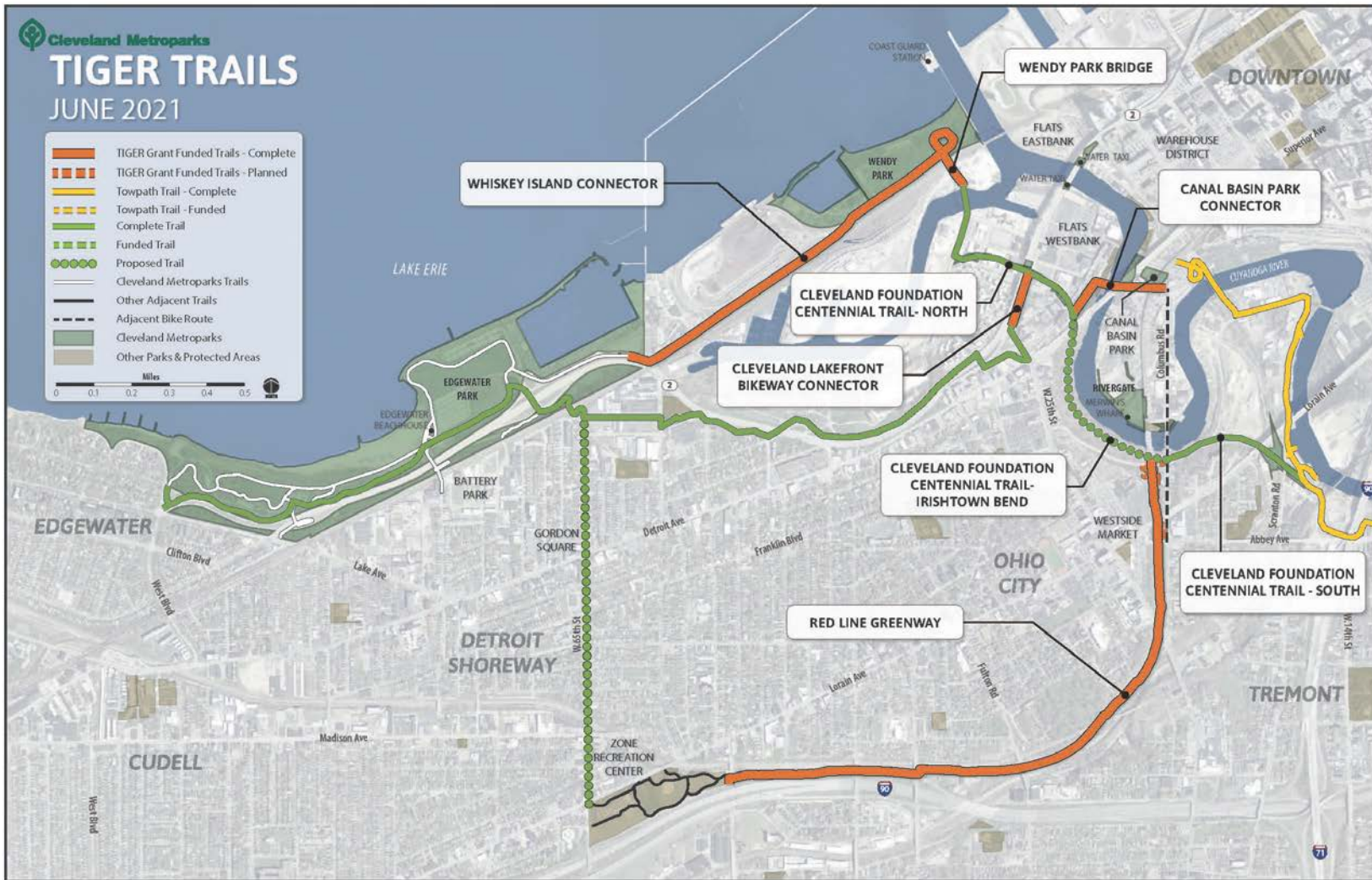


**Cleveland Foundation
Centennial Lake Link Trail**

New Trails or Connections



New Trails or Connections



New Trails or Connections



Walkshed/Bikeshed Update

2021 Update

Tax District Population: 1,261,100

- Walkshed: 150,664 (11.9%)
- Bikeshed: 1,034,030 (82.0%)

Tax District EJ Population: 730,721

- Walkshed: 104,871 (14.4%)
- Bikeshed: 590,240 (80.8%)

When 2021 access is compared to 2015 access this represents an increase of:

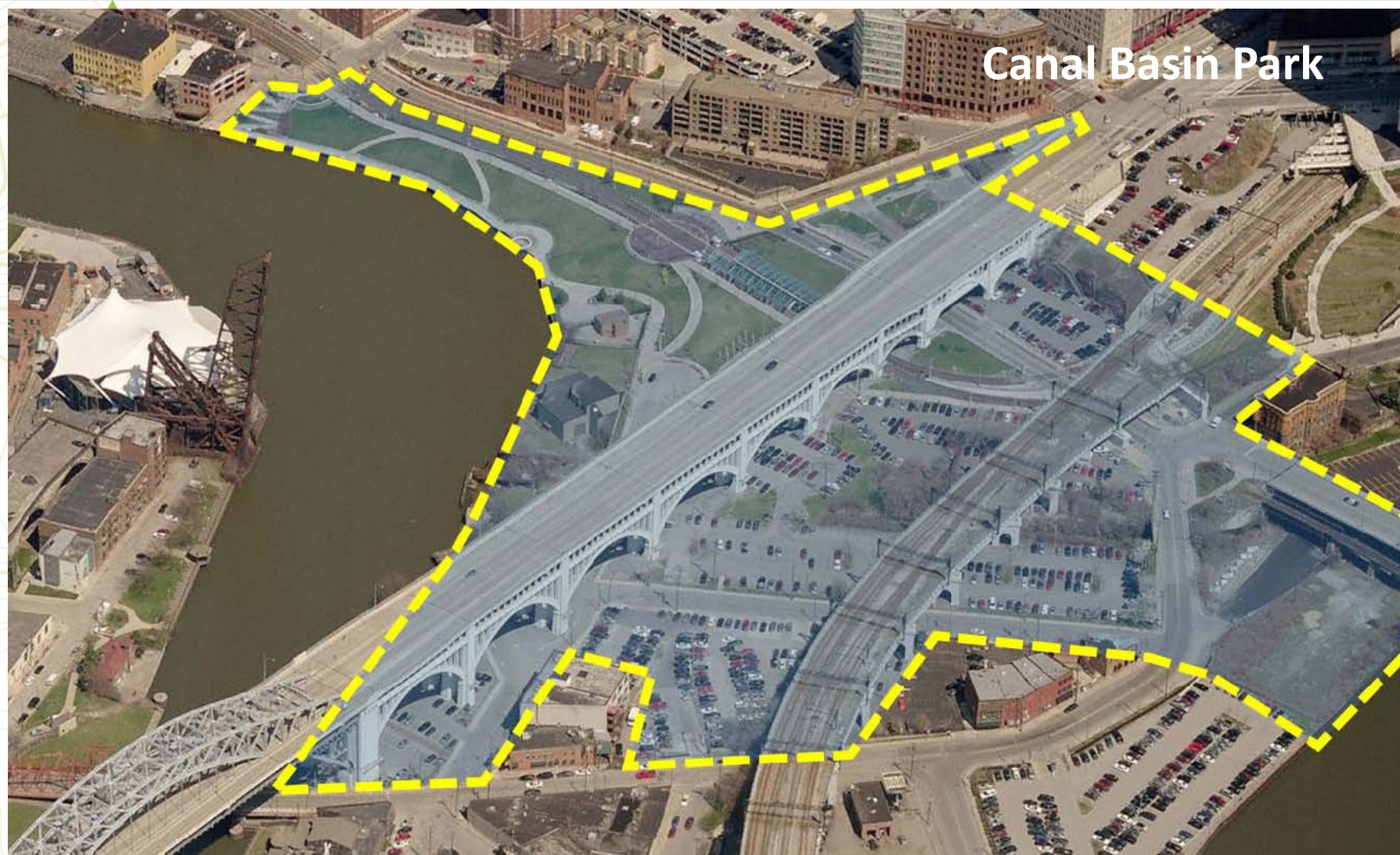
Tax District:

- Walkshed: 15.8%
- Bikeshed: 0.7%

Tax District EJ Population:

- Walkshed: 24.1%
- Bikeshed: 0.1%

Future Parks, Expansions, or Partnerships

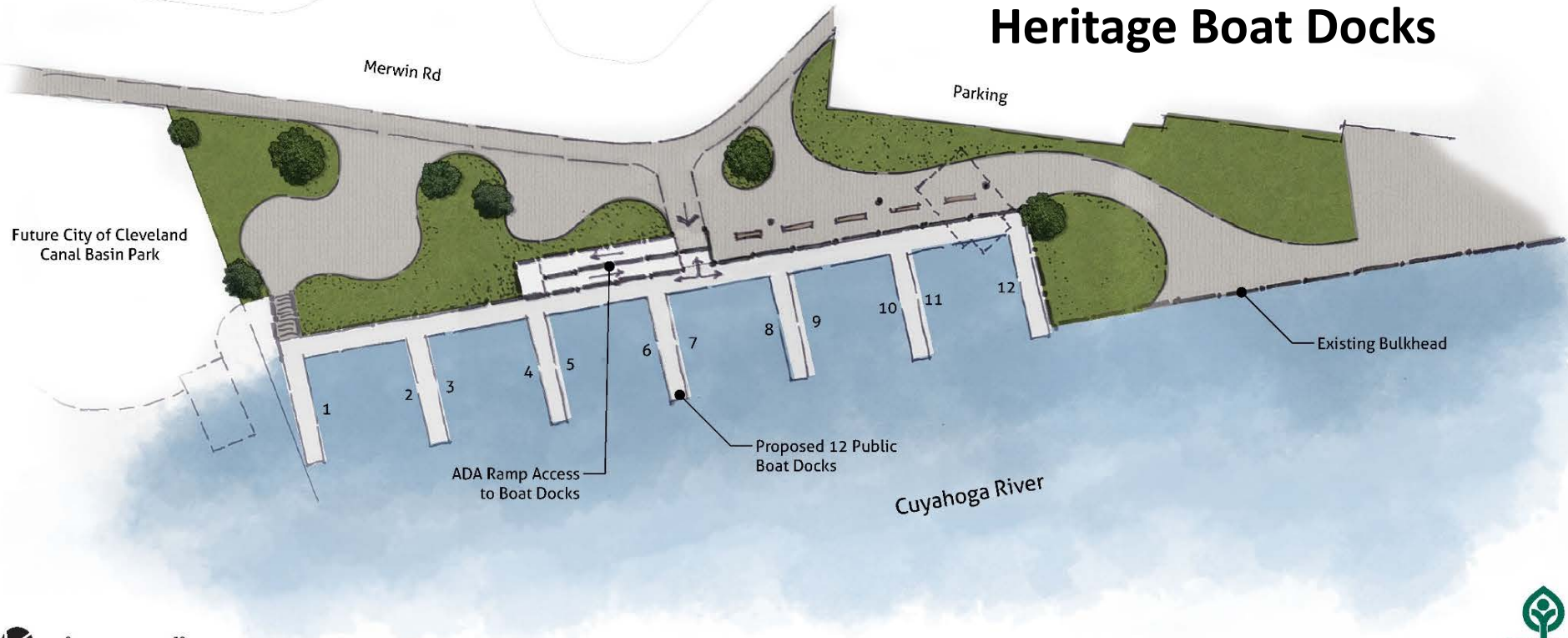


Canal Basin Park

Future Parks, Expansions, or Partnerships



Canal Basin Park



Heritage Boat Docks

Future City of Cleveland Canal Basin Park

Merwin Rd

Parking

Existing Bulkhead

ADA Ramp Access to Boat Docks

Proposed 12 Public Boat Docks

Cuyahoga River



Future Parks, Expansions, or Partnerships



Canal Basin Park



VISION FOR THE VALLEY

Future City of
Canal Basin



0 30
Feet

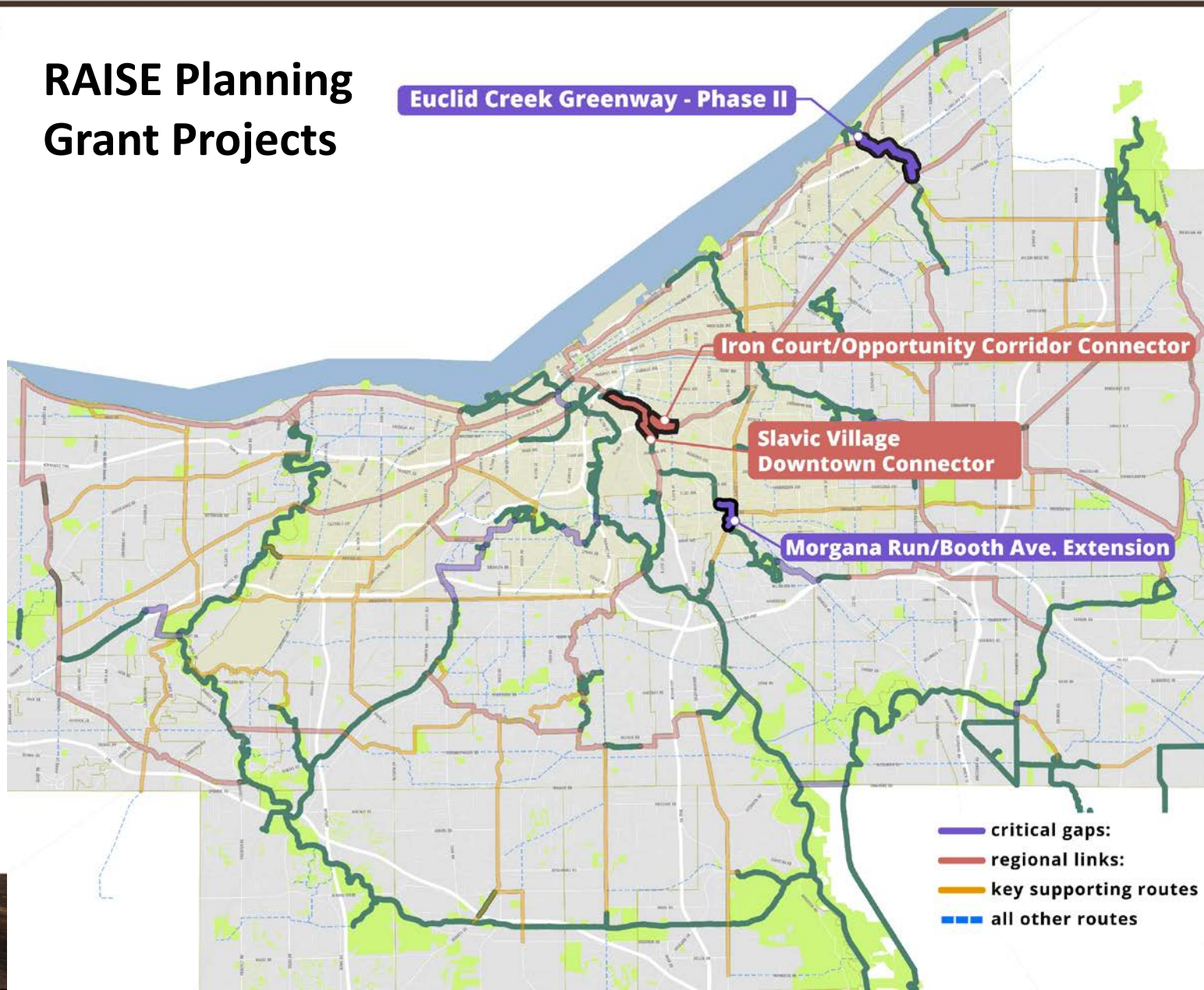


Future Parks, Expansions, or Partnerships



Future Trails or Partnerships

RAISE Planning Grant Projects



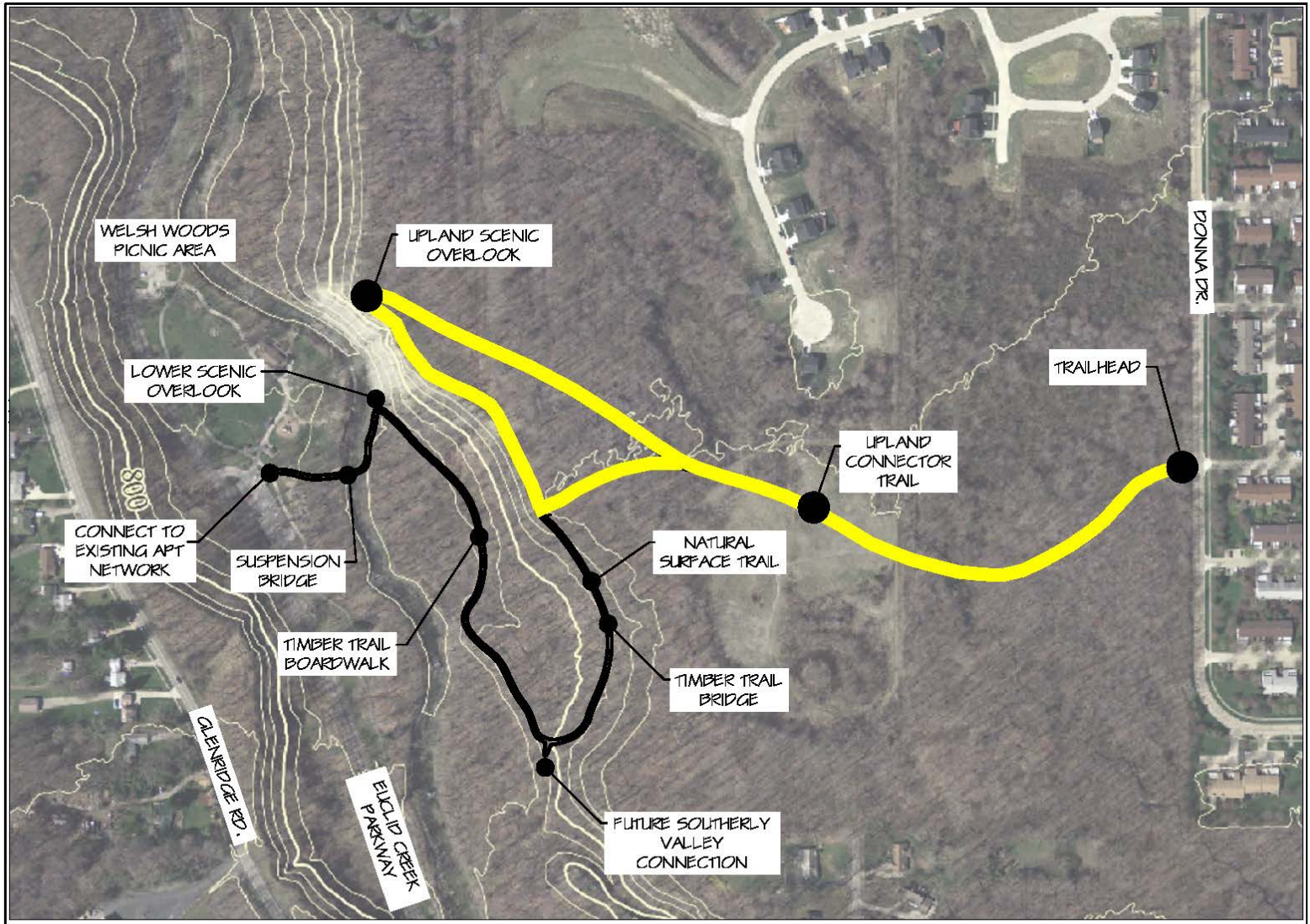
Future Trails or Partnerships



EUCLID CREEK CONNECTOR - PHASES 1,2 & 3



Future Trails or Partnerships



- Phase 1
- Phase 2
- Phase 3
- All purpose
- Hiking

CLEVELAND METROPARKS

EUCLID CREEK EASTERN CONNECTOR TRAIL
EUCLID CREEK RESERVATION



Future Trails or Partnerships

Cleveland Foundation Centennial Lake Link Trail – Irishtown Bend



EUCLID CREEK



CLEVELAND METROPARKS

EUCLID CREEK RESERVATION

SCALE IN FEET
1"=30'



CLEVELAND METR



Future Trails or Partnerships

Cleveland Foundation Centennial Lake Link Trail – Irishtown Bend



CUYAHOGA
greenways

