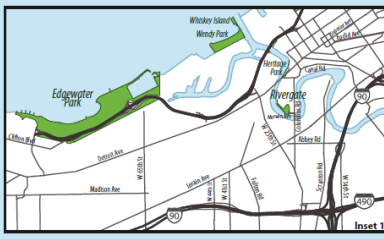


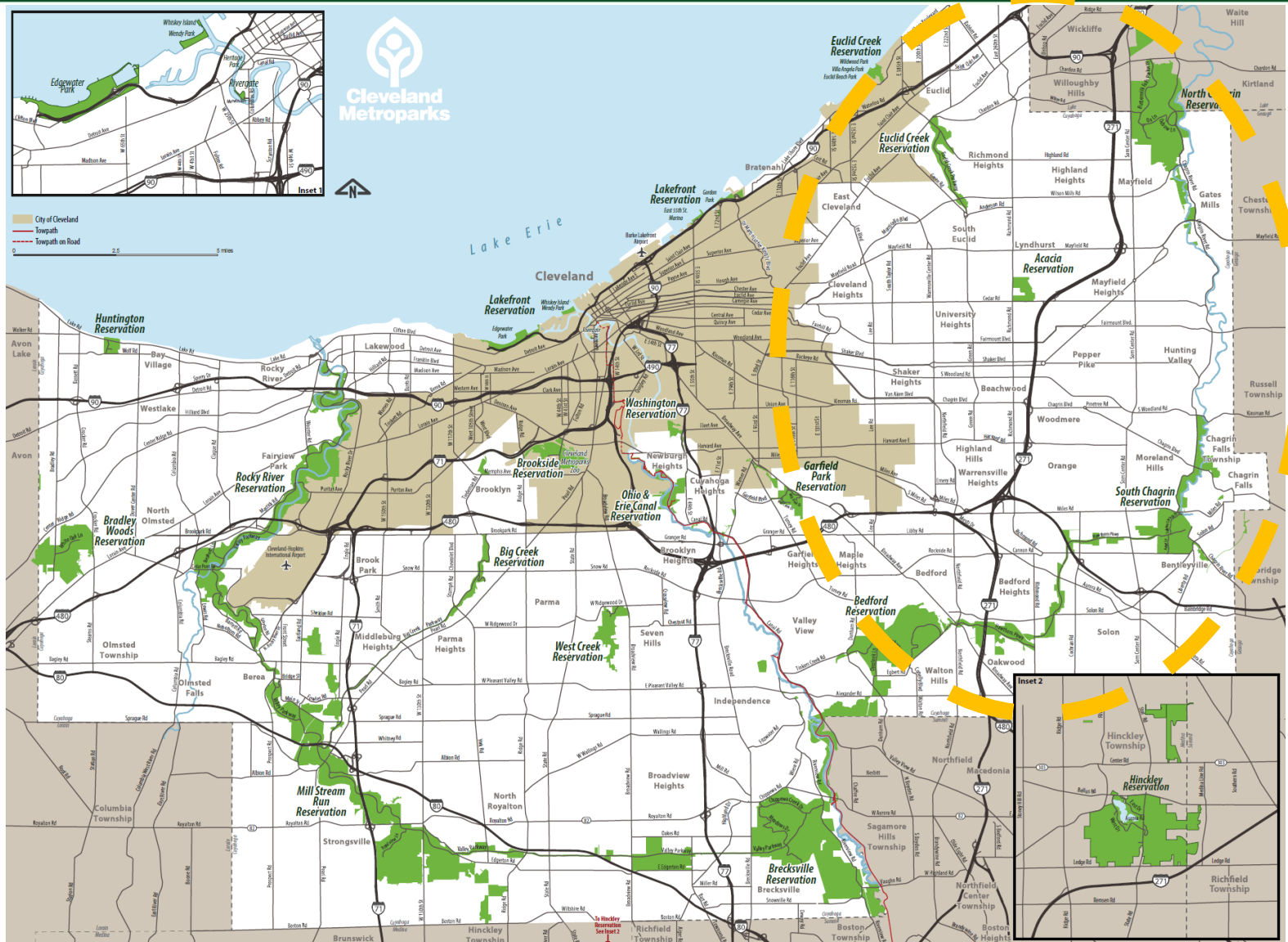


Cleveland Metroparks

COME OUT AND PLAY



Cleveland Metroparks



2015 RESERVATION PLAN UPDATES

Acacia, Euclid Creek, North Chagrin, South Chagrin

RESERVATION PLAN UPDATE PROCESS

PROTECTION



RELEVANCY



CONNECTIONS



COME OUT AND PLAY

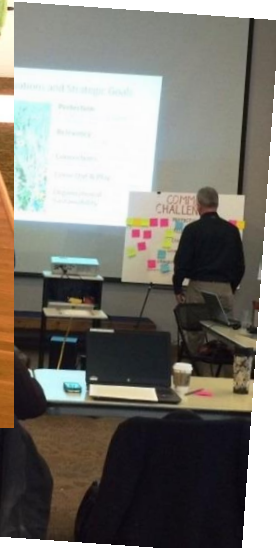


ORGANIZATIONAL SUSTAINABILITY



EUCLID CREEK

STRENGTHS	WEAKN
WATERSHED PLAN - LOWER EUCL. CREEK	≠ BRIGAN
UNIQUE USER GROUP HEAVILY USED	CROWDED -
LAKE ERIE ACCESS	FLASH FLOOD
LONG HISTORY / QUARRY, EB, VA	LIMITED ACCE
LONG DISTANCE <u>APT</u> / LOOP	(Mompellu)
BEST WILDFLOWER HIKES (± DEER)	CAN'T GET ACR
" GEOLOGY	Go
COMMITTER EXPERIENCE + DRIVE-THROUGH PARK → REFE	- LARGE DEV +
BIRDING OPP. / OXBOW	- ? SOME NA
	LAKES EFF
CONNECTING DOTS RE. CREEK / LAKE	
FOREST @ VA - ENHANCE	
OPPORTUNITIES	THRE
ONE PKG @ BBRAL, ACCESS TO UPPER	LAND LOCKED
COULD EXPAND	- UNDERMIN
OPP. TO CONNECT TO MT. BALDY	WAYS @ CA
ON STREET PKG @ BACK	- HISTORIC. /
& AWESOME PLACE / SAFETY CONCERN	
CONFLUENCE	GREEN RIDGE R
E. BRANCH TO RICHMOND?	SWIMPS +
ABANDONED HIGHLAND RD. - GEORGETOWN - + SOME	CLEV. WATER
CROSS OVER - CONNECTION	
CONVERT BOTTOMLAND FIELDS	? OLD
FISHING (WILDWOOD)	HURR
	@ VA



Richmond Road Corridor

- Address treatment of park frontage into the park.
- Develop connections with Legacy and eventually Euclid Creek Reservoir
- Develop park entry drive and trail signal.
- Protect existing elm near proposed
- Remove existing house when sustained

Acacia Picnic Area

- Create Richmond Road entry drive treatments such as shelter or play features
- Provide program space and gathering
- Connect to internal trails.

Maintenance Area

- Consolidate yard space and identify facilities.
- Develop access to maintenance area
- Remove and sort former stockpile.
- Consider relocation of 50x60 green

Southwest Tier

- Develop loop trail as gravel or natural surface
- Develop program area (circular boulder seating)
- Add signature bike/pedestrian bridge over Euclid
- Improve access and showcase restoration work

Legend

- Program Circle
- Play Feature
- All Purpose Trail
- Proposed Trails
- Access to Three Villages Only
- Decommissioned Trails



Restrooms

- Address restrooms at Euclid Creek Reservation and to regional side Greenway process.
- Improve identified routes.
- Improve junction with Master Plan improvements

Trail

- Provide neighborhood to park via trail spur when needed
- Improve experiences - potentially add sections of wet areas and viewing areas near

Water

- Enlarge the existing pond and tier wetland fringe with rocks. Allow fishing.
- All Purpose Trail loop and develop circular boulder seating) in vicinity.

Picnic Area

- Add barn for year-round restrooms and move the existing pool house.
- Request to Cleveland Metroparks, and gathering area, seating areas, and a shaded by lawn.
- Facility while keeping the general public areas. Pull east-west path away from

Road to include more native

Richmond Road Corridor

- Address treatment of park frontage - fence removal, screening, selected views into the park.
- Develop connections with Legacy Village, local schools, adjacent neighborhoods, and eventually Euclid Creek Reservation as opportunities allow.
- Develop park entry drive and trail crossing. Align with the Cleveland Clinic traffic signal.
- Protect existing elm near proposed entry.
- Remove existing house when sustaining structure becomes cost prohibitive.

Acacia Picnic Area

- Create Richmond Road entry drive and parking. Provide future improvements such as shelter or play feature.
- Provide program space and gathering areas.
- Connect to internal trails.

Maintenance Area

- Consolidate yard space and identify any shared use opportunities for facilities.
- Develop access to maintenance area from new entry road.
- Remove and sort former stockpile. Restore vegetation.
- Consider relocation of 50x60 greenhouse to within maintenance yard.

Southwest Tier

- Develop loop trail as gravel or natural surface through restored landscape with asphalt on steeper slopes.
- Develop program area (circular boulder seating) on west side of Euclid Creek.
- Add signature bike/pedestrian bridge over Euclid Creek (at a higher elevation than the current bridge) to improve access and showcase restoration work and/or overlook on bluff.

Reservation-wide Considerations

- Improve accessibility by creating links to Euclid Creek Reservation and to regional trails such as the routes identified in the Eastside Greenway process.
- Improve trail system by removing excess cart paths and improving identified routes.
- Implement Ecological Restoration Plan in conjunction with Master Plan improvements and in context of deed restrictions.

Northern Tier

- Connect north neighborhood to park via trail spur when support exists.
- Improve trail experiences - potentially add sections of boardwalk across wet areas and viewing areas near wetlands.

Heron Pond

- Explore options to enlarge the existing pond and develop a perimeter wetland fringe with boardwalk/overlook. Allow fishing.
- Link to the main All Purpose Trail loop and develop program area (circular boulder seating) in vicinity.

Fairways to Forest Picnic Area

- Winterize and utilize the existing cart barn for year-round restrooms and as an interpretive education hub. Remove the existing pool house.
- Interpret the history of Acacia, the bequest to Cleveland Metroparks, and the restoration activities.
- Develop a thematic nature play gathering area, seating areas, and a covered shelter (4-6 tables) surrounded by lawn.
- Orient park guests to the banquet facility while keeping the general public areas separate from the private use areas. Pull east-west path away from building.

Cedar Road Corridor

- Address landscape treatment along Cedar Road to include more native species and mass plantings.
- Assess opportunities to regrade and highlight Cedar Road entrances. Reconfigure existing parking and improve bike/pedestrian access.

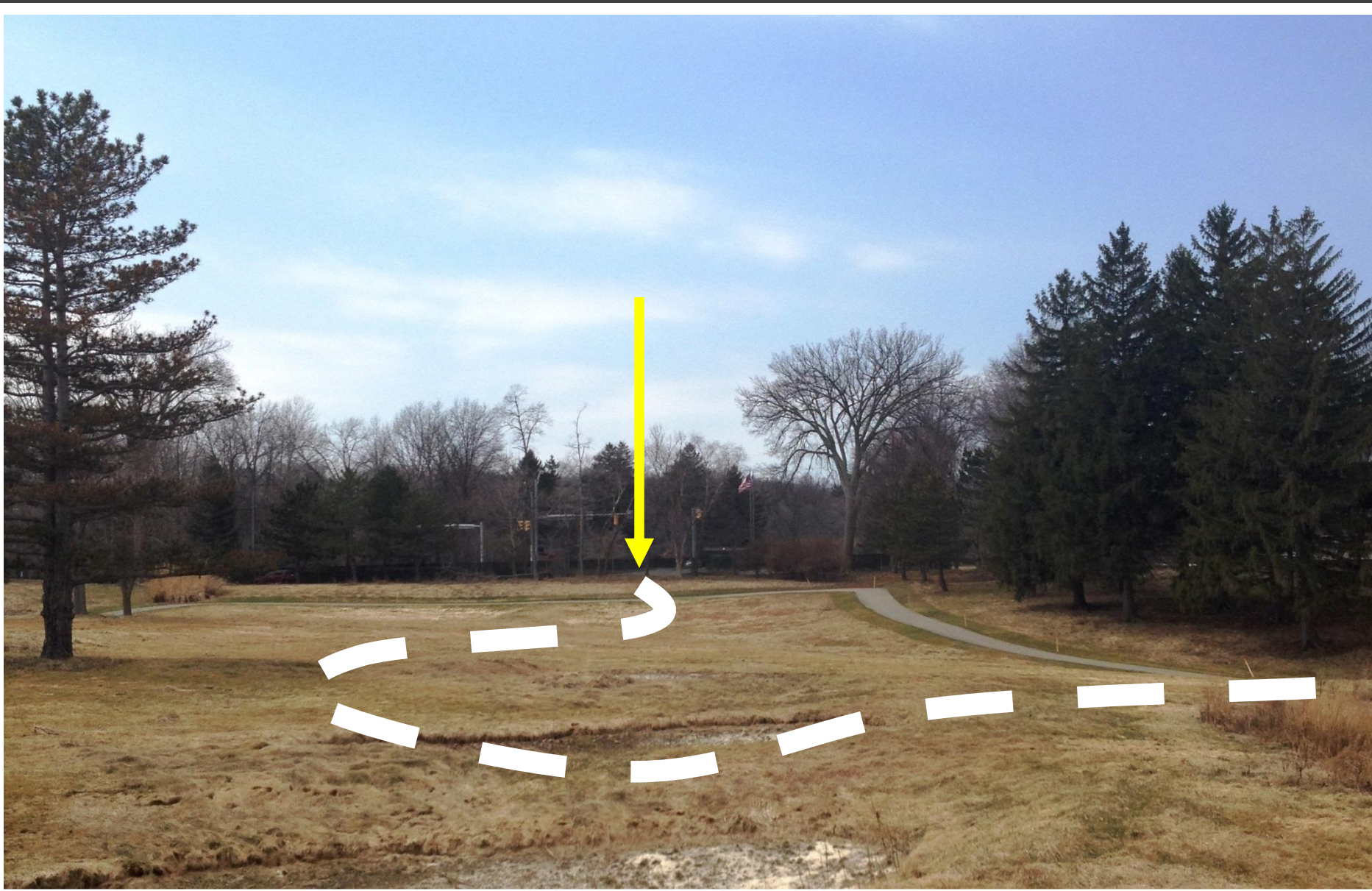
RTA Stations

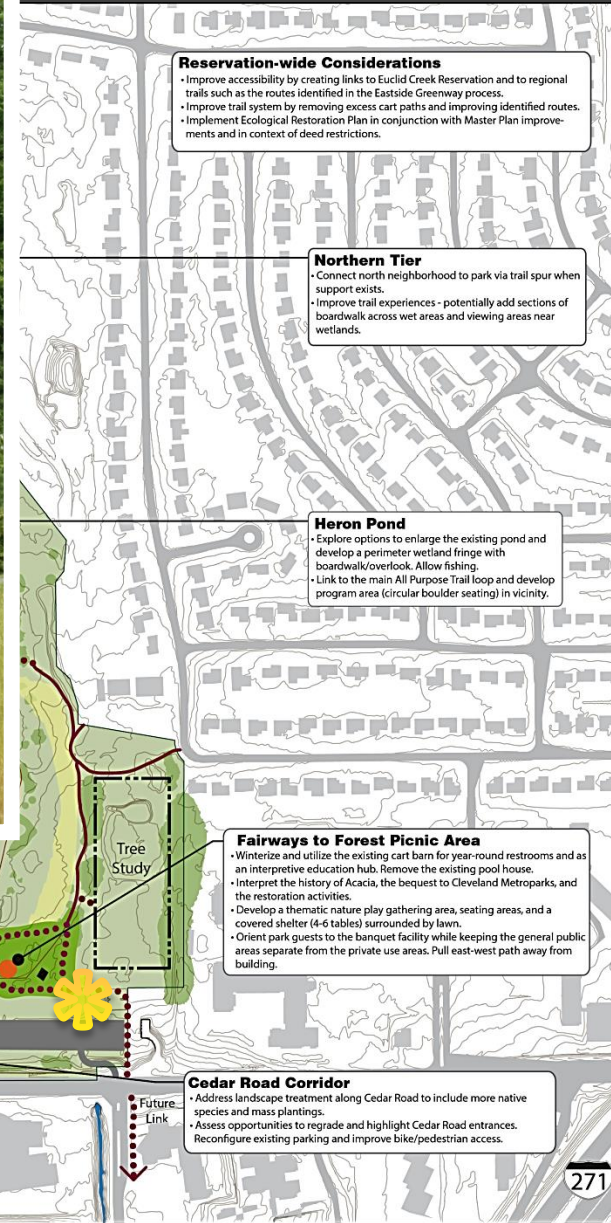
- Improve with park-like shelter orienting and inviting transit users to Acacia Reservation.

Sledding Area

- Reconfigure the existing sledding hill to improve safety and function.

	Program Circle		Proposed Boardwalk
	Play Feature		Proposed Meadow
	All Purpose Trail		Water
	Proposed Trails Access to Three Villages Only		Maintained as Lawn
	Decommissioned Trails		





S6

- Develop loop trail as gravel or natural surface through restored landscape with asphalt on steeper slopes.
- Develop program area (circular boulder seating) on west side of Euclid Creek.
- Add signature bike/pedestrian bridge over Euclid Creek (at a higher elevation than the current bridge) to improve access and showcase restoration work and/or overlook on bluff.

- Program Circle
- Play Feature
- All Purpose Trail
- Proposed Trails Access to Three Villages Only
- Decommissioned Trails
- Proposed Boardwalk
- Proposed Meadow
- Water
- Maintained as Lawn

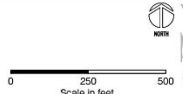


RTA Stations

- Improve with park-like shelter orienting and inviting transit users to Acacia Reservation.

Sledding Area

- Reconfigure the existing sledding hill to improve safety and function.



INITIAL PRIORITIES

- Ongoing restoration work
- Reservation-wide trail development and bridge over Euclid Creek
- Richmond Road Picnic Area
- Cedar Road small shelter
- Cedar Road parking and drive improvements



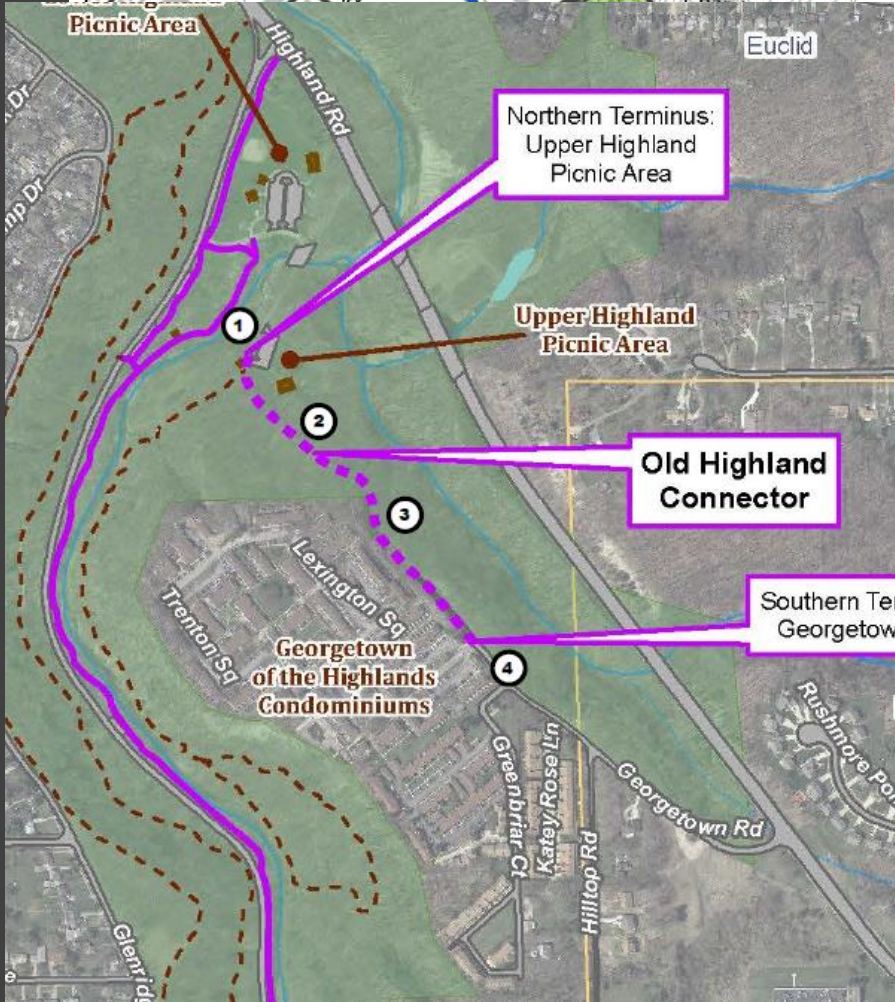
Lakefront Connector

- Work with partners to construct trail connection to lakefront portion of reservation.
- Support efforts to provide fish passage upstream from I-90 structure.

Reservation-wide Considerations

- Improve wayfinding along roadways and trails.
- Identify and implement strategic trail connections to

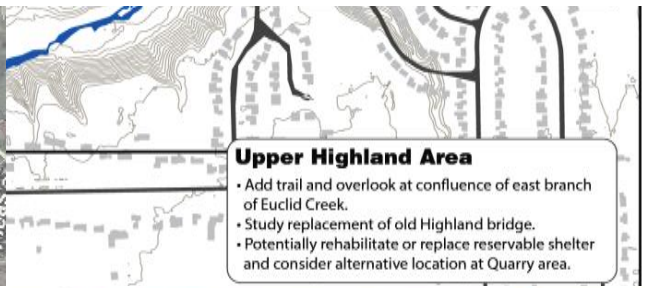
Looking uphill and south from the start of the trail near the Upper Highland Picnic Area



Northern Terminus:
Upper Highland Picnic Area

Old Highland Connector

Southern Terminus:
Georgetown Rd.



Upper Highland Area

- Add trail and overlook at confluence of east branch of Euclid Creek.
- Study replacement of old Highland bridge.
- Potentially rehabilitate or replace reservable shelter and consider alternative location at Quarry area.

Looking downhill and north toward the Upper Highland Picnic Area from the lower section of the old roadbed



- Supplement forest vegetation.
- Improve trail sustainability by stabilizing existing trail along roadway, defining trail on hillside, eliminating bootleg trails and addressing erosion.
- Identify stormwater and city water discharge issues and coordinate solution with City of Euclid and City of Cleveland. Implement engineered green infrastructure drainage tools to intercept water and reduce offsite impacts on park.

Lakefront Connector

- Work with partners to construct trail connection to lakefront portion of reservation.
- Support efforts to provide fish passage upstream from I-90 structure.

Reservation-wide Considerations

- Improve wayfinding along roadways and trails.
- Identify and implement strategic trail connections to regional trails and neighborhoods. Balance access with environmental sustainability.
- Improve condition of parking directly adjacent to Euclid Creek Parkway. Consider permeable paving. Continue to use shuttle for peak events.
- Identify and implement stormwater BMPs and other measures to protect park resources and manage against outside pressures.

Heritage Park Area

- Route trail along Highland Road and through site, crossing Euclid Avenue at school signal or Chardon Road as part of lakefront connector.
- Highland Road offers opportunities for signage denoting property as part of Cleveland Metroparks - option for recognition and 'branding' along roadway.
- Upgrade quality of meadow and continue to reduce lawn.

Mt. Baldy Area

- Evaluate restoration options

North Entry

- Add HAWK signal and signage at trail crossing.
- Consider reconfiguring to a 'T' intersection to slow vehicular traffic and provide a safer experience for bicyclists and pedestrians. Move park gates north to intersection.

Highland Area

- Add trail signage when Lakefront Connector is complete.
- Add fitness areas (example Trust for Public Land Fitness Zone) and relocate Helios to new west Kelly area. Provide adjacent play area.
- Add bike rental and repair station.
- Rehabilitate or replace Smokehouse Shelter due to condition. Evaluate location.

Creekside Area

- Study creek and address failure of historic creekside retaining walls.
- Relocate APT away from critical points at edge of creek.

Glenridge Area

- Partner with City of Euclid to jointly work towards community trail connection.
- Supplement forest vegetation.
- Improve trail sustainability by stabilizing existing trail along roadway, defining trail on hillside, eliminating bootleg trails and addressing erosion.
- Identify stormwater and city water discharge issues and coordinate solution with City of Euclid and City of Cleveland. Implement engineered green infrastructure drainage tools to intercept water and reduce offsite impacts on park.



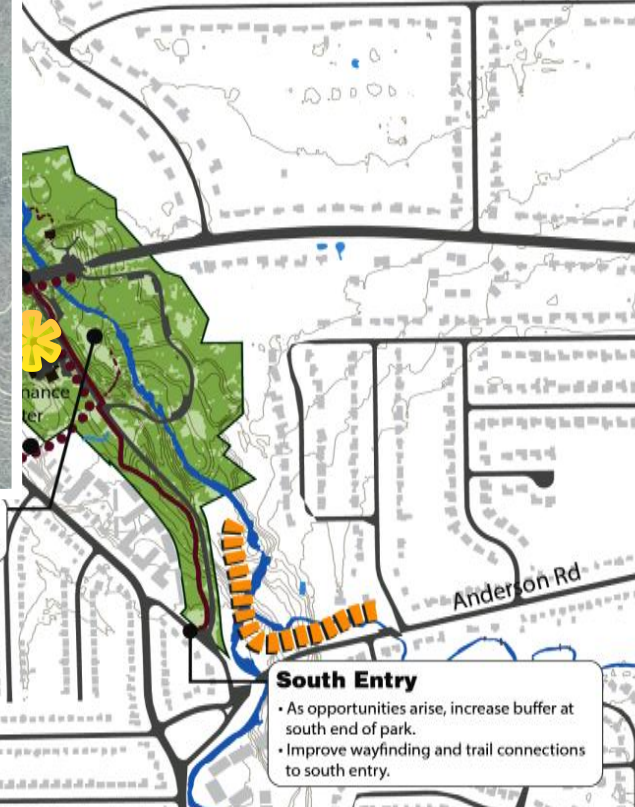
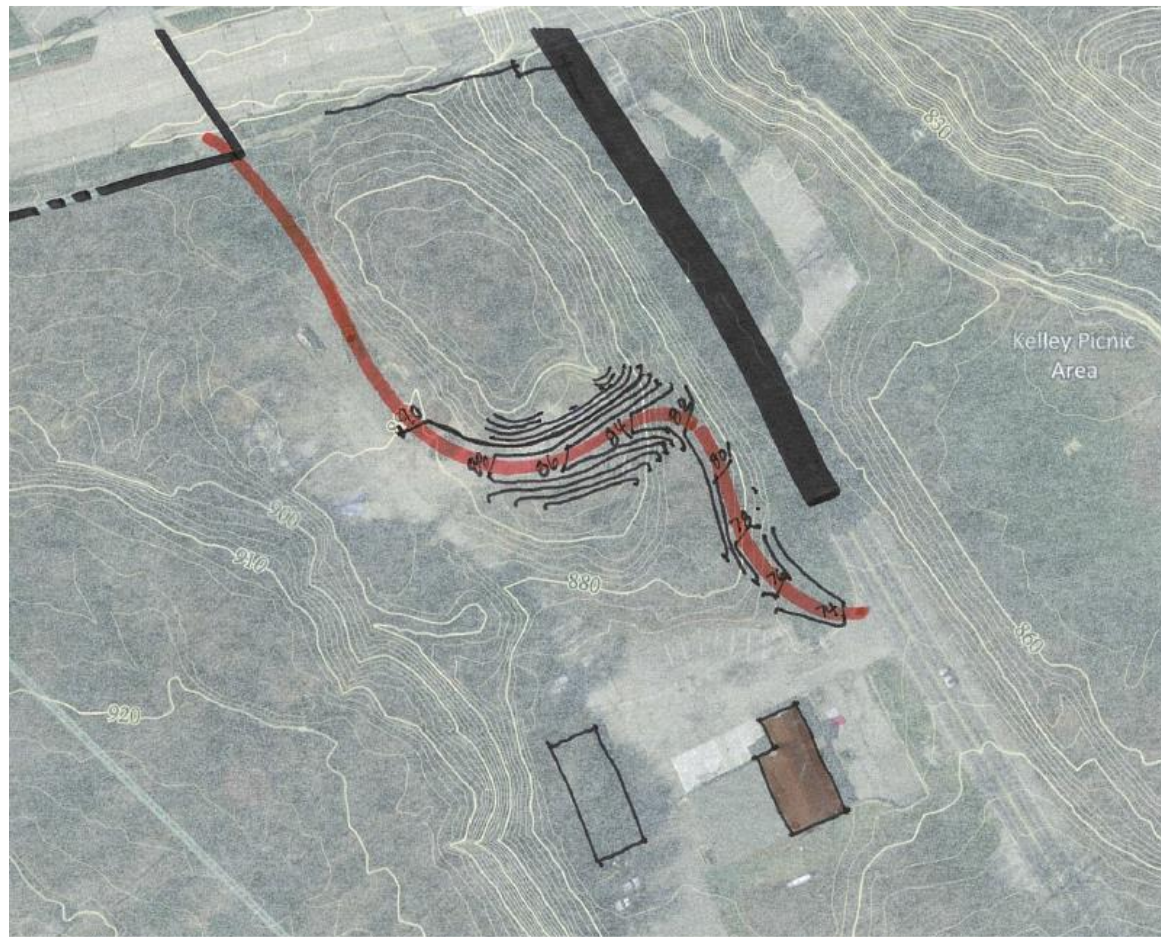
Welsh Woods Area

- Maintain historic integrity of Civilian Conservation Corps shelter. Consider retrofit as 4-season facility.

drainage tools to intercept water and reduce onsite impacts on park.

Welsh Woods Area

- Maintain historic integrity of Civilian Conservation Corps shelter. Consider retrofit as 4-season facility.



Kelley Picnic Area

- Add crosswalk across Euclid Creek Parkway.



- Proposed Trail
- Land Protection
- Proposed Site Improvement
- All Purpose Trail
- - - Other Trails
- Water
- Wetland



Euclid Creek Reservation
Master Plan (Draft)

October 2015



INITIAL PRIORITIES

- Create new trail access from Monticello.
- Upper Highland – address bridge replacement.
- Study creek issues. Relocate APT. Develop solution to wall failure.
- Add exercise equipment and play area.



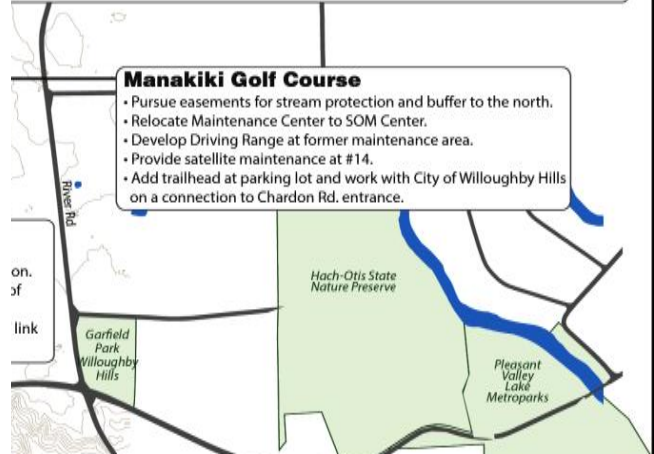
Reservation-wide Considerations

- Focus on wayfinding, including park entryways and orientation.
- e - water lines, culverts and headwalls - incorporate green infrastructure options as
- ail sustainability by reducing trails, improving condition, combining uses, and simplifying
- ies, restoration opportunities, and threats to ecological systems (ex.: Hemlock Woolly
- ion plan overlay.
- ry Camp Sites. Operate on a permit system.
- and skinned infields in all locations except Forest Picnic Area. Provide option for bases and
- nt at reserve facilities.



Manakiki Golf Course

- Pursue easements for stream protection and buffer to the north.
- Relocate Maintenance Center to SOM Center.
- Develop Driving Range at former maintenance area.
- Provide satellite maintenance at #14.
- Add trailhead at parking lot and work with City of Willoughby Hills on a connection to Chardon Rd. entrance.

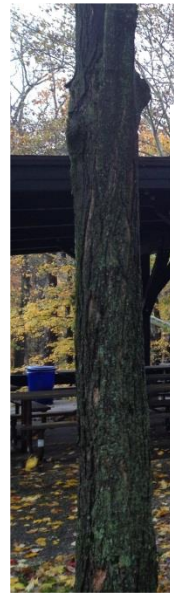


- expand trail system to north to Oxbow and south to Rogers Road.
- Create better river access with wading steps for fishing and kayaks.
- Replace stairs and shelter slab; improve parking.



Reservation-wide Considerations

- Focus on wayfinding, including park entryways and orientation.
- Address infrastructure - water lines, culverts and headwalls - incorporate green infrastructure options as appropriate.



ate pavement to protect
nding sensitive resources.

Area

Squire's Castle,
like Metroparks (Pleasant
t) and Hach-Otis State
n to Chardon Road and
ure maintenance -
and pavement.

Oxbow Area

- Primitive trail / fishing deck/
connect to Old River Farm.

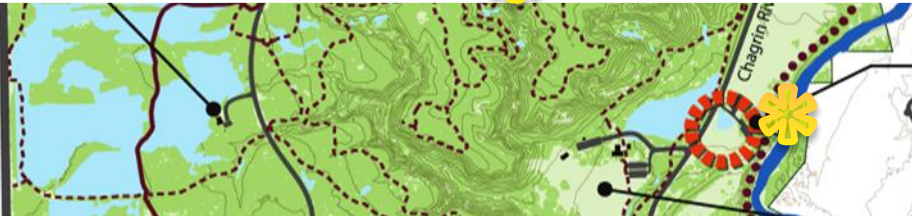
Strawbe

- Remove mon
- Expand trailh
- Reduce width
tion All Purpo
- Modify corrid
- Dredge Straw
fishing decks.
- Replace overf
Civilian Conse
design it to se
- Mitigate past

Intergrove Cabin Area

- Continue to promote Intergrove
Cabin as reservable shelter / retreat
center, including serving as camp
base.
- Continue wetland restoration.
- Limit trails in the area due to wet
soils.

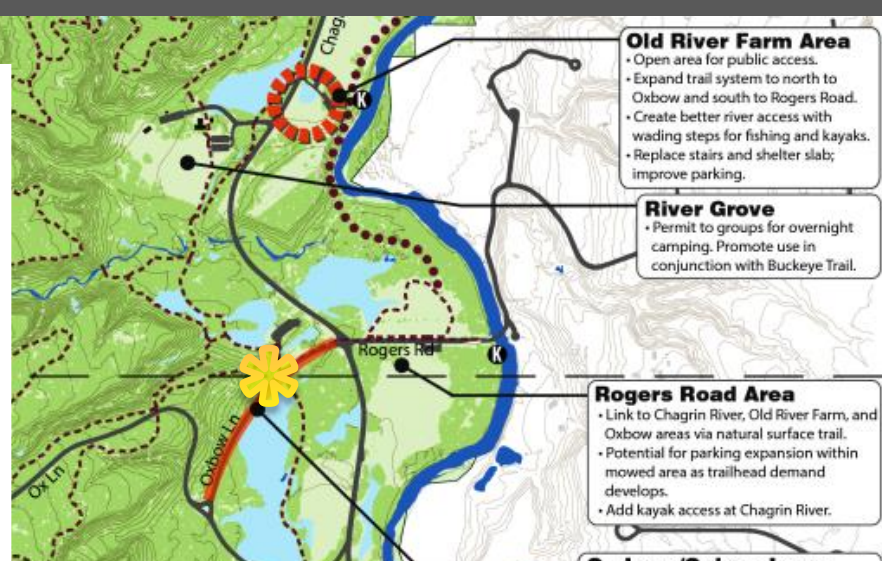
SOM Center Rd



Old River Farm Area

- Open area for public access.
- Expand trail system to north to
Oxbow and south to Rogers Road.
- Create better river access with
wading steps for fishing and kayaks.
- Replace stairs and shelter slab;
improve parking.

- Continue wetland restoration.
- Limit trails in the area due to wet



Oxbow Lane

- Upgrade north leg of Oxbow Lane, etc. across to existing parking for field.

Williams Woods

- Upgrade road. Add interpretive A.B. Williams and the overlook structure and trail.
- Upgrade on Castle Valley trail. Upgrade Safety Project.
- Upgrade system; reduce parallel legs; improve sensitive ravines and overlooks and benches.

Dinger's Marsh

Run

- Upgrade BMPs to mitigate stream water impacts and repair channel.

Brook

- Upgrade ability of removing box culverts to improve cold water habitat.

Wilson Mills Trailhead

- Expand parking to add 15 spots in a double bay configuration.

Chagrin River Corridor

- Connection to the south and Buckeye Trail as part of Chagrin Valley Connectors Initiative.
- Add gravel parking and kayak access at north side of Mayfield Road.
- Identify trailheads.

Nature Center Area

- Short term - upgrade parking lot portable toilets to CXT.
- Upgrade guest experience by creating welcoming façade and entry as well as updates to interior layout, finishes, displays, and lighting. Address drainage and utility issues.
- Improve accessibility and access for emergency services. Consider accessible parking or drop-off area closer to building.
- Phase out Education Building. Potentially consolidate into one structure including classroom, kitchen, and restrooms that are available to guests when center is closed. Owl Aviary could remain as stand-alone feature.
- Promote rental of meeting space to outside groups.
- Deepen Sunset Pond. Control / monitor hydrilla in Sanctuary Marsh.

Forest Picnic Area

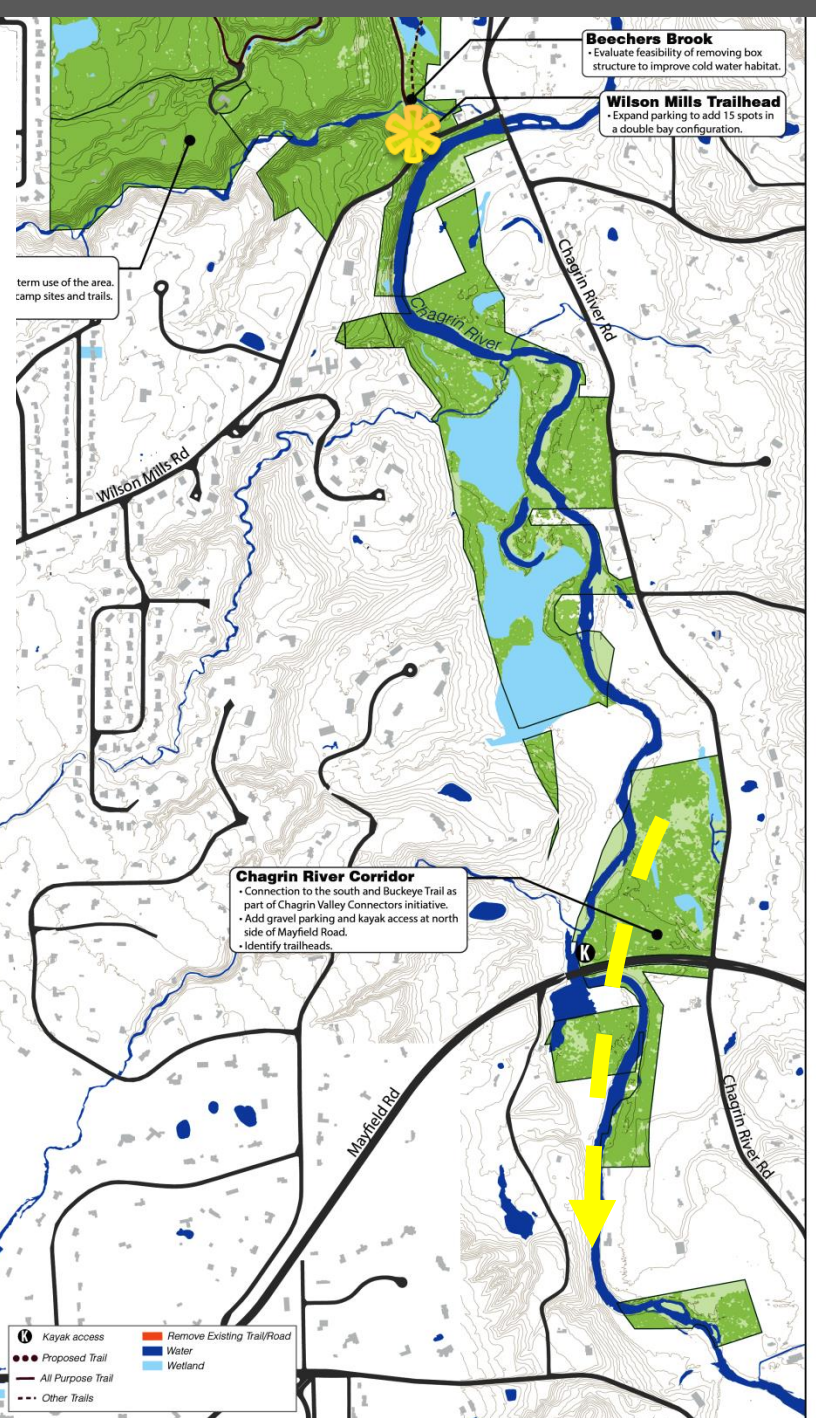
- Replace Romtec with CXT.
- Design nature play area.



North Chagrin Reservation
Master Plan (Draft)

October 2015





INITIAL PRIORITIES

- Parking / Road Changes at Chardon Road and Whispering Woods
- Trail and Wayfinding Improvements
- Improved Access at Old River Farm
- Nature Center Area Improvements
- Oxbow Lane – Change to Single Entry Road
- Chagrin Valley Connectors Study



Reservation-wide

- Improve trail sustainability by reducing trails, combining uses, simplifying network, and enforcing inappropriate trail use (off-trail and equestrian).
- Focus on wayfinding, including park entryways and orientation.
- Address invasive species, restoration opportunities, and threats to ecological systems (ex.: Hemlock Woolly Adelgid) with restoration plan overlay.
- Expand utility service (water is only available at Polo Fields and Look About Lodge).

Polo Field Recreation Area

- Define edges. Indicate open for public access on signage (change for special events).
- Improve trail connections and trail to river.
- Add kayak access along river near Woodland Road.
- Promote shelters as reserve facilities.
- Convert restrooms to flush facilities.
- Add 1 mile paved All Purpose Trail loop.
- Hold additional public events as appropriate (races, special event related to river, etc.) - cluster more active recreation here to protect high-quality natural resources.

Wiley Creek Area

- Maintain restoration work and control invasive species.

Look About Lodge

- Improve bridle trail down Miles Road.
- Manage use of historic structure for long-term sustainability.
- Continue to staff for public access during peak periods / weekends. Communicate other opportunities for programs at site and online.

Sulphur Springs Area

- Add wayfinding information and trailhead amenities.
- Upgrade to CXT for seasonal use.
- Protect recent upstream restoration and continue to improve cold water habitat; monitor as protected conservation area.
- Mitigate damage from foot traffic and storm water in main area with plantings and low cable barriers until established.
- Evaluate parking reconfiguration.

Arbor Lane Area

- Add signage for trail and roadways to reduce confusion at Arbor Lane / Hawthorn Parkway intersection.
- Develop Arboretum as picnic area/trailhead with drinking

Chagrin Valley Connectors

- Explore feasibility of Chagrin Valley Connectors with partners for river corridor. Transportation for Livable Communities Initiative study led by partners; explore trail surface as well as trail route options.

Chagrin Boulevard

- Add wayfinding to Chagrin Valley Overlook Trail.
- Eventually expand to add parking for 8-10 additional cars.
- Provide river access for fishing.

Jackson Field

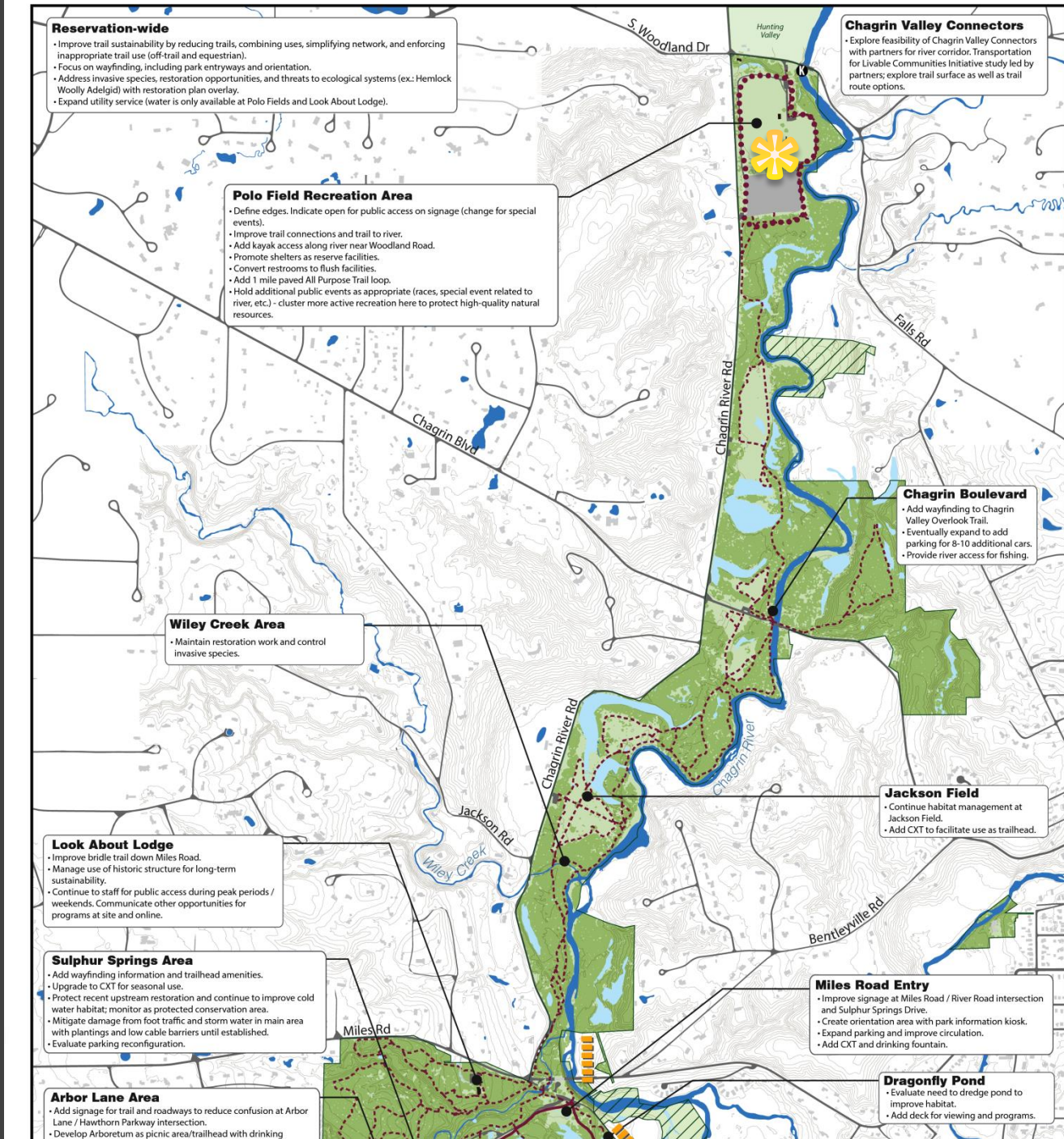
- Continue habitat management at Jackson Field.
- Add CXT to facilitate use as trailhead.

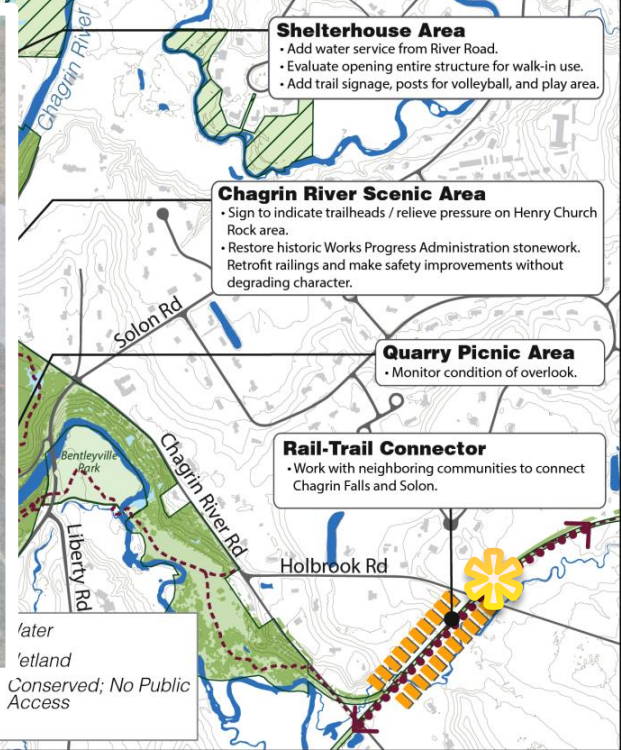
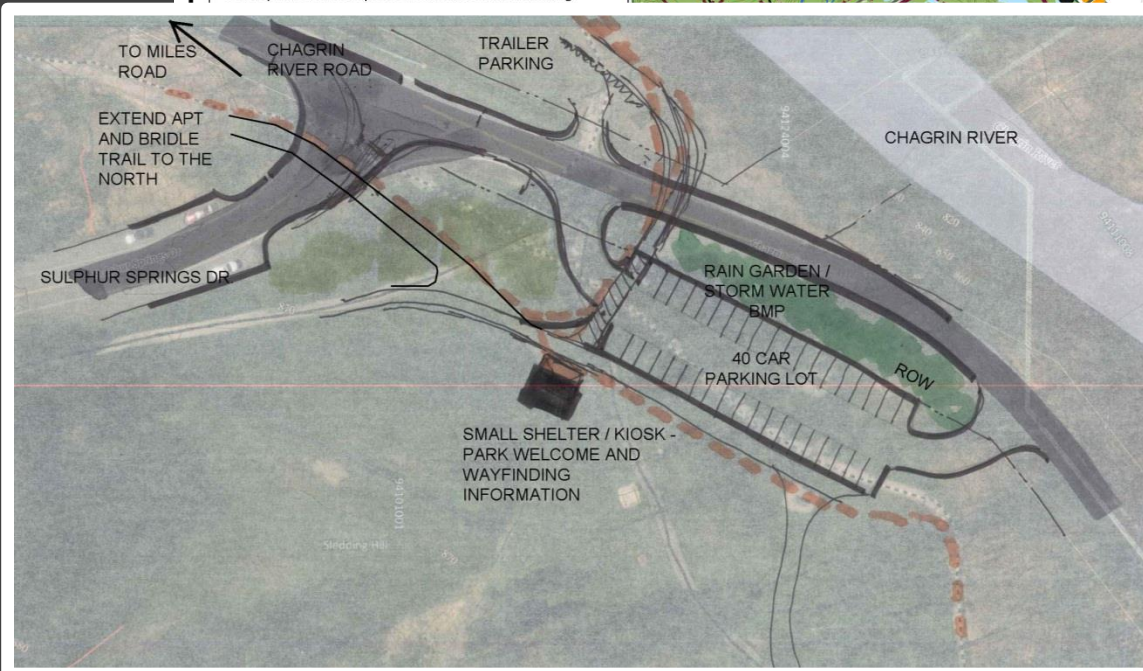
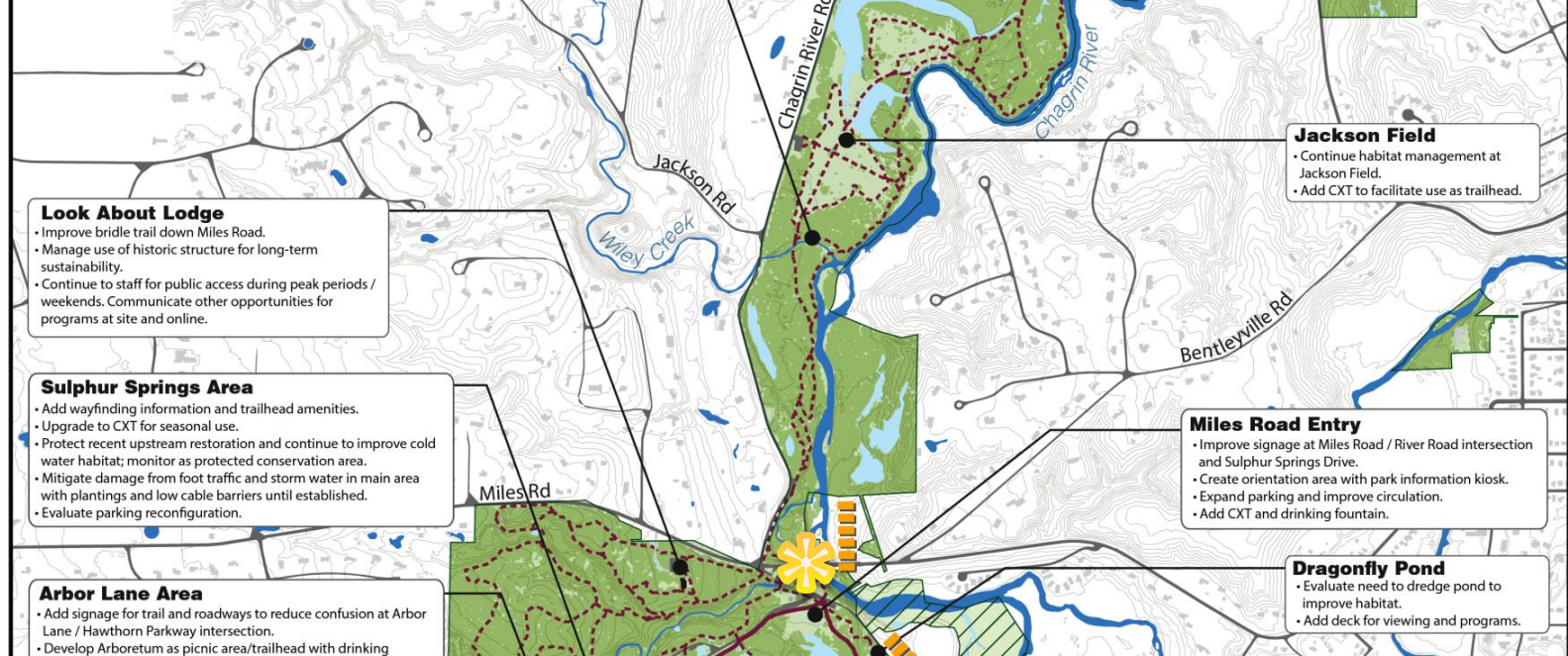
Miles Road Entry

- Improve signage at Miles Road / River Road intersection and Sulphur Springs Drive.
- Create orientation area with park information kiosk.
- Expand parking and improve circulation.
- Add CXT and drinking fountain.

Dragonfly Pond

- Evaluate need to dredge pond to improve habitat.
- Add deck for viewing and programs.





Look About Lodge

- Improve bridle trail down Miles Road.
- Manage use of historic structure for long-term sustainability.
- Continue to staff for public access during peak periods / weekends. Communicate other opportunities for programs at site and online.

Sulphur Springs Area

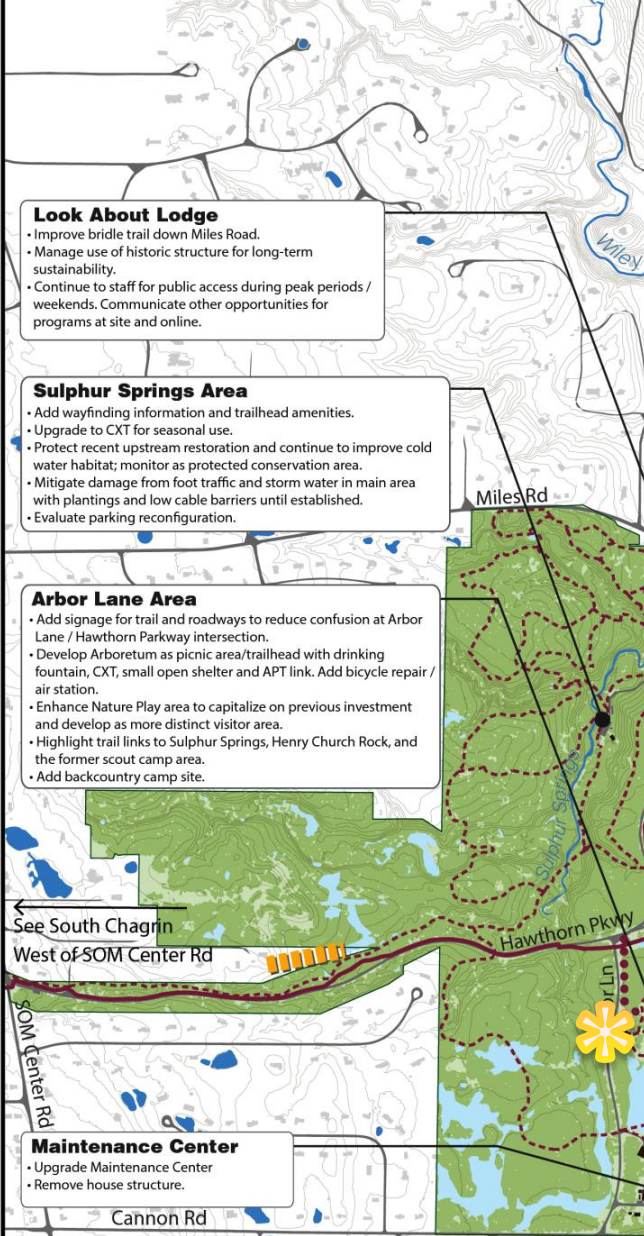
- Add wayfinding information and trailhead amenities.
- Upgrade to CXT for seasonal use.
- Protect recent upstream restoration and continue to improve cold water habitat; monitor as protected conservation area.
- Mitigate damage from foot traffic and storm water in main area with plantings and low cable barriers until established.
- Evaluate parking reconfiguration.

Arbor Lane Area

- Add signage for trail and roadways to reduce confusion at Arbor Lane / Hawthorn Parkway intersection.
- Develop Arboretum as picnic area/trailhead with drinking fountain, CXT, small open shelter and APT link. Add bicycle repair / air station.
- Enhance Nature Play area to capitalize on previous investment and develop as more distinct visitor area.
- Highlight trail links to Sulphur Springs, Henry Church Rock, and the former scout camp area.
- Add backcountry camp site.

Maintenance Center

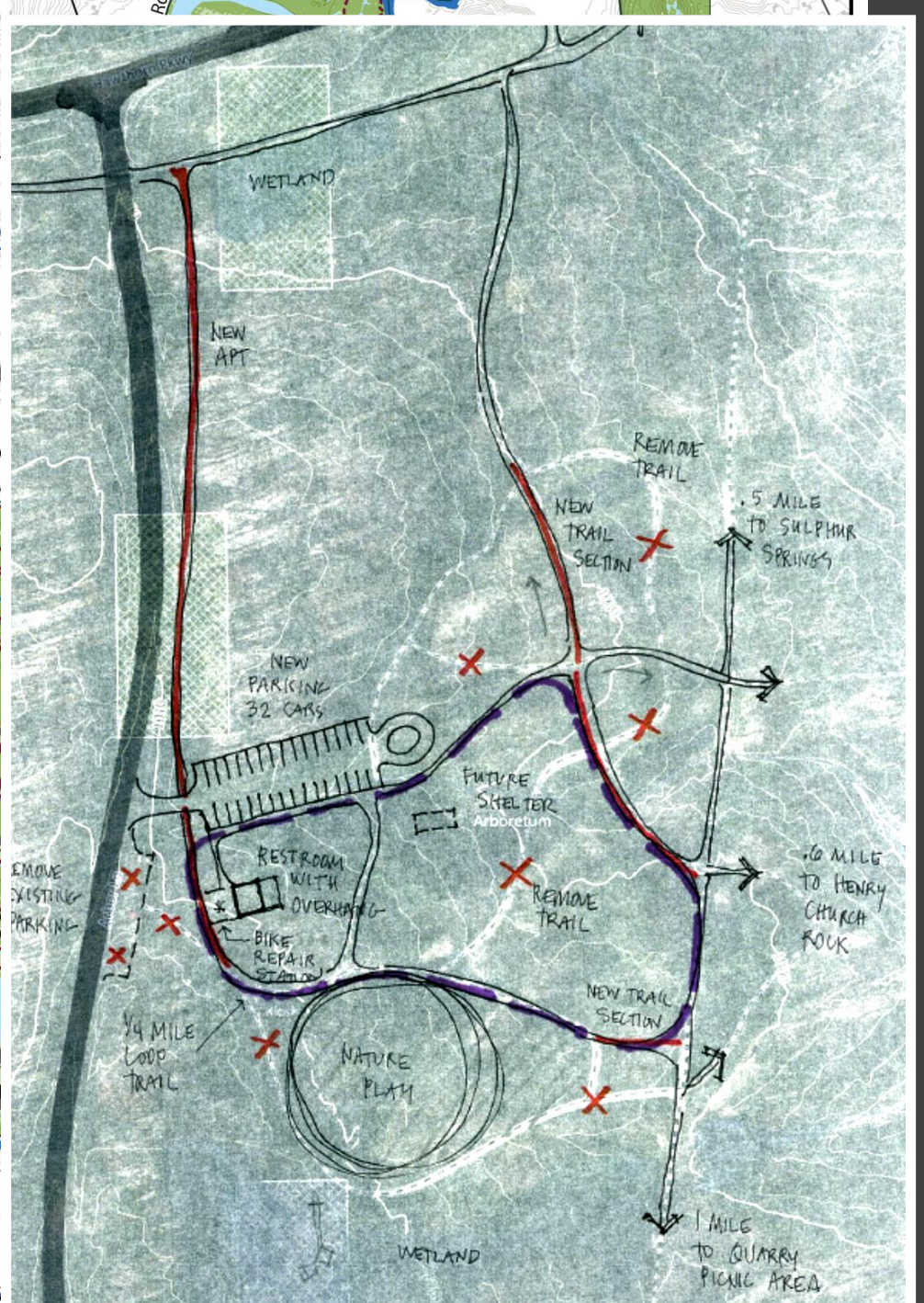
- Upgrade Maintenance Center
- Remove house structure.



South Chagrin Reservation
Master Planning (Draft)
East of SOM Center Road

October 2015

0 500 1,000
Scale in feet



- Harper Ridge Picnic Area**
- Evaluate upgrading Harper Ridge shelter to year-round reserve facility with observation deck.
 - Bring in utilities / improve restroom (ideally flush; CXT at minimum) / add water fountains.
 - Add site features and expand parking, including trailhead parking outside gate.

- Hawthorn Parkway**
- Implement restoration plan.
 - Consider trail to the south to provide program access from neighboring elementary school.

- Hawthorn Ridge Picnic Area**
- Add loop trail. Work with Natural Resources to identify location.
 - Consider additional acquisitions in area.

- Slodding Hill**
- Add trail connecting Shadow Lake, Hawthorn Ridge, and Richmond Road.
 - Develop backcountry camp site.

- Shadow Lake Area**
- Add green infrastructure improvements and accessible dock and overlook features.
 - Add horse trailer parking at end of existing parking.
 - Evaluate long term solutions to relocate head-in parking along Hawthorn Parkway.
 - Explore bird-friendly mowing regime and potential trail access (long term) with adjacent land owner.
 - Improve trail and roadway signage and trail connection to Bedford Reservation.
 - Evaluate Village of Glenwillow connector trail between South Chagrin Reservation and Pettibone Road.

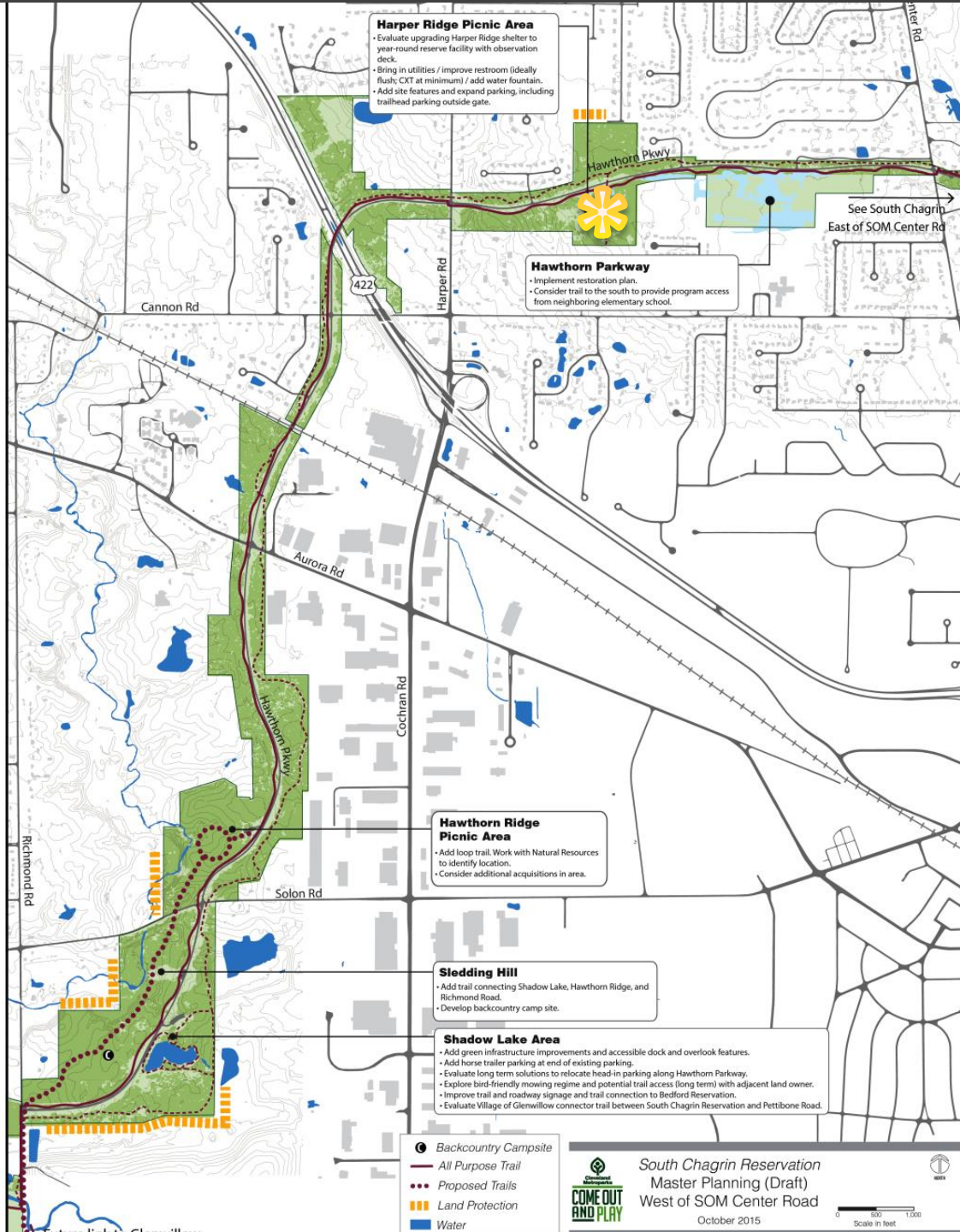
- Backcountry Campsite
- All Purpose Trail
- Proposed Trails
- Land Protection
- Water



South Chagrin Reservation
Master Planning (Draft)
West of SOM Center Road

October 2015

Scale in feet
0 500 1,000



See South Chagrin
East of SOM Center Rd

INITIAL PRIORITIES

- Polo Field All Purpose Trail Loop



- Miles Road Entry Area Updates



- Arbor Lane Picnic Area and Trailhead

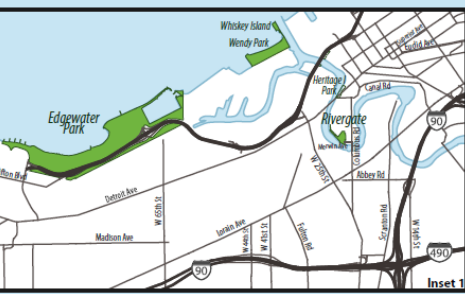


- Chagrin Falls Connector Trail



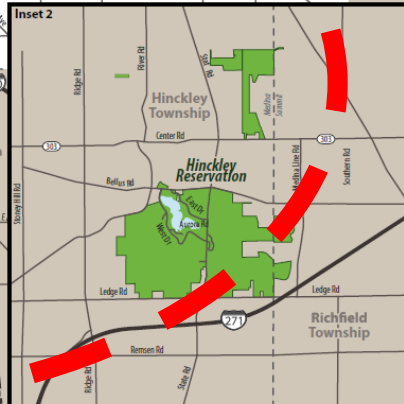
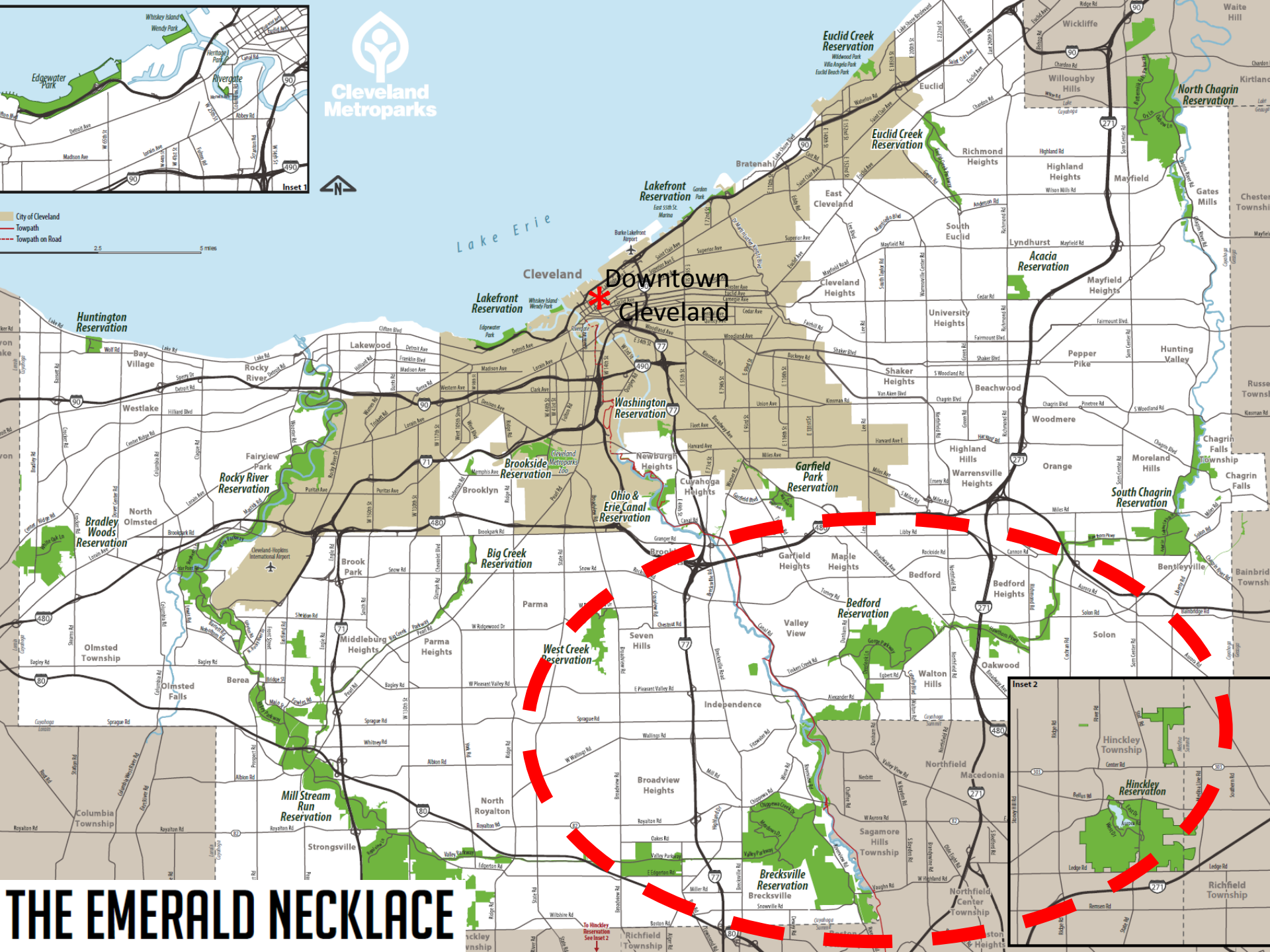
- Harper Ridge Area Improvements





City of Cleveland
 - - - - - Towpath
 - - - - - Towpath on Road

0 2.5 5 miles



THE EMERALD NECKLACE