

Embrace the Lake: CHEERS for Access, Equity and a Resilient Future in Cleveland

Summer Community Update, August 10, 2023





Join at
slido.com
#3500 363



Is this your first engagement event for CHEERS?

No - I've been to a couple!



Yes





We want to hear from you!

[Slido.com](https://www.slido.com) with the code [#3500363](#)



What do you like to see and do at the lake front in the summer?



What do you like to see and do at the lake front in the summer?

Boogie bording

See wildlife

Swim

Playing with my kid

Kayaking

just hang out! And paddle

Picnic

Cookout

hike

watch

bird

Go to the beach

swim, boat, take my dogs

Ride bike, swim, relax

Sunsets

Go to beach

Paddle boarding, swimming

Join at

slido.com

#3500 363



THE STUDY AREA

the Partners

CHEERS - Cleveland Harbor Eastern Embayment Resilience Study



City of Cleveland



Ohio Department of Natural Resources



Ohio Department of Transportation



The Port of Cleveland



Cleveland Metroparks



BLACK ENVIRONMENTAL LEADERS

Black Environmental Leaders Association

TO DOWNTOWN CLEVELAND >



Project Partner Lead Contacts:



Kelly Coffman

Principal Planner
4101 Fulton Parkway
Cleveland, OH 44144
(216) 635-3299 (Office)
Email: kbc@clevelandmetroparks.com



Linda D. Sternheimer

Director, Urban Planning and Engagement
1100 West 9th Street - Suite 300
Cleveland, OH 44113
Phone: 216-377-1348
Email: Linda.Sternheimer@portofcleveland.com

project stakeholders

Ariel International

Bike Cleveland

Bluestone Heights

Campus District

CEI

City of Cleveland – Wards 7 and 9

Cleveland Cultural Gardens

Cleveland Museum of Natural History

Cleveland Neighborhood Progress

Cleveland State University – MUPD

Greater Collinwood CDC

Cuyahoga Soil and Water Conservation
District

Cuyahoga County - Dept of Planning, Public
Works, and Public Safety

Cuyahoga County Council

Cuyahoga Land Bank

Cuyahoga River AOC

Doan Brook Watershed Partners

Destination Cleveland

Dominion Energy

Downtown Cleveland Alliance

East Clark Elementary Bird Nerds

Famicos

Forest City Yacht Club

Friends of Kirtland Park

Glenville

Greater Cleveland Partnership

Greater Cleveland Regional Transit
Authority (GCRTA)

Green Ribbon Coalition

Holden Parks Trust

Ingenuity

InterCity Yacht Club

Kirtland Bird Club

Kirtlandia Society

Lake Erie Coastal Ohio Trail Scenic Byway

Lakeside Yacht Club

LAND Studio

MidTown CDC

ODNR Division of Wildlife

NEORS

NOACA

Phastar

St. Clair Superior Development
Corporation

Slovenian National Home

St. Martin de Porres High School

The Foundry

Trust for Public Land

UCI

Upcycle Parts Shop

USACE

Village of Bratenahl

West Creek Conservancy

Western Cuyahoga Audubon Society

Western Reserve Land Conservancy

CITY OF CLEVELAND

- + Access & Connectivity
- + Recreation (fishing, picnic)
- + Equity (east side)
- + Cohesive Lakefront (asset, tourism)

ODNR

- + Coastal Resiliency
- + Restore Aquatic Habitat
- + Improve Water Quality
- + Public Access / Connectivity

ODOT

- + Reduce Maintenance Costs
- + Improve Safety (wave action)
- + Decrease Salting / Icing

BEL

- + Public Access & Equity

CHEERS!

- + Recreation (fishing, picnic)
- + Trails / Walkways
- + Increase Natural Areas
- + Create “go-to” Destination
- + Connect Park Spaces

CLEVELAND METROPARKS

Open, flexible spaces

Views!

Safer, easier access

New Programming (picnic, bbq, watersports, edu.)

Natural Spaces

Places to touch / interact with water

THE COMMUNITY

Trails

- + Dredge Material Capture
- + Beneficial Reuse Program
- + Support City Tourism

PORT OF CLEVELAND



project design team

ARUP

Project Management, Civil, Electrical, Lighting, Sustainability, Transportation, Resiliency, Bridge, Cost Estimating, & Financing Strategy



Project Management, Landscape Architecture, Community Engagement



Coastal Engineering, Surveying and Submerged Lands Lease



Ecology and Habitat Designs

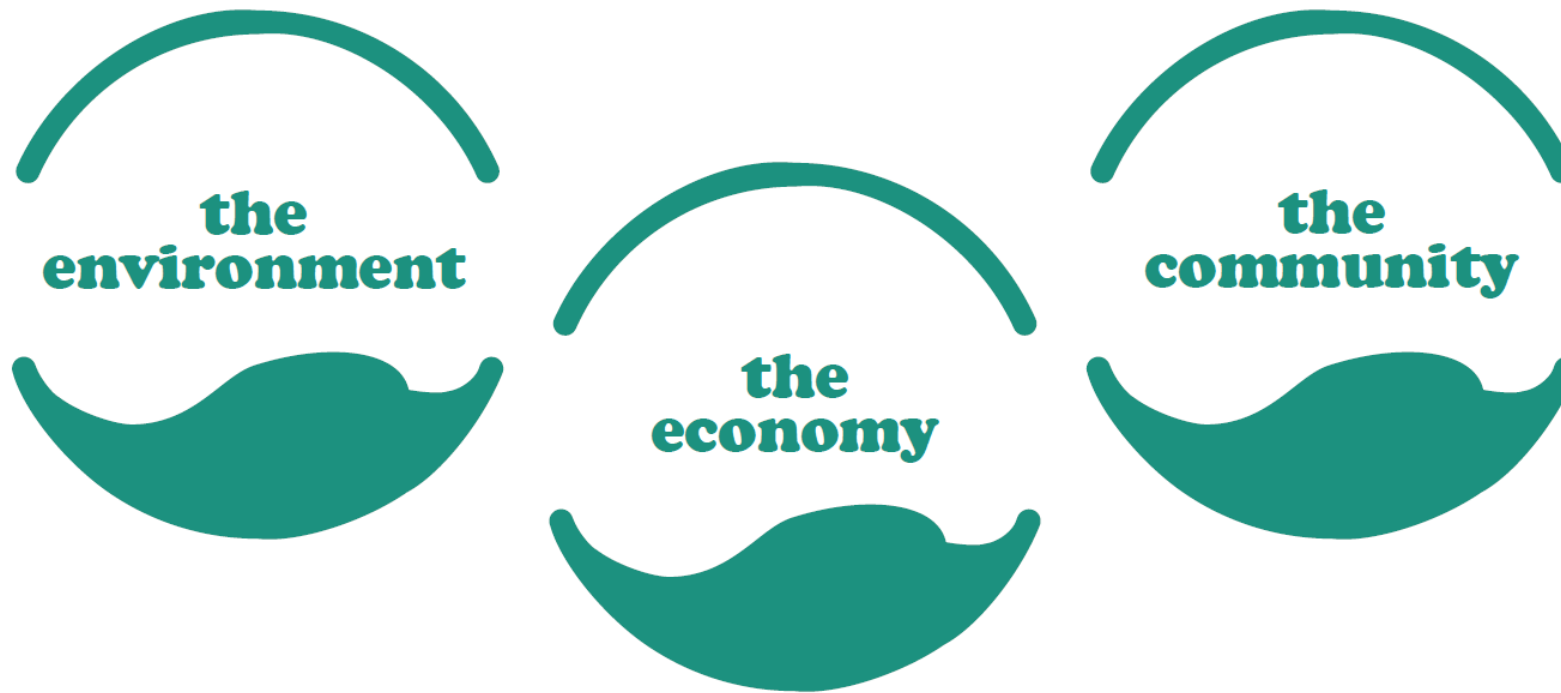
ASC
GROUP, INC.

Environmental, Cultural, & Historical Consulting



Geotechnical Engineering

The strategy is focused on developing an **equitable** and **resilient** future for Cleveland's east side lakefront and centers existing residents



Thanks for your continued engagement!



CHEERS to 2023!

Join us at a **Community Open House**
2 Dates + Times, Pick One!

1 THURSDAY, FEB 2
Goldhorn Brewery
1361 E 55th St, Cleveland, OH 44103
5:30 - 7:30 pm

2 SATURDAY, FEB 4
EJ Kovacic Rec Center
6250 Saint Clair Ave, Cleveland, OH 44103
1:30 - 3:30 pm

For more information, visit
ClevelandMetroparks.com/CHEERS
or call 440-331-8511

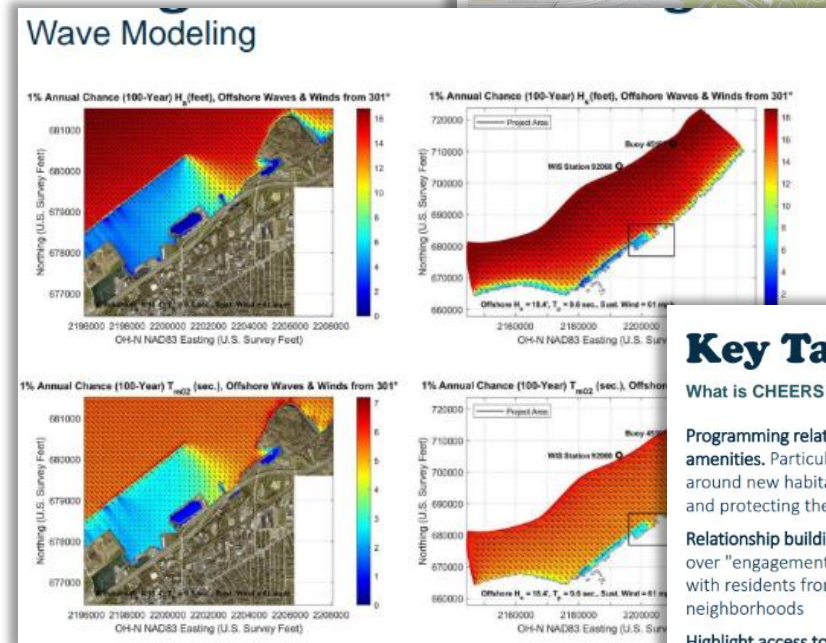
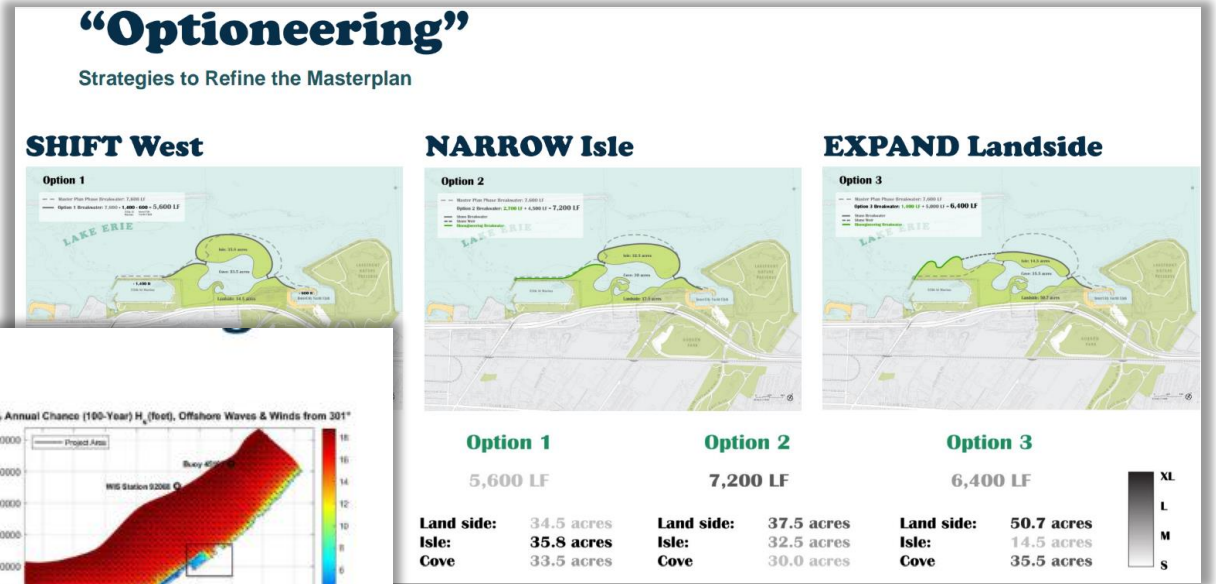
Cleveland Harbor Eastern Embayment Resilience Strategy

This study is made possible by a grant from the National Fish and Wildlife Foundation, Inc.



What have we been up to this spring?

- + February Community Engagement Results
- + Site Enabling Studies and Findings
- + Masterplan Refinement Process and Revised Plan



Key Takeaways

What is CHEERS

- Programming related to the new amenities. Particularly education around new habitats, nature, and protecting the environment
- Relationship building over "engagement," especially with residents from the adjacent neighborhoods
- Highlight access to parks as a driver of health - this is an opportunity to build in a healthy systems / living framework

TOP 3 PROJECTS



Safe and accessible connections were the top priority and questions

- Where will parking be
- Improved safety for pedestrians & bicyclists on 55th & 72nd Streets
- Connect to other community assets



February Community Engagement Results

Engaged over 200 people through in-person events and virtual survey!

Programming related to the new amenities.
Particularly education around new habitats, nature, and protecting the environment

Relationship building with adjacent neighborhoods. *Over “engagement”*

Highlight access to parks as a driver of health.
opportunity to build in a healthy systems / living framework

Safe and accessible connections
Top priority and questions: Where will parking be? Improved safety for pedestrians & bicyclists on 55th & 72nd Streets? Connect to other community assets?

TOP 3 PROJECTS



THE COVE



THE SHORE



GREENWAYS



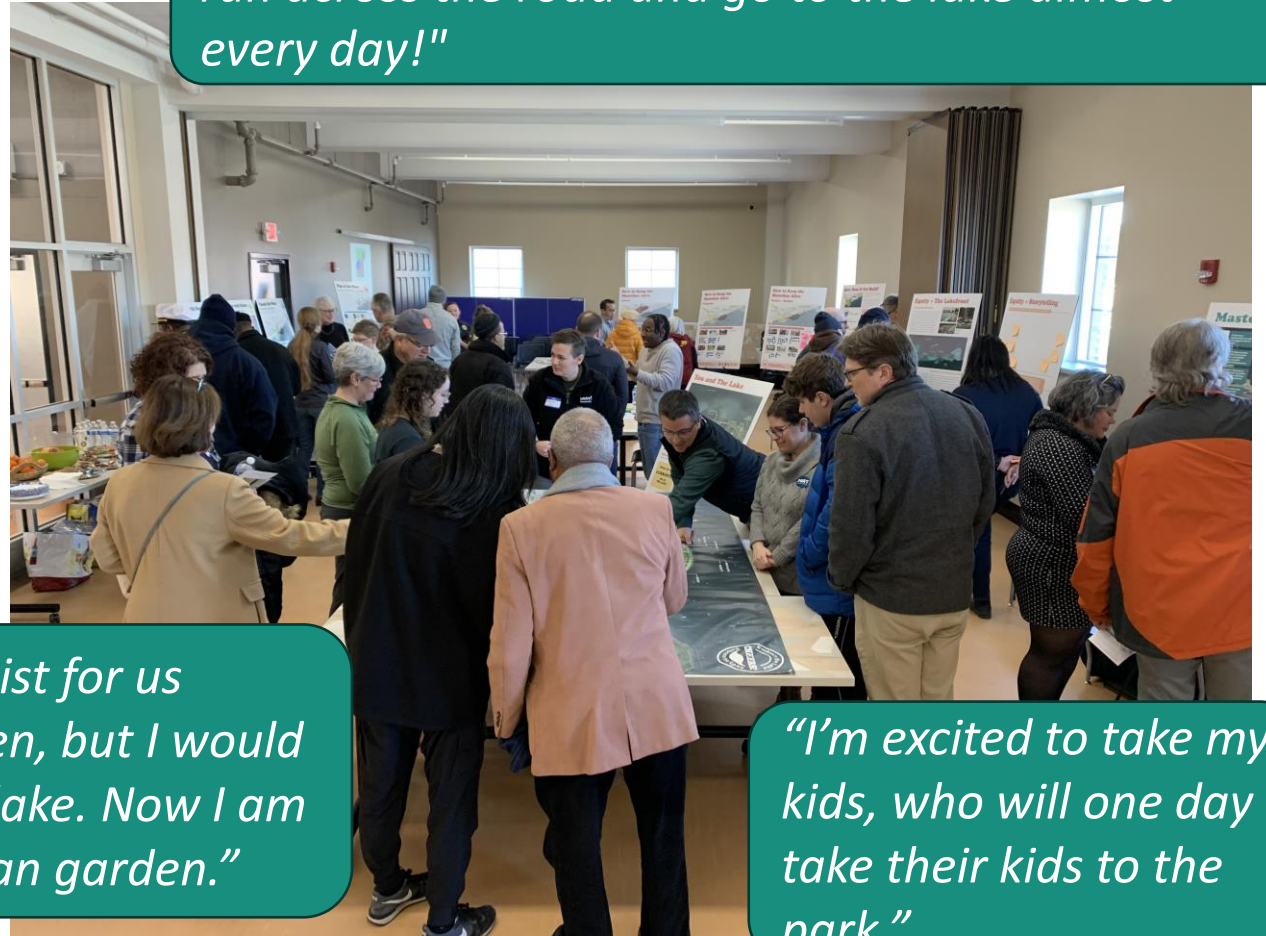
We talked about equity and park experience

Accessibility, provide equal and intentional access to the park and lakefront for the local community

Highlight generational narratives, provide space to hear about the different lived experiences and evolution of the lakefront from the community

More educational opportunities, group events, and programming - especially for kids

"I remember before I-90 my brothers and I would run across the road and go to the lake almost every day!"



"MLK and gardens didn't used to exist for us (African Americans). It was forbidden, but I would ride my bike down there to see the lake. Now I am the president of the African American garden."

"I'm excited to take my kids, who will one day take their kids to the park."

How to keep the shoreline alive

Creating a 365-park and lakefront experience

Community-generated art and opportunities to incorporate historical markers

Better connections and access to the neighborhood and nature preserve

Safer pedestrian / biking experience and more park & walk/bike options

Educational programming and activities to create more awareness and understanding of why it's important

TOP 3 PROGRAMS



SEASONAL
EVENTS



EDUCATIONAL
PROGRAMS
WITH SCHOOLS



WAYFINDING &
SIGNAGE

TOP 3 ACCESS + CONNECTIONS PROJECTS



CONNECTION
TO NATURE
PRESERVE



LIGHTING
AT HIGHWAY
CROSSINGS



MURALS AT
HIGHWAY
CROSSINGS

TOP 3 NATURE/HABITAT PROJECTS



EDUCATION
AROUND
HABITAT TYPES



IN-WATER
NATIVE MUSSEL
CAGES



FISHING PIERS

You and the Lake!

Currently Do At The Lake

- Most of the activity is around the E 55th St Marina for fishing, North Gordon Park, and the Nature Preserve.
- Top activities include: Fishing, Bike/Scooter, Walking

Want To Do At The Lake

- What people want to see most at the lake is as much fishing as possible, better access from the neighborhoods, new or improvements to pedestrian bridges, and well lit trails and plenty of amenities within the park.
- Some of the proposed amenities or activities include: food truck pavilion, places for concerts / live music, renovate & reuse of old aquarium, land bridges, and viewsheds for a “photo-op” of the view

Excited To Do At The Lake

- People are most excited to have access and to have the opportunity to spend more time at the lakefront.
- Top projects or experiences people are looking forward to are: biking & walking trails, nature programs, kayaking (kayak rentals), having consistent public access.



Master Plan Refinement

Connect with Nature

Excitement over the **many new plant and animal species**

Maintain existing fishing areas during construction until new fishing access is built

Potential programming ideas: community tree care program to adopt/plant a tree

Touch the Water

ENHANCEMENTS TO ACCESS



PEDESTRIAN EXPERIENCE
ACROSS I-90



NEW PEDESTRIAN
BRIDGE

Most use E 72nd St, agree there needs to be improvements to lighting and perception of safety

Consistent and connected bikeways (from the neighborhood and connecting to the west side)

Improvements to **Gordon Park pedestrian bridge** (visual interest and better ground connection)

Play at the Shore

TOP 3 WAYS TO USE THE LAKEFRONT



BOATING +
KAYAKING



PICNIC /
FLEX SPACE



WALKS /
BOARDWALK SPACE

Better bike infrastructure and access to the lakefront with bike network in the park

Strong interest in **water activities** – boating, kayaking, and fishing and places to rent equipment

Re-purpose the old aquarium for community use

Upcoming Engagement

Goal: Present Refined Masterplan and design process and continue to hone the design and programming

Style: *Smaller work-sessions* (breakout groups, pop-up events, etc.)

- Discuss topics, design/sketch together with the community, stakeholders, partners and the design team

Focus: We want to have *Community Conversations*

- Topics specific to the project moving forward (equity, programming, habitat, environmental justice, education, access, etc...)



Poll!

What topics do you want to discuss at the community conversations?





What topics do you want to discuss at the community conversations?

Balance of commercial and recreational

Fishing pier details

What community defines as safety/safe

protect expand habitats

Parking

Neighborhood input

cleanliness

Timeline

lifeguard shortages

Covered seating

Timing and funding

water access

Tree canopy

built structure sustainability,

At-risk species at reservation

Connections to bike network

Join at
slido.com
#3500 363



Site Investigations & Enabling Studies

Cultural and Environmental assessments were conducted



- ✓ Section 106 Scoping Request
 - The proposed development outlined in the masterplan will have no effect on historic properties. Substantial changes to the project design should be coordinated with SHPO.

- ✓ Level 1 Ecological Survey Report
 - Status – completed on March 31
 - ***Phase II ESA is recommended prior to construction***
 - ***Excavation within 300-ft of the boundaries of the Gordon Park Landfill will require a Chapter 513 Permit from the Ohio EPA.***



Local and regional ecological reference site visits complete



"Naturalized" Dredge Disposal Areas

Natural Areas / Preserves

Focus on habitat zone analysis from reference site visits



Naturally Occurring Habitat Zones

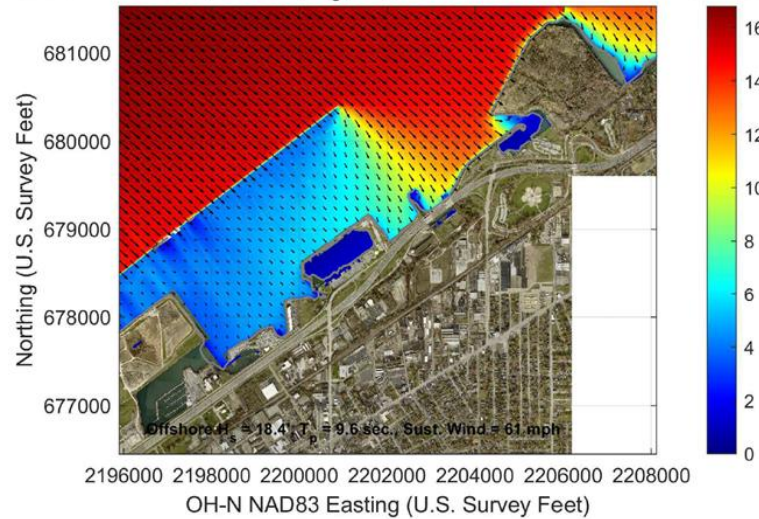
- Deepwater (>4' water depth)
- Shallow Near Shore (<4' water depth)
- Wetlands
- Meadow
- Upland Woodland

Human Dependent Habitat Zones

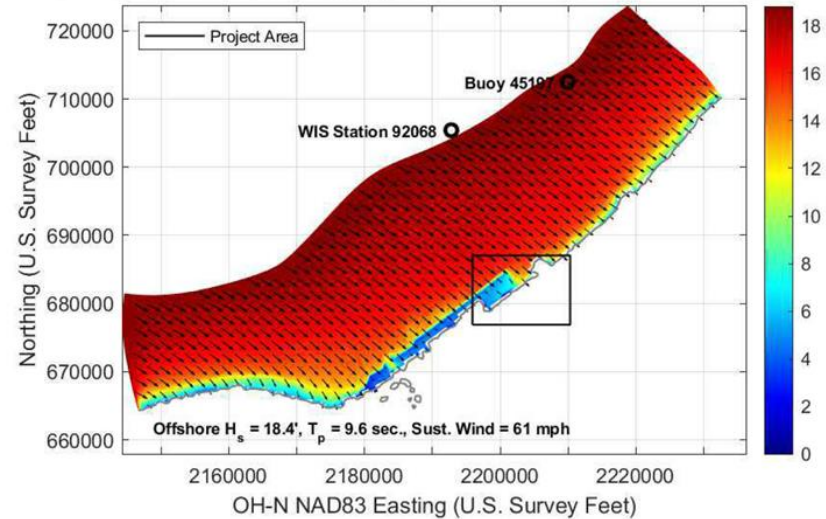
- Barrier Beach
- Revetments and Bioengineered Walls/Breakwaters
- Green Infrastructure/Stormwater Management

Advancement of wave modeling

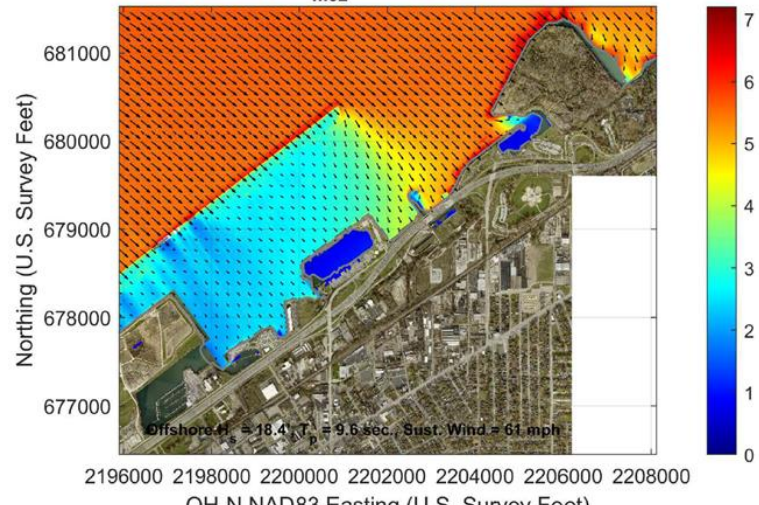
1% Annual Chance (100-Year) H_s (feet), Offshore Waves & Winds from 301°



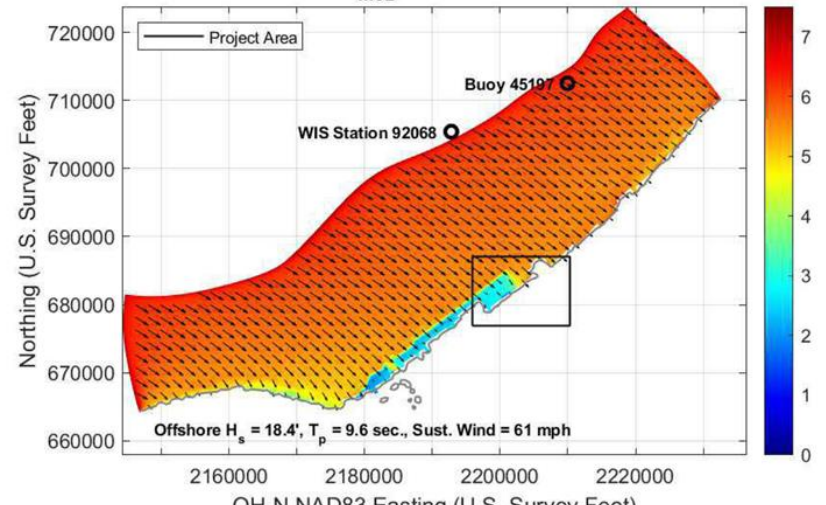
1% Annual Chance (100-Year) H_s (feet), Offshore Waves & Winds from 301°



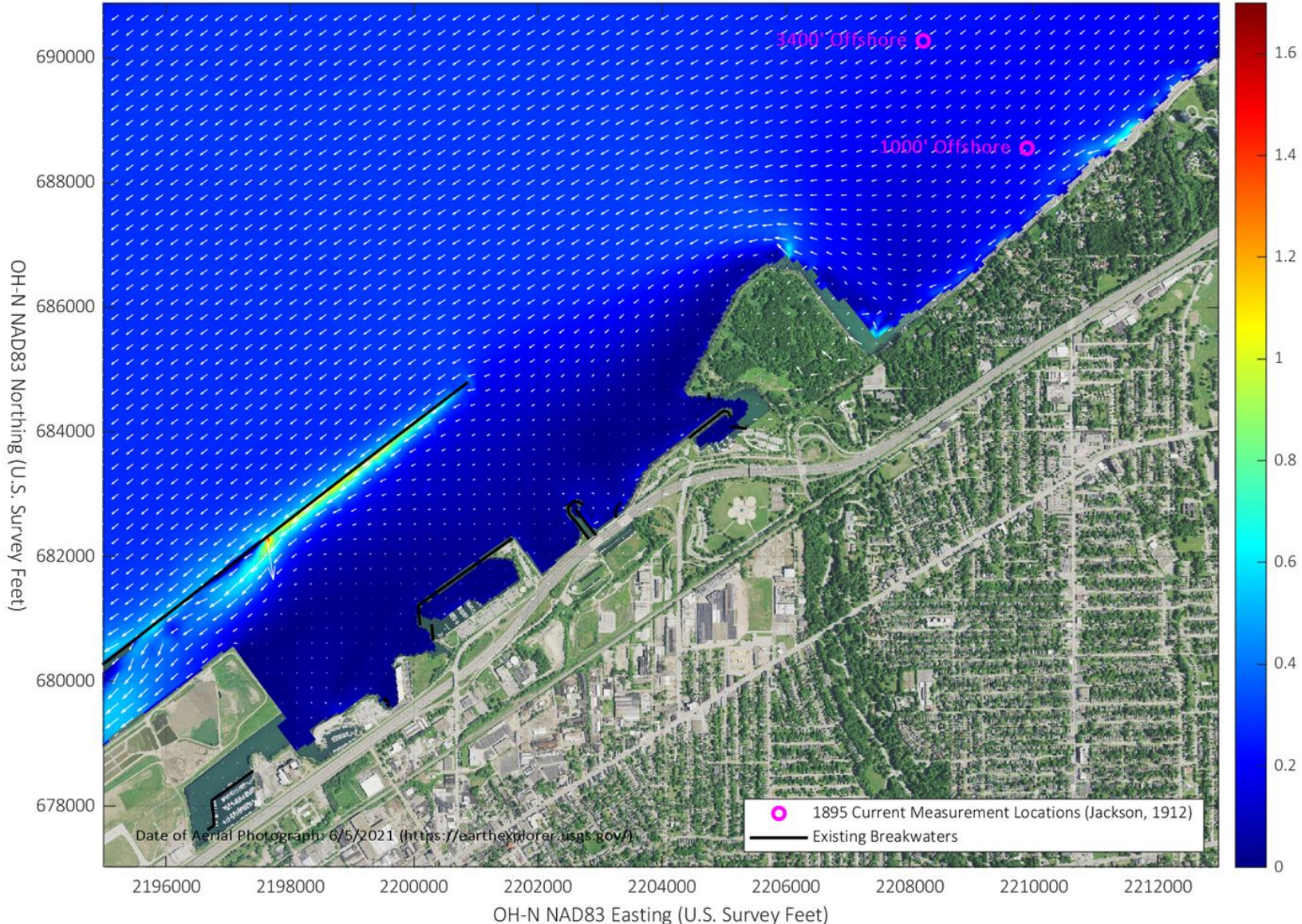
1% Annual Chance (100-Year) T_{m02} (sec.), Offshore Waves & Winds from 301°



1% Annual Chance (100-Year) T_{m02} (sec.), Offshore Waves & Winds from 301°



Creation of 3D flow model



Lots of permitting coordination!

- U.S. Army Corps of Engineers
 - Section 404 Permit
 - Section 10 Permit
 - Section 408 Review
- Ohio Department of Natural Resources
 - Shore Structure Permit
 - Submerged Lands Leases
 - Consistency Certification
- Ohio Environmental Protection Agency
 - 401 Water Quality Certification
- U.S. Coastal Guard
 - Private Aids to Navigations
- Agency Coordination
 - Ohio History Connection
 - ODNR Division of Wildlife
 - U.S. Fish and Wildlife Service
 - City of Cleveland
 - Cleveland-Cuyahoga County Port Authority

Masterplan Refinement



LAKE ERIE

CLEVELAND METROPARKS
LAKEFRONT RESERVATION

E. 55TH MARINA

GIDDINGS
HABITAT
SHORE

LEXIBLE EVENT
SPACE

PICNIC GROVE

55TH STREET

LAKESHORE BOULEVARD

E. 72
GATEWAY

INTERCITY
YACHT
CLUB

DOAN HABITAT
SHORE

NORTH
GORDON
PARK

CLEVELAND LAKEFRONT
NATURE PRESERVE

THE COVE

THE ISLE

THE LAKESHORE

VIEWING PAVILION

PICNIC GROVE

LAWN

MULTI-USE TRAIL

NATURE PLAY

OVERLOOK

NATURE TRAIL

THE EASTERN
FISHING COVE

VIEWING STEPS

LAWN

PICNIC PAVILION

E. 55TH FISHING

BOARDWALK
TRAIL

THE SHORE

THE LAUNCH

NATURE PLAY

THE HABITAT
LOOP

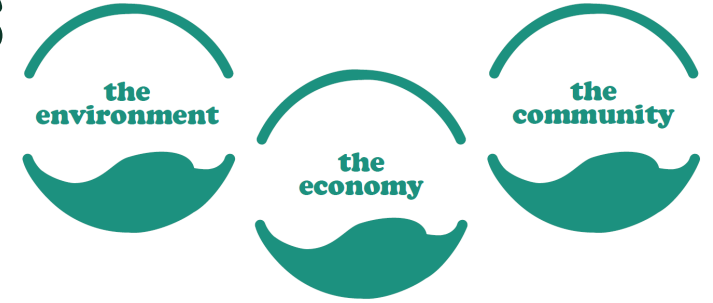
MARSH
WALK

THE GORDON
HILLS

THE LAKESHORE

Design Refinement Goals

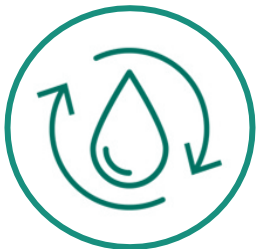
Creating a plan that maintains and expands on the CHEERS resiliency vision



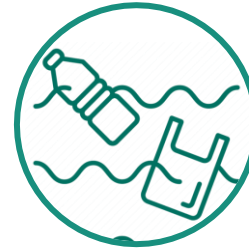
Reduce the cost by reducing the overall length of breakwater, while maintaining dredge fill capacity (20-years)



Expand ecology by creating diverse, site-appropriate terrestrial and aquatic habitats



Reduce the risk of adverse affects to water quality, provide movement of water through the cove to address water quality concerns



Address trash reduction, and consider overall park operations and maintenance



Expand upon the priorities identified in the Masterplan for programmatic opportunities, and continue to develop and refine the park programs based on community outreach events



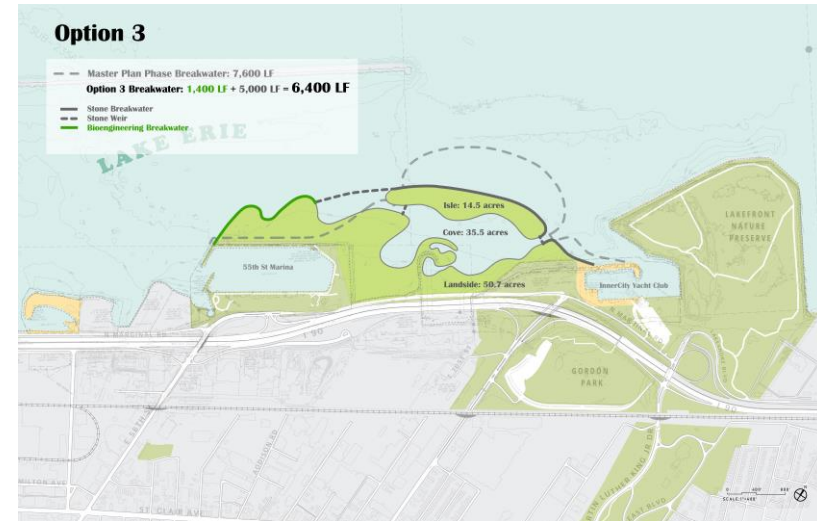
Improve park access, links to the neighborhood and community, and expanded parking for new park amenities

“Optioneering”

SHIFT West

NARROW Isle

EXPAND Landside



Master plan Phase

7,600 LF

BREAKWATER PERIMETER

LANDMASS

Land side: 35.7 acres
Isle: 35.2 acres
Cove 40.8 acres

Option 1

5,600 LF

Land side: 34.5 acres
Isle: 35.8 acres
Cove 33.5 acres

Option 2

7,200 LF

Land side: 37.5 acres
Isle: 32.5 acres
Cove 30.0 acres

Option 3

6,400 LF

Land side: 50.7 acres
Isle: 14.5 acres
Cove 35.5 acres



The Refined Plan



Design Refinement Goals



Reduce Length of Breakwater



Expand Habitat



Water Quality



Debris Reduction



Expand Programmatic Opportunities



Improve Site Access

The Refined Plan



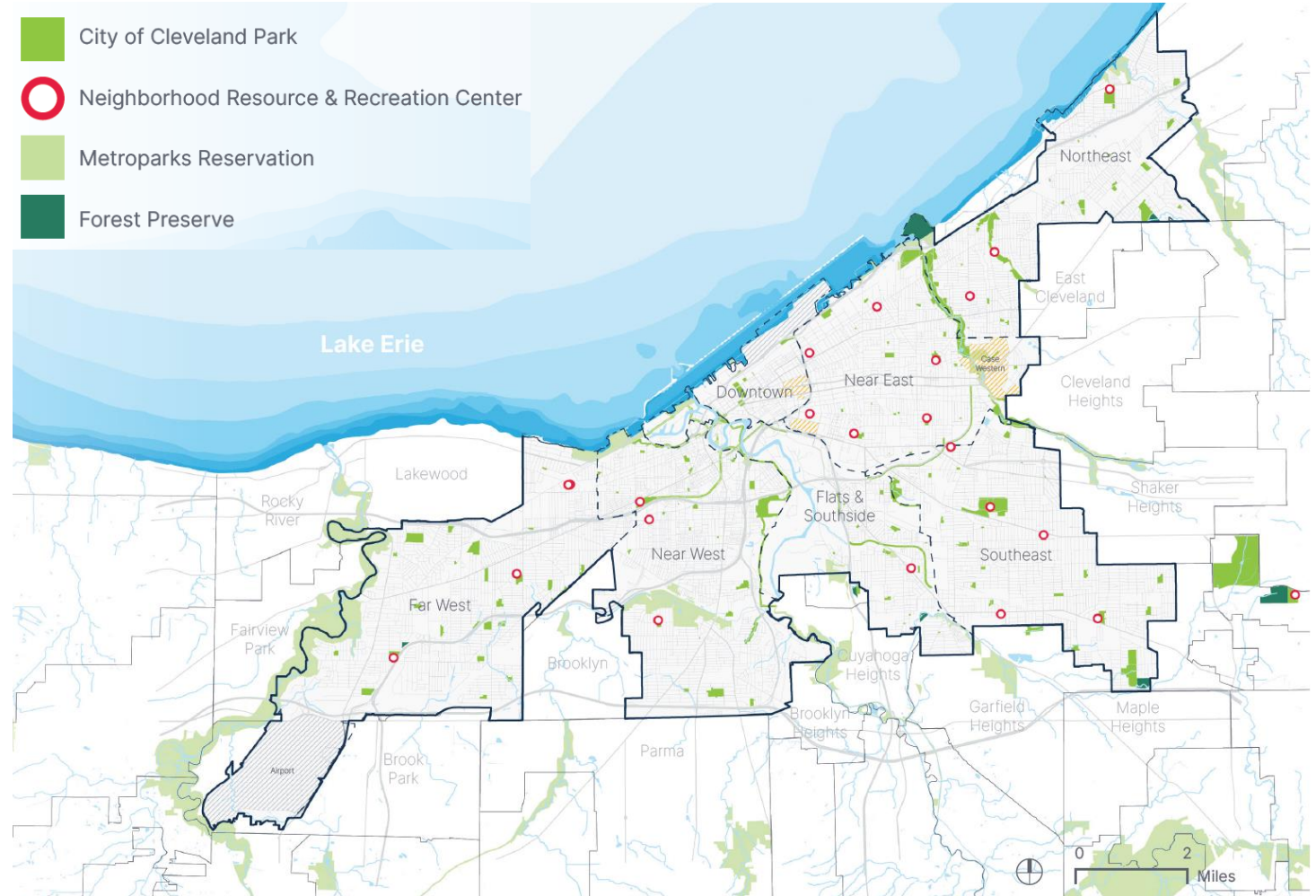
Partner Updates

City of Cleveland Parks and Recreation Master Plan

The City of Cleveland's Mayor's Office of Capital Projects is in the first phase of planning the future of parks and recreation in the city of Cleveland.

The city is working with a consultant team and conducting a collaborative and public-centered planning process.

More information and a survey are at www.cleparcsrecplan.com



City of Cleveland North Coast Harbor



Cleveland wants feedback on downtown lakefront draft plan that includes beach, 'land bridge' with a graceful curve & more

Updated: Jul. 27, 2023, 5:07 p.m. | Published: Jul. 27, 2023, 3:10 p.m.

By [Steven Litt, cleveland.com](https://www.cleveland.com)

See www.clevelandnorthcoast.com for more information and a survey

James Corner Field Operations

Cleveland unveils new vision for downtown lakefront land bridge

Renderings depict images of a Cleveland lakefront land bridge designed by James Corner Field Operations to connect downtown to waterfront attractions including the Rock and Roll Hall of Fame, Browns Stadium, and the Great Lakes Science Center.



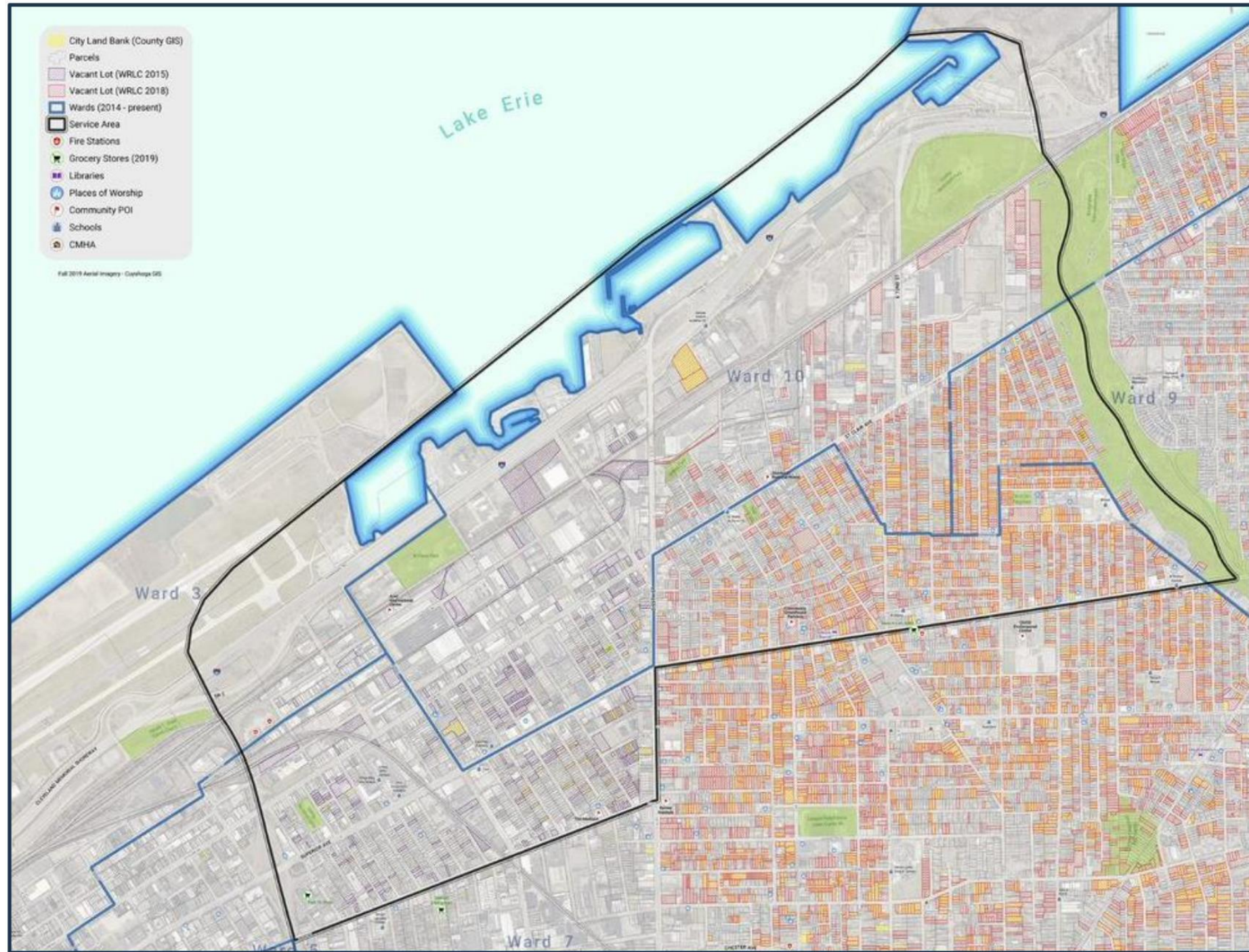
**stClair
Superior**

DEVELOPMENT CORPORATION

Wayfinding Planning Process

Starting Fall of 2023

ST. CLAIR SUPERIOR SERVICE AREA:





SCSDC STRATEGIC GOAL AREAS



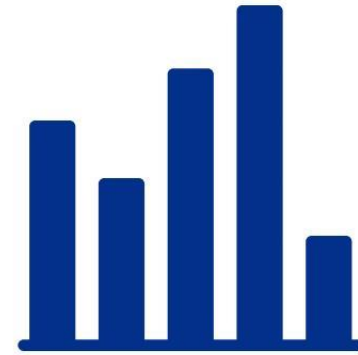
People

- Engaging Residents
- Promoting a Safe Community
- Connecting Businesses



Place

- Strengthening the Housing Stock
- Leveraging Assets & Activity Nodes
 - Enhancing the Neighborhood
 - Advocating for Access



Performance

- Sharing Our Story
- Building Organizational Capacity
- Stabilizing Finances
- Maintaining Stable Governance

Importance of Wayfinding :



Wayfinding...

- Shows that a place is well loved and cared for, which attracts businesses and investments
- Increases a sense of neighborhood pride
- Improves connections to Lake Erie
- Provides support for local businesses through marketing

This grant will cover the costs for wayfinding signs, neighborhood banners, and a neighborhood welcome sign

Wayfinding in Cleveland:



Project Timeline:

Expected Start Date: July 1st, 2023

Expected End Date: June 1st, 2024



- **Planning (6 months)**

- Guide Studio will develop a plan for the design, placement, and implementation of signage

- **Implementation (6-12 months)**

- Signs and banners will be produced based on designs by Guide Studio and installed around St. Clair Superior

Cuyahoga County ARPA: \$50,000

- Project Implementation - Received

Cleveland Foundation: \$25,000

- Wayfinding Plan - Received

Ohio and Erie Canalway: \$25,000

- Wayfinding Plan - Pending

\$350,000 Gap - Fundraising Strategy

stclairsuperior.org



Project Support Opportunities



THANK YOU!



University Circle & The Cleveland Clinic

St. Clair Superior

MidTown AsiaTown

Glenville

Gordon Park

MLK Jr. Drive

I-90

InterCity Yacht Club

Cleveland Lakefront Nature Preserve



The Gordon Hills

E. 55th Street

I-90



The Launch & The Shore

Downtown Cleveland

Burke Lakefront Airport



The Habitat Loop

Kirtland Park



The Isle



Fishing Cove

55th St Marina

The Bay

The Cove

LAKE ERIE