

HINCKLEY RESERVATION

PARK PLAN

SEPTEMBER 2024

- Proposed Trail
- Land Protection
- Proposed Improvement Site
- CM All Purpose Trail
- Other Paved Trail
- Buckeye Trail
- Other Trails
- Conserved; No Public Access
- Wetland Enhancement Project Area
- Water
- Wetland

TIMBERLANE FARM
 • Continue to support operations of police mounted unit

EAST BRANCH ROCKY RIVER
 • Protect high-quality natural resources as additional opportunities become available

RESERVATION-WIDE CONSIDERATIONS

- Hinkley is a legacy park, established in 1923. The park includes 2 archaeological sites and 18 additional cultural and historic resources. Review Geographic Information System (GIS) before projects involving site disturbances. Continued investment in maintaining historic resource features and park infrastructure and amenities is a priority
- Continue stewardship of and investment in park-wide infrastructure is needed - paving, utilities, structures
- Coordinate with partners to address key resource protection focusing on stormwater issues. Priority is the north side of Bellus from State to former stables. Incorporate water quality treatment features
- Coordinate with township on roadway issues. Highlight trail crossing locations with signage and pavement markings using Transportation for Livable Communities (TLC) study recommendations. Advocate for reduced speed limits on roadways adjacent to park property
- Pursue external Connections: Mill Stream Run Reservation, Brecksville Reservation, Medina County Parks, Summit Metro Parks, Cuyahoga Valley National Park, Richfield Heritage Preserve. Explore future trail within power line easement
- Continue to prioritize land protection opportunities – inholdings, adjacent high quality resources, and the East Branch Rocky River corridor
- Improve overall trail system and wayfinding. Designate loops to connect popular destinations - ledges, lake, forest, river, etc. Balance offerings for various types of users and experiences
- Review facility inventory and quality as well as rental rates. Assess utility availability at potential development sites / repurposing existing sites with a focus on views to lake and water access
- The park includes 3.7 miles of the Buckeye Trail. Address maintenance and wayfinding and consider amenities to complement this statewide hiking trail
- Continue to monitor and enforce encroachments and unapproved actions on park property.
- Identify appropriate location and add Backcountry Campsites
- Consider area for off-leash water play for dogs

0 500 1,000 1,500 2,000 ft



HINCKLEY RESERVATION PARK PLAN

SEPTEMBER 2024

- Proposed Trail
- ▨ Land Protection
- ▨ Proposed Improvement Site
- CM All Purpose Trail
- Other Paved Trail
- Buckeye Trail
- Other Trails
- ▨ Conserved; No Public Access
- ▨ Wetland Enhancement Project Area
- ▨ Water
- ▨ Wetland

EAST BRANCH ROCKY RIVER - WEST OF HINCKLEY

- Land protection – conserve additional floodplain; create park gateway from State Route 303
- Eventually develop trail connection to Mill Stream Run Reservation (road-based)

FORMER DUNCAN PROPERTY (SEE AREA PLAN)

- Explore trail connections and additional amenities needed at the former Duncan property
- Consider a new Boathouse / multipurpose structure

INDIAN POINT PICNIC AREA

- Open sightlines to lake and improve access to water
- Continue loop trail system along the lake

NORTH & SOUTH BALLFIELDS

- Continue current management

COASTING HILL

- Manage updated Coasting Hill and grassed T-ball fields
- Address paving

PENINSULA PICNIC AREA

- Add shoreline protection, boardwalk, and plantings to repair erosion issues and avoid future damage
- Enhance picnic area

BROOKLYN EXCHANGE CABIN

- Repair road

BOATHOUSE (SEE AREA PLAN)

- Re-evaluate use of building and site with full list of desired features and program needs. Consider alternative sites or a new structure with upper deck / shelter (long term)
- Make structure more welcoming and improve visitors' ability to connect with water
- Provide guest bathrooms and changing areas
- Enhance paddle access and add accessible launch

WORDEN'S LEDGES

- Concern about overuse and damage - consider when scheduling any area promotion
- Improve trails

LEDGE LAKE, POOL, AND SHELTERS

- Consider additional land protection within Johnson's catchment area
- Redesign to improve vehicular circulation and reduce conflicts with pool users. Identify opportunities to expand year round use
- Remove least used shelter and reforest area

KIWANIS AREA

- Add restroom
- Improve signage and clarify access for general public
- Create a contiguous uneven-aged native forest. Manage to improve wildlife and plant microhabitats

REDWING RESERVED PICNIC AREA

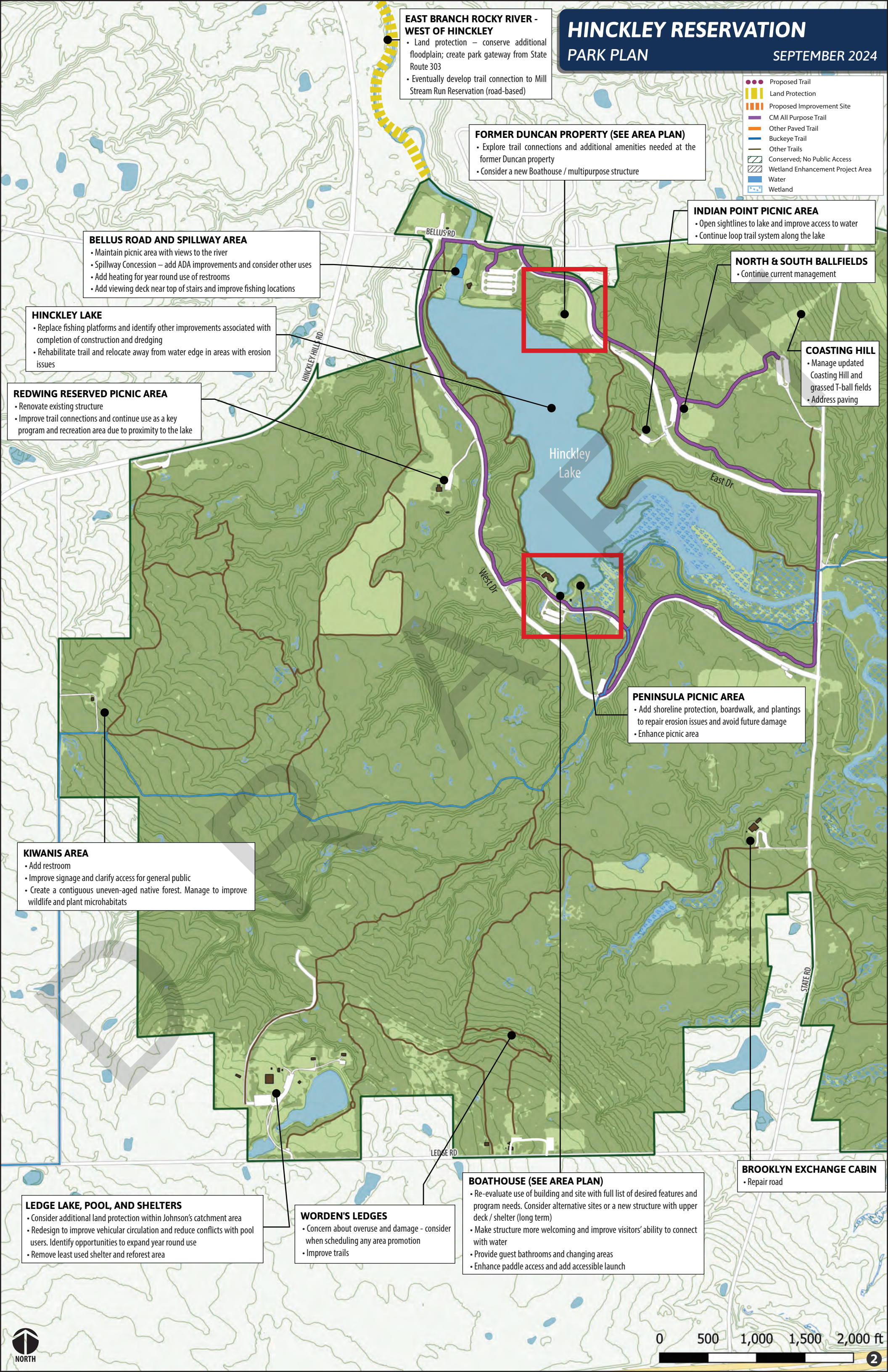
- Renovate existing structure
- Improve trail connections and continue use as a key program and recreation area due to proximity to the lake

HINCKLEY LAKE

- Replace fishing platforms and identify other improvements associated with completion of construction and dredging
- Rehabilitate trail and relocate away from water edge in areas with erosion issues

BELLUS ROAD AND SPILLWAY AREA

- Maintain picnic area with views to the river
- Spillway Concession – add ADA improvements and consider other uses
- Add heating for year round use of restrooms
- Add viewing deck near top of stairs and improve fishing locations



STATE ROAD TRAIL ACCESS

- East side, south of bridge now bicycles and pedestrians only. Add boulders and maintain 10-12' wide surface in future
- Add crosswalk striping at State Road to meet All Purpose Trail

HINCKLEY RESERVATION PARK PLAN

SEPTEMBER 2024

STABLES / MIRROR VALLEY

- Protect high-quality water resources of Mirror Valley utilizing strategies such as stormwater mitigation on the north side of Bellus Road
- Remove bootleg trail leading to Ledges area
- Continue use as hub for resource management equipment storage
- Work with Ohio Department of Natural Resources to stock with Brook Trout

EAST BRANCH ROCKY RIVER - EAST OF HINCKLEY

- Protect the East Branch floodplain and provide habitat for aquatic wildlife
- Pursue connections to Brecksville and potential trail connections parallel to roadways
- Consider regional trail connections (bike/hike/bride) - south (Allardale/-Medina County) through utility easement; potential structure to cross I-271 and north (Valley Parkway) via utility easement and Oviatt Road

Legend

- Proposed Trail
- Land Protection
- Proposed Improvement Site
- CM All Purpose Trail
- Other Paved Trail
- Buckeye Trail
- Other Trails
- Conserved; No Public Access
- Wetland Enhancement Project Area
- Water
- Wetland

WHIPP'S LEDGES AND PICNIC AREA

- Continue current management

TOP O'LEDGES PICNIC AREA

- Continue use for weekend campouts by permit

EXISTING MANAGEMENT CENTER

- Management center needs ADA restroom, staff lunchroom, and office space. Potential to add these functions an addition on south side. Existing building needs new roof and siding. Access drive should also be addressed
- Restore material storage areas
- Consider small trailhead parking area
- Evaluate land protection opportunities along Parker Road

TAKI RESEARCH AREA

- Access and flooding issues present challenges; may be appropriate trail (bike/hike/bride) link; explore rerouting Buckeye Trail through the area
- Adjacent additional land protection opportunities upstream along the East Branch
- Reduce mowed areas
- Add horse trailer parking at bridle trail along Harter Road near Medina Line Road

JUDGE'S LAKE

- Continue to manage former farm fields for grassland bird species
- Consider future trail link to Medina County Park District's North Allardale Park

Medina County Parks

0 500 1,000 1,500 2,000 ft



HINCKLEY RESERVATION

PARK PLAN

SEPTEMBER 2024

- Proposed Trail
- Land Protection
- Proposed Improvement Site
- CM All Purpose Trail
- Other Paved Trail
- Buckeye Trail
- Other Trails
- Conserved; No Public Access
- Wetland Enhancement Project Area
- Water
- Wetland

IRONWOOD GOLF COURSE

- Clubhouse Improvements - reconfigure, kitchen upgrades, Pro Shop upgrades, ADA, finishes, future parking expansion
- Well for Maintenance Shop
- New irrigation system
- Drainage and restoration plan for river / floodplain (#13, 14, 15)
- Continued course improvements, including cleanup of fairway limits and tree work
- Cart path improvements

EASTWOOD RD

- Mitigate erosion by implementing stormwater best practices

RISING VALLEY

- Protection of the high quality resources is the focus; no additional development envisioned
- Continue with planned trail projects to minimize impacts.
- Add trail connection (pedestrian only; potential future APT along Oviatt Road) to Richfield Heritage Preserve
- Long term consider APT along Newton Road to Broadview Road and connection north to Brecksville Reservation
- Encourage stewardship efforts and work with surrounding property owners, including U.S. Fish and Wildlife Service

0 500 1,000 1,500 2,000 ft



NORTH



Hinckley Lake Existing Boathouse

DRAFT

Hinckley Reservation - 1" = 100'





Waterfront Access Trail (paved) merges with existing Lake Loop Trail (natural surface)

Proposed Future Hinckley Boathouse

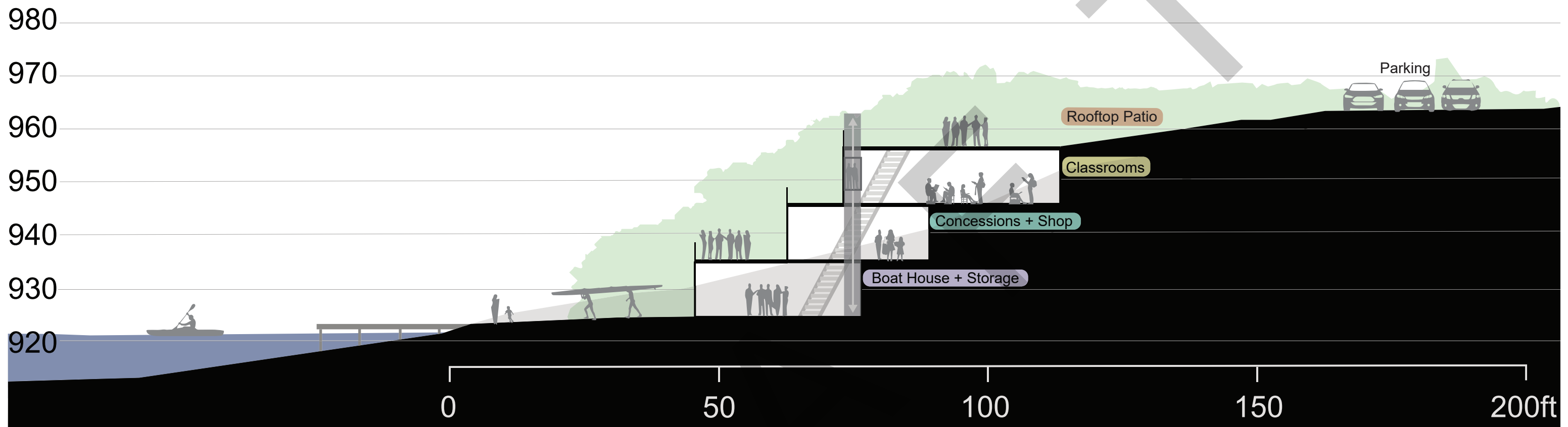
DRAFT

1" = 100'

Hinckley Reservation



Multi-Story Boathouse Section Conceptual Diagram



*Note: This graphic is conceptual and adjacent photograph is a character image, and are not direct representations of the proposed boathouse.