



**TIME TO
EXPLORE**
Cleveland Metroparks

Eastside Trails

Board of Park
Commissioners

September 17, 2020

Trail Planning Efforts

- Regional Focus:

- Cuyahoga Greenways Plan
- Cuyahoga Greenway Partners



CUYAHOGA
greenways

- Eastside Focus:

- Eastside Lakefront Greenway Plan
- Eastside Greenway Plan



- Upcoming NOACA-led regional Transportation for Livable Communities Initiative (TLCI) Studies:

- Downtown Cleveland Transportation Study
- Regional Lakefront Transportation Connections Study
- Metroparks Transportation Connections Study



CUYAHOGA
greenways

- Completed 2019
- Countywide Trail & Bikeway Plan
- 30+ communities participated
- Incorporated Eastside Greenway Plan (2016)



CUYAHOGA
greenways

- **Critical Gaps**

- 12 Projects
- 14 mi.

- **Regional Links**

- 27 Projects
- 132 mi.

- **Key Routes**

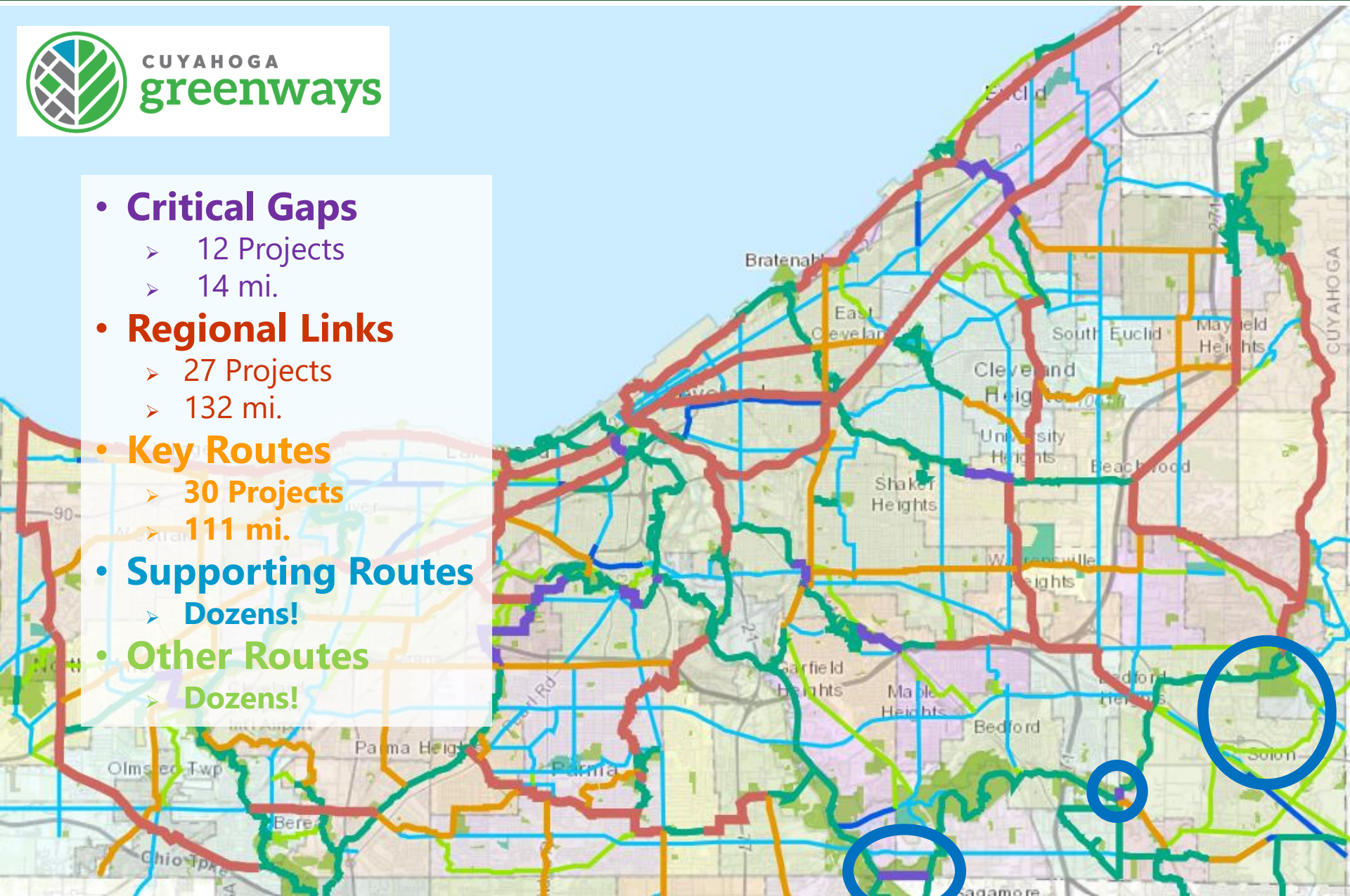
- 30 Projects
- 111 mi.

- **Supporting Routes**

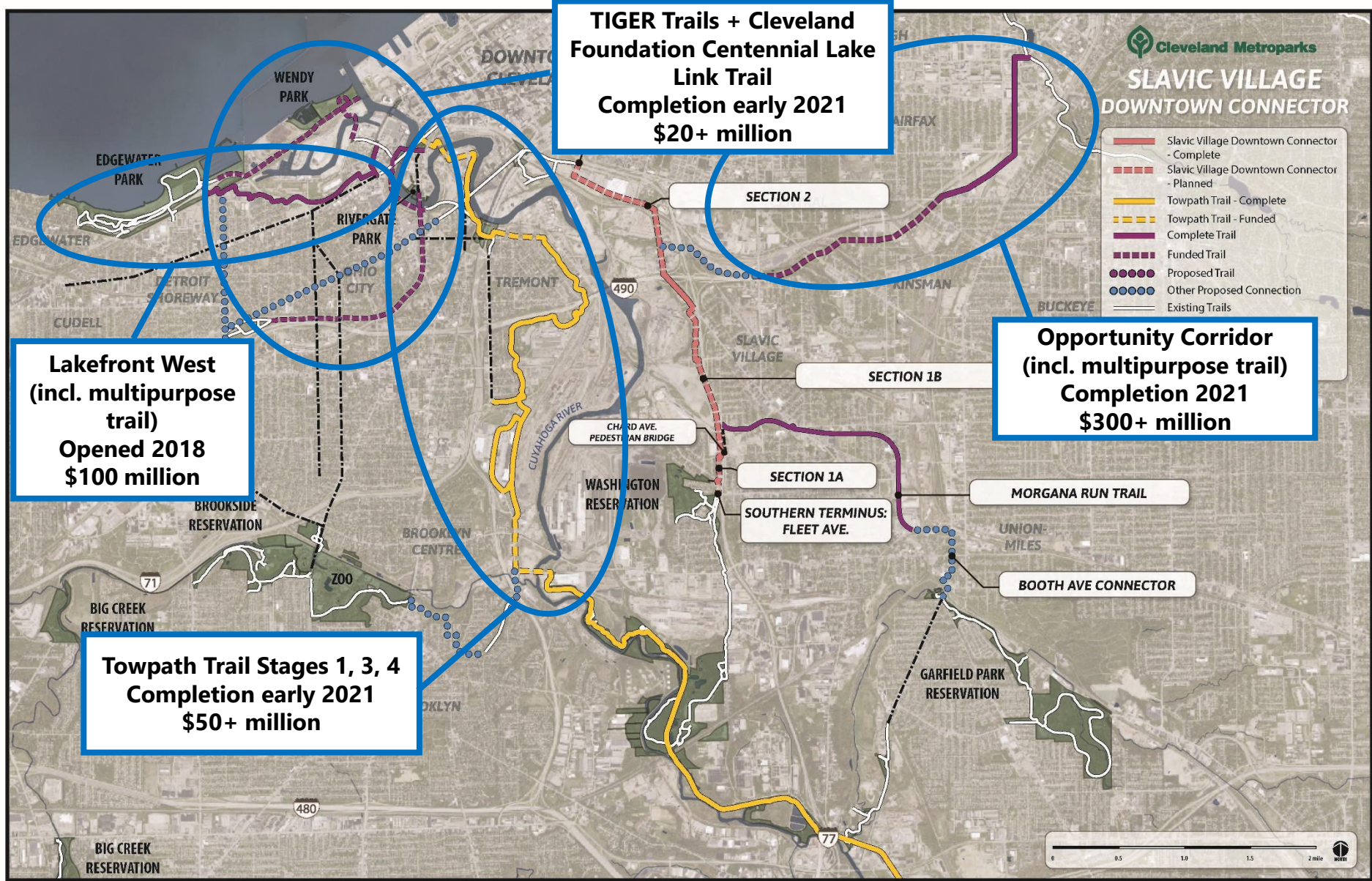
- Dozens!

- **Other Routes**

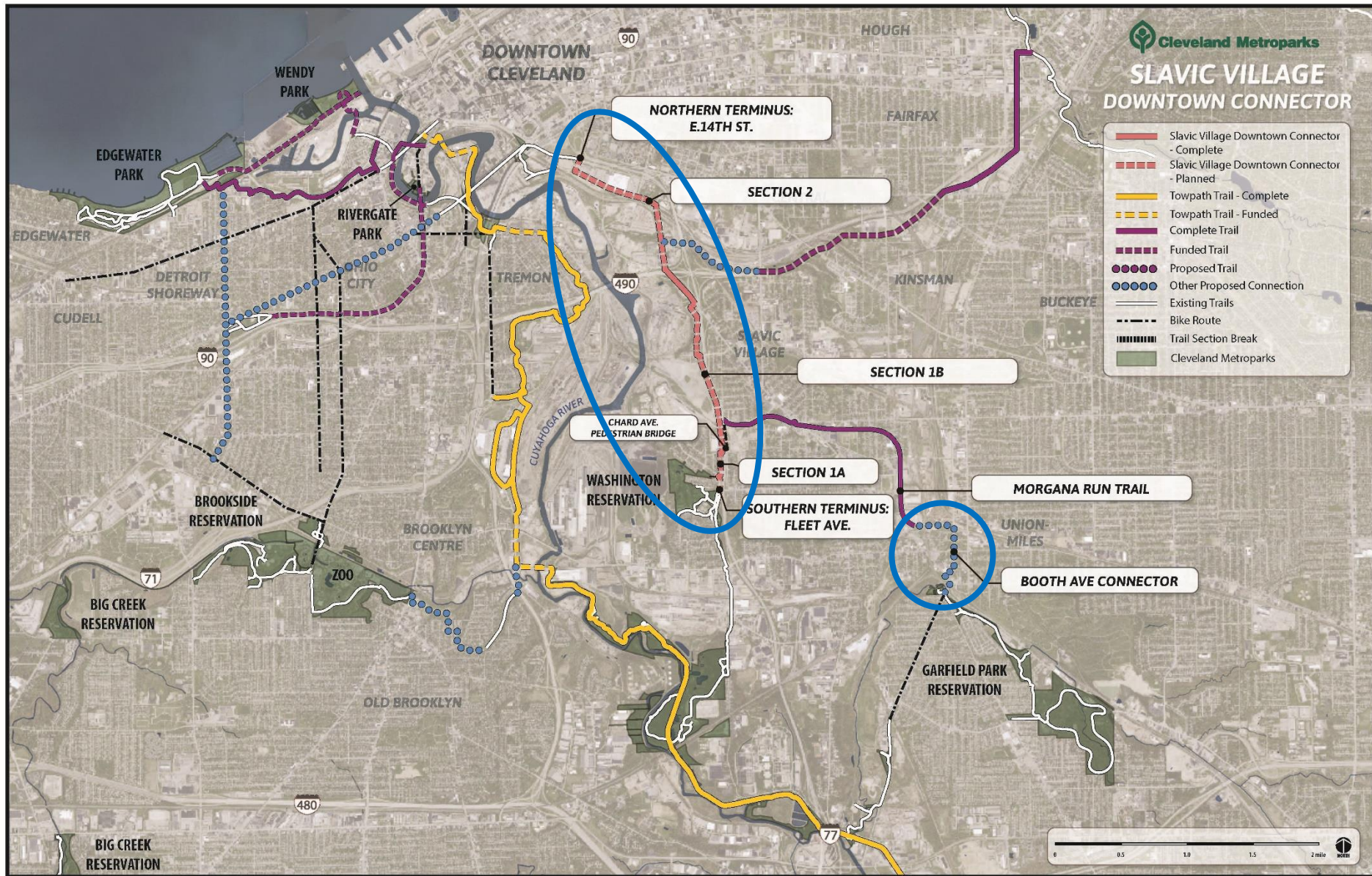
- Dozens!



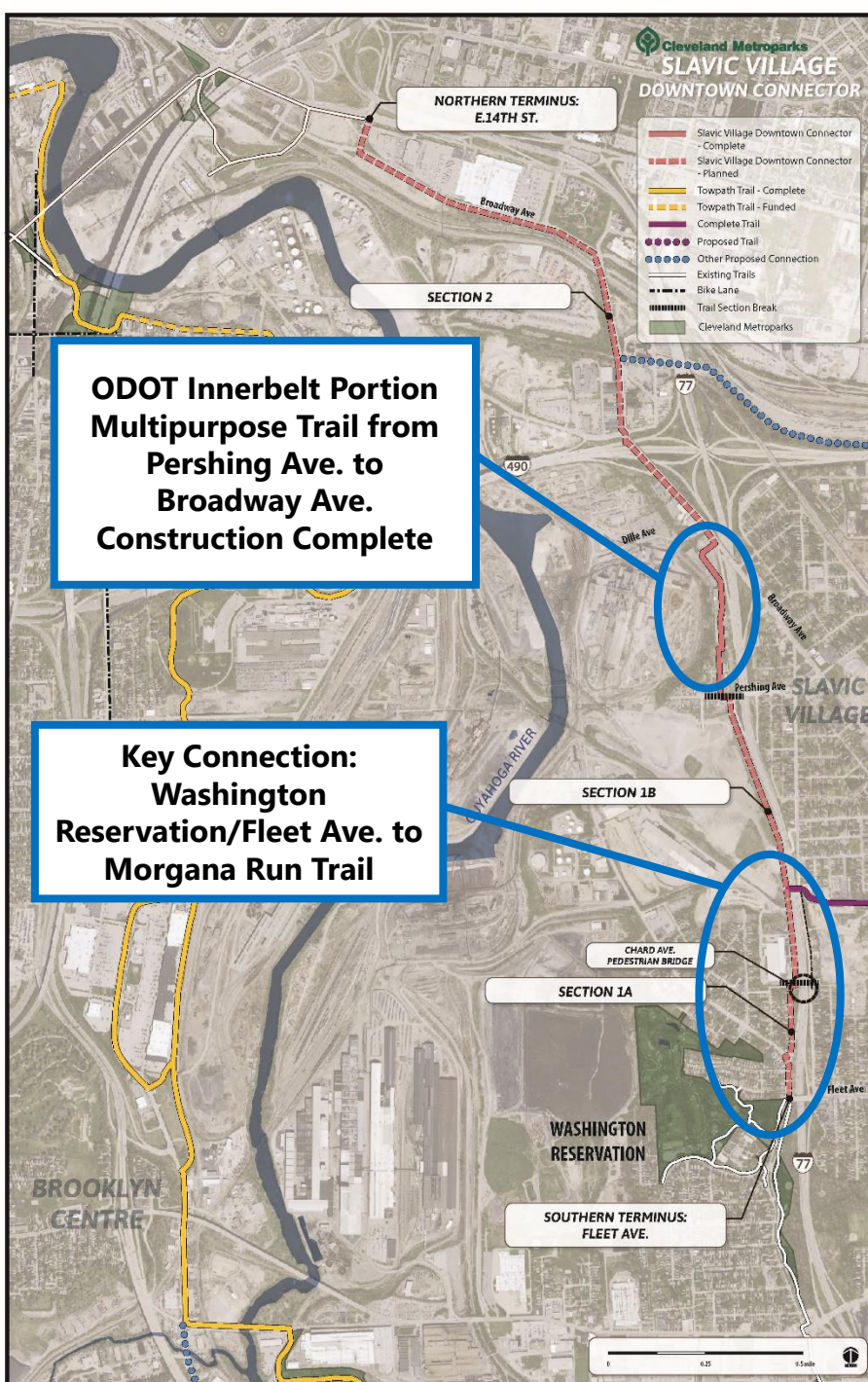
Major Cleveland Trail Projects



Slavic Village Downtown Connector & Booth Ave. Connector



SV Downtown Connector



- Alternatives Evaluation Report for adjacent I-77 shoulder widening and drainage project now due Nov. 2020
- \$200,000 City of Cleveland funding for preliminary engineering Fleet Ave. to Pershing Ave. \$350,000 in detailed design funding committed
- \$1,500,000 in NOACA Transportation Alternatives Program construction funding
- \$50,000 Cleveland Metroparks Commitment to towards design

Booth Connector



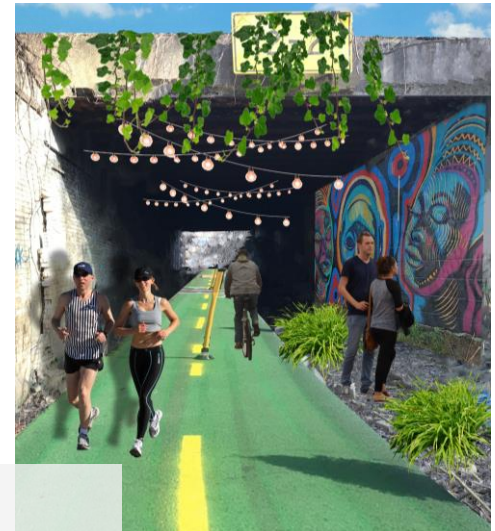
Booth Underpass



Current Conditions



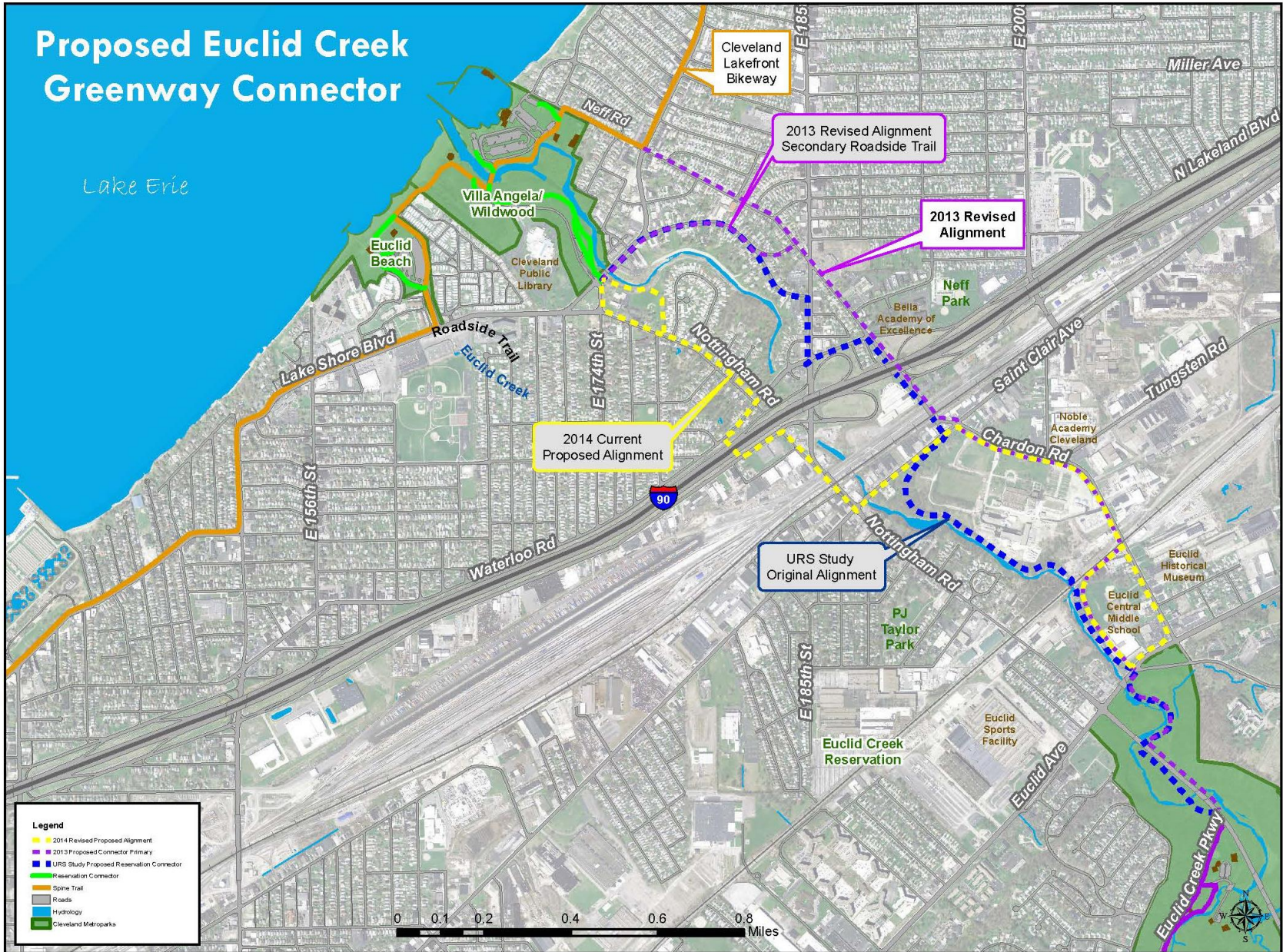
Proposed Booth Underpass



Potential

Rails To Trails Morgana Run Trail Extension Study

Euclid Creek Greenway



Euclid Creek Greenway

Euclid Creek Reservation
 Euclid Creek Greenway - Phase I: Euclid Creek Parkway & Highland Road
 Signal Project Application - ODOT Highway Safety Improvement Program 2020

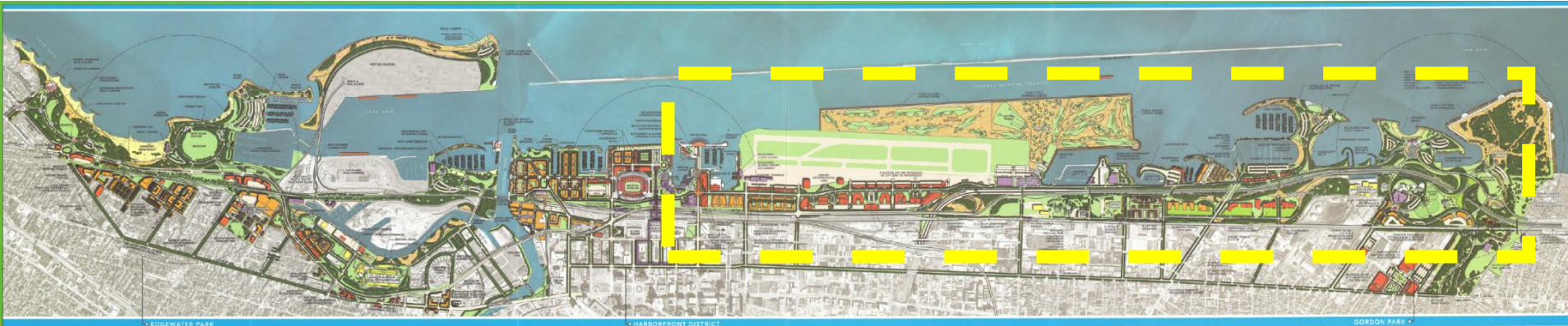


Conceptual Master Plan

Euclid Creek Middle School
 Euclid Creek Reservation



City of Cleveland Waterfront District Plan - 2004



envison a city where one can easily reach down and touch the water.



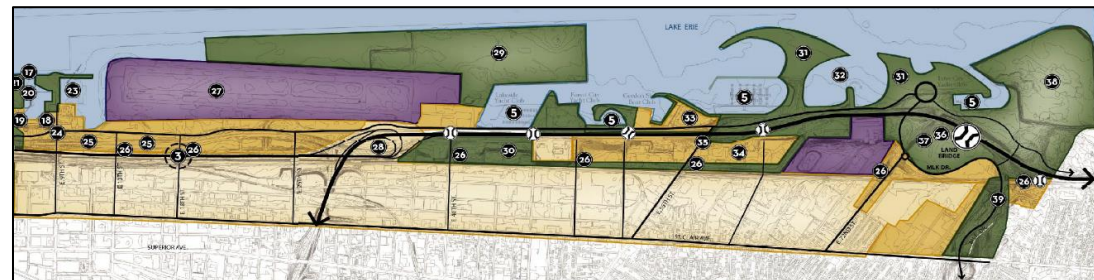
imagine a place where living, working and playing are linked to the unique natural resource we know as lake erie.

consider the possibility that this resource can be experienced along a magnificent, continuous waterfront park system, from vibrant public spaces, fresh-water beaches or from tree-lined, pedestrian-scaled boulevards.

believe that with our collective public energies we can realize this vision, investing in this priceless asset to generate an immeasurable return not only for ourselves, but for generations to come.



cleveland waterfront district plan



Lakefront Greenway & Downtown Connector Study - 2015

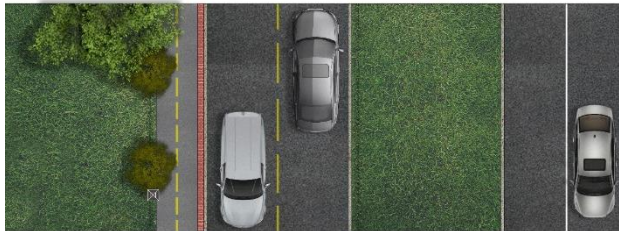


North Marginal Trail – E. 9th to E. 55th St.

Existing



Proposed



Proposed





**TIME TO
EXPLORE**
Cleveland Metroparks

Eastside Trails

Board of Park
Commissioners

September 17, 2020