



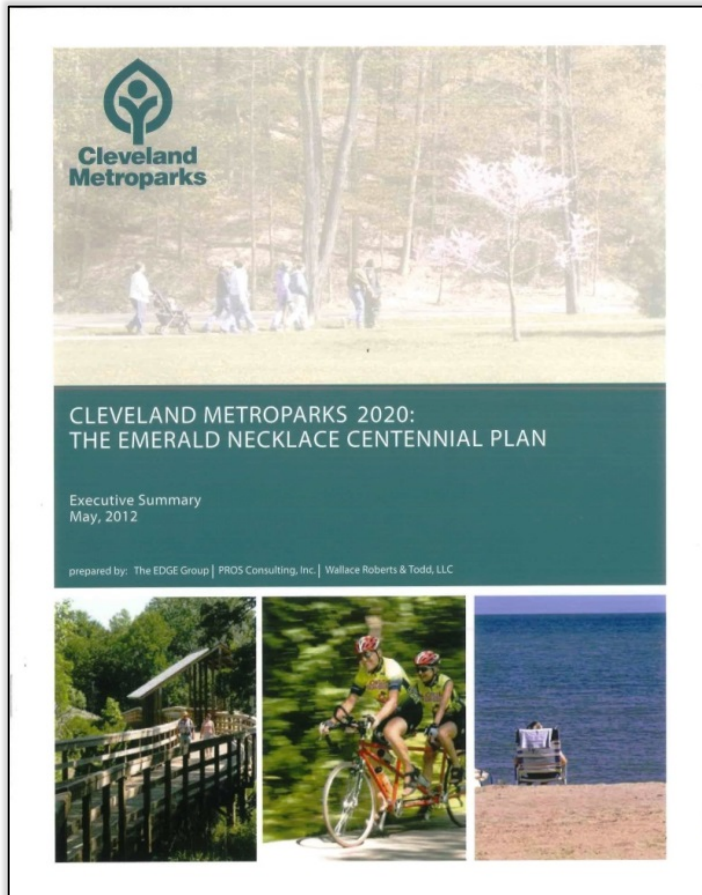
TIME TO EXPLORE

Cleveland Metroparks

Mastick Road Connector Trail

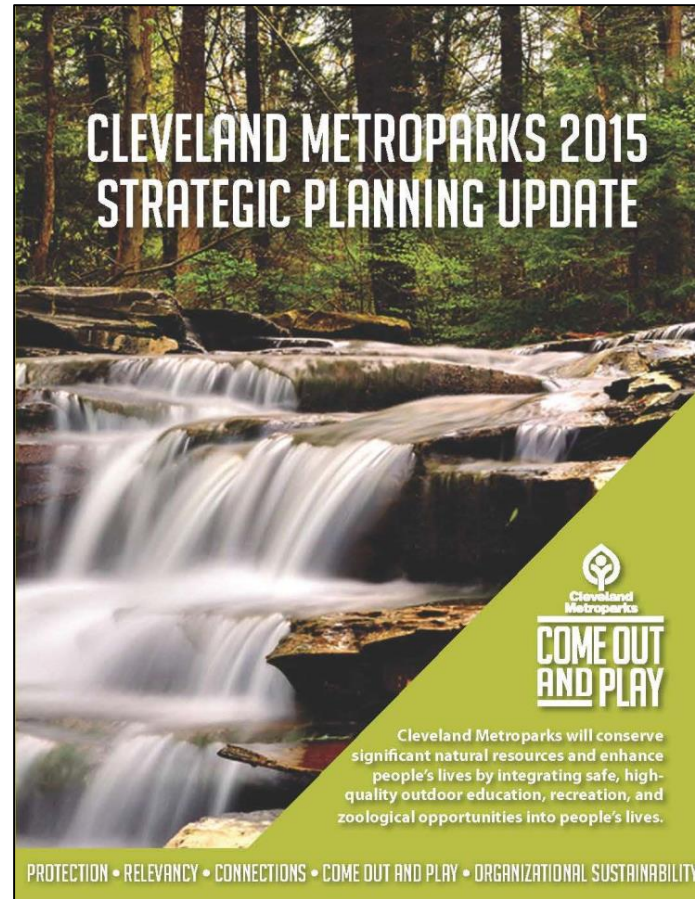
Board of Park Commissioners
January 15, 2020

Cleveland Metroparks 2020 Centennial Plan & 2015 Strategic Plan Update



One of Seven Key Directions:

Regional Greenway System: Fill gaps within the Emerald Necklace, link to adjacent systems, and provide open space and recreational resources to underserved areas.



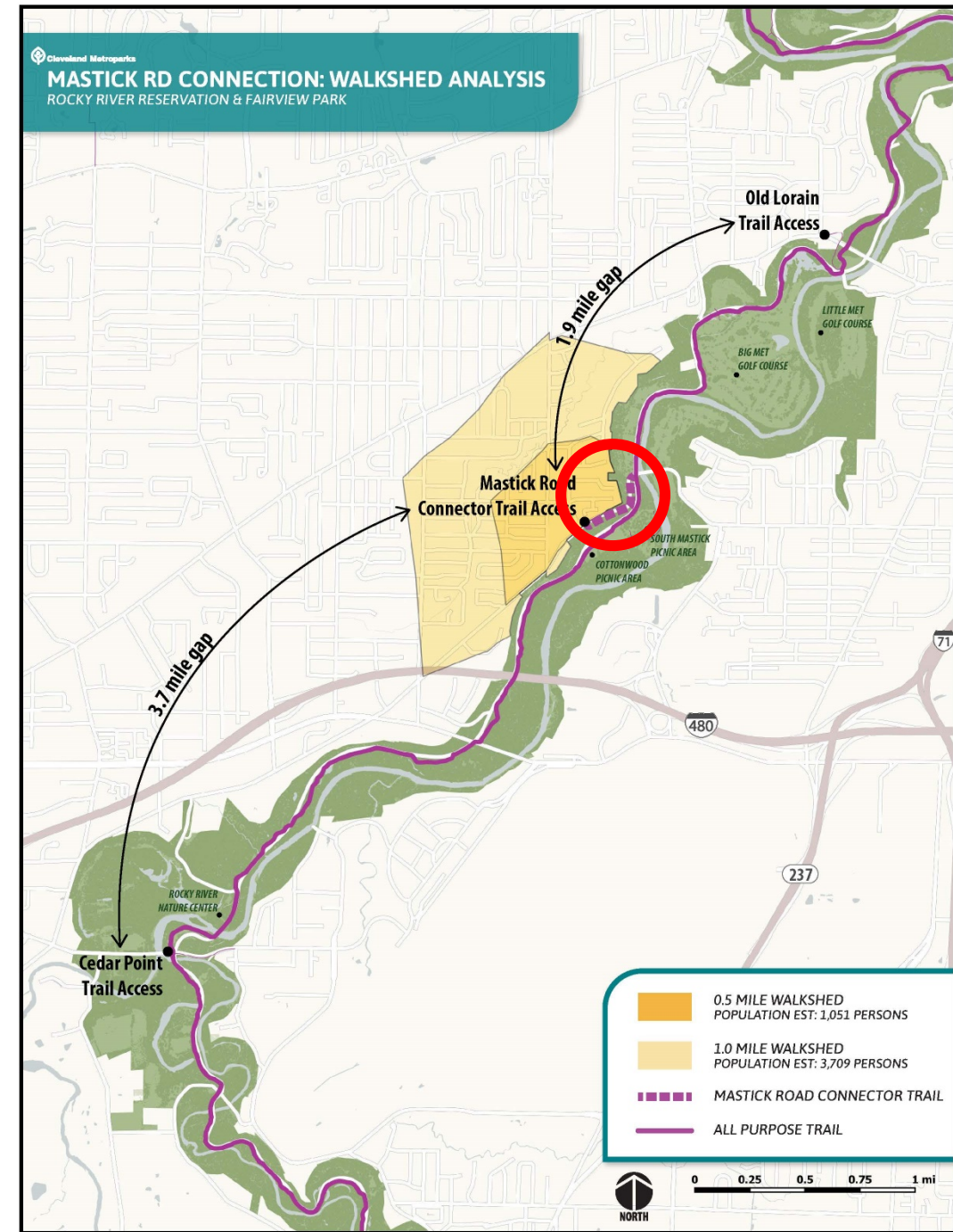
One of Five Refined Goals:

Connections: Advance trails that connect with local, state and regional trails

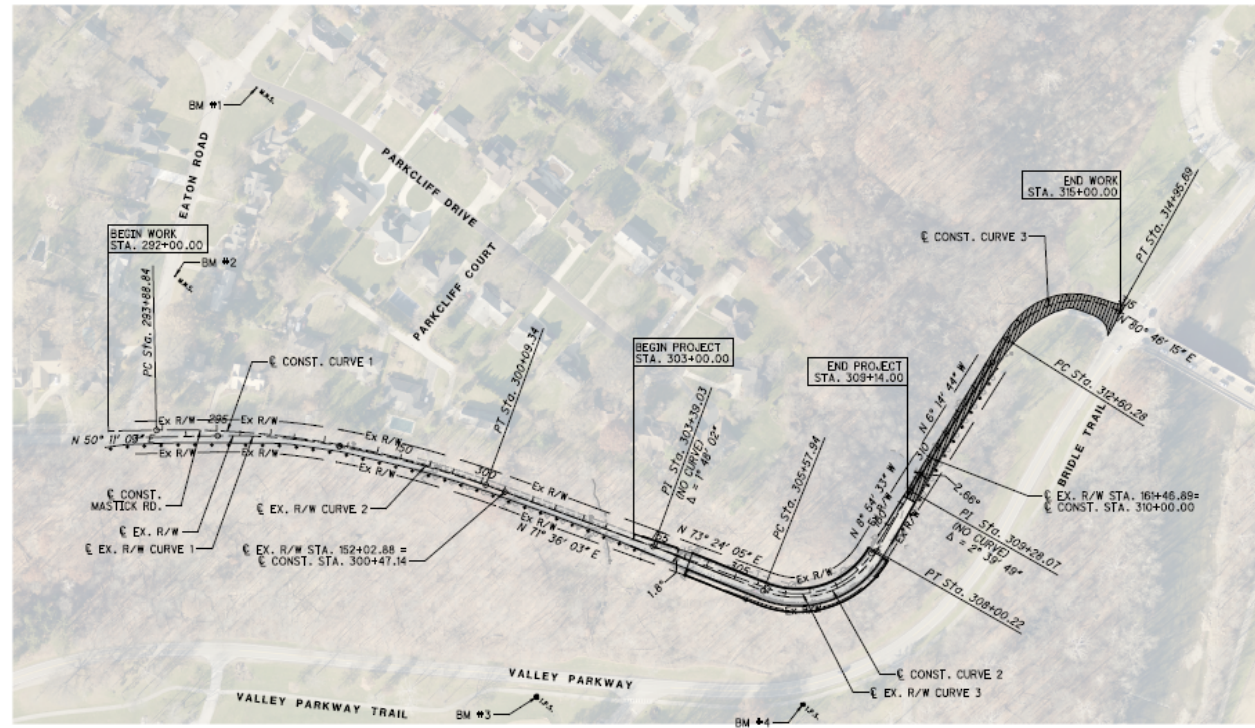


Mastick Road Bridge

- 1975 – 388' Mastick Bridge side-hill structure built
- 2014 – Cuyahoga County Department of Public Works begins study of bridge replacement/rehabilitation
 - Fairview Park and Cleveland Metroparks request bicycle and pedestrian access
 - 7 alternatives studied
- 2017 – Preferred alternative: major rehabilitation with barrier-protected trail
- 2019 – County issues bridge construction RFP; trail approaches to be separate project
- 2020 – Bridge construction estimated to occur within 2020; temporary barricades on bridge deck trail until approaches are built



Mastick Road Bridge



SCHEMATIC PLAN
MASTICK ROAD (C.R. 101)
 60' R/W

LEGEND
 MNS = MAG NAIL SET
 IPS = IRON PIN SET

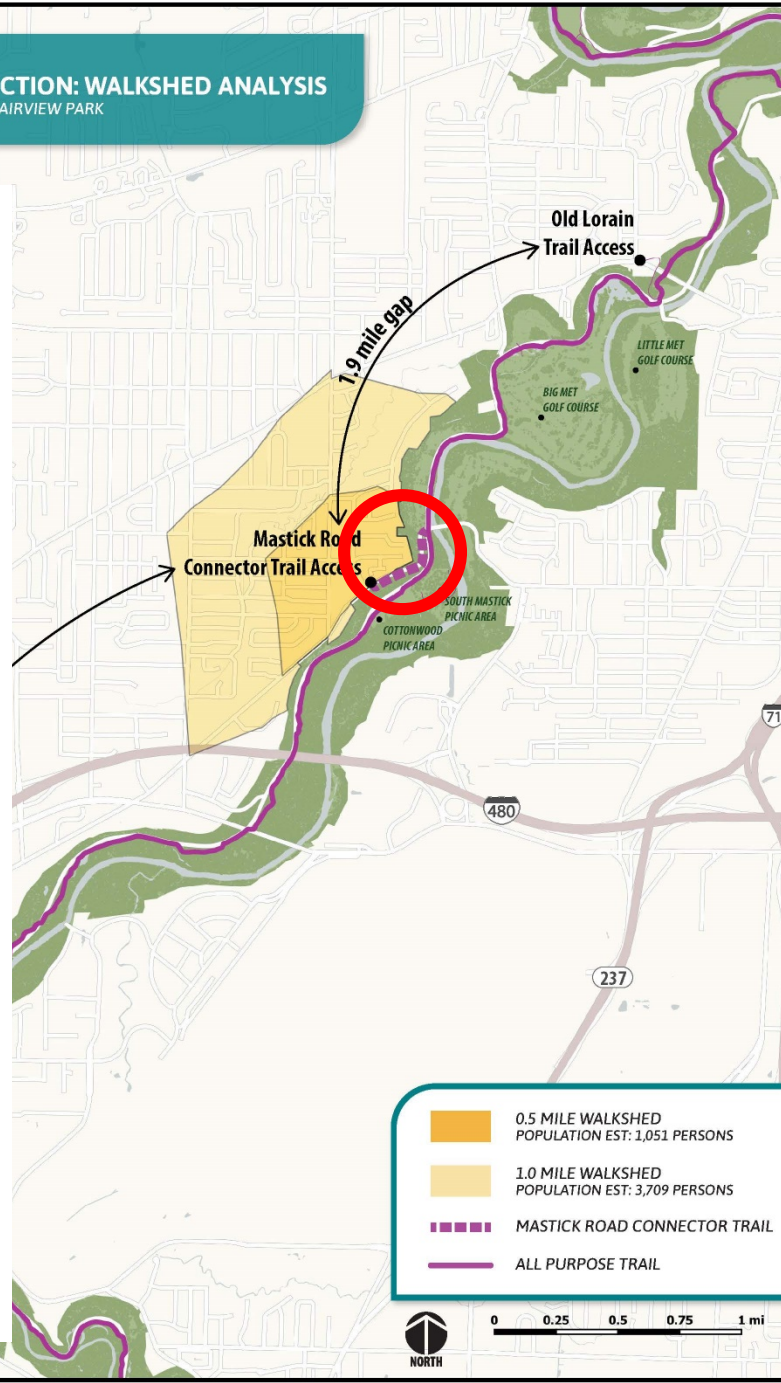
Curve/Section	Station	Angle	Distance	Radius	Tangent	Offset	Other
EX. R/W CURVE 1	P.I. Sta. 147+72.33	$\Delta = 12^\circ 07' 00''$ (RT)	$Dc = 5^\circ 21' 37''$	$R = 1,068.92'$	$T = 113.45'$	$L = 226.05'$	$E = 6.00'$
EX. R/W CURVE 2	P.I. Sta. 150+44.29	$\Delta = 9^\circ 18' 00''$ (RT)	$Dc = 2^\circ 55' 32''$	$R = 1,958.41'$	$T = 159.29'$	$L = 317.88'$	$E = 6.47'$
EX. R/W CURVE 3	P.I. Sta. 158+50.30	$\Delta = 77^\circ 50' 47''$ (LT)	$Dc = 35^\circ 35' 31''$	$R = 1,958.41'$	$T = 130.00'$	$L = 216.72'$	$E = 29.42'$
CONST. CURVE 1	P.I. Sta. 297+02.76	$\Delta = 21^\circ 25' 00''$ (RT)	$Dc = 3^\circ 27' 06''$	$R = 1,660.00'$	$T = 313.81'$	$L = 620.49'$	$E = 29.42'$
CONST. CURVE 2	P.I. Sta. 307+05.35	$\Delta = 62^\circ 18' 38''$ (LT)	$Dc = 33^\circ 58' 23''$	$R = 168.65'$	$T = 147.41'$	$L = 242.28'$	$E = 55.34'$
CONST. CURVE 3	P.I. Sta. 314+07.42	$\Delta = 87^\circ 00' 58''$ (RT)	$Dc = 36^\circ 57' 54''$	$R = 155.00'$	$T = 147.13'$	$L = 235.40'$	$E = 58.71'$

PRIMARY PROJECT CONTROL MONUMENTATION

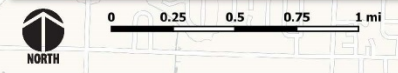
POINT NO.	STATE PLANE GRID (US FEET)		PROJECT COORDINATES (GROUND) (US FEET)		ELEVATION	STATION	OFFSET	DESC.
	NORTHING	EASTING	NORTHING	EASTING				
BM # 1	645227.148	2146314.476	645262.888	2146314.811	748.250	295+37.50	8.37' RT	MNS
BM # 2	644860.897	2146174.125	644902.868	2146214.666	748.961	294+24.41	284.03' RT	MNS
BM # 3	644869.508	2147481.528	644711.117	2147622.132	636.401	302+32.35	335.18' RT	IPS
BM # 4	644864.328	2147874.636	645008.556	2148018.166	635.171	308+27.14	188.55' RT	IPS

PROJECT ADJUSTMENT FACTOR = 1.000065474

SCHEMATIC PLAN
MASTICK ROAD (C.R. 101)
2/66

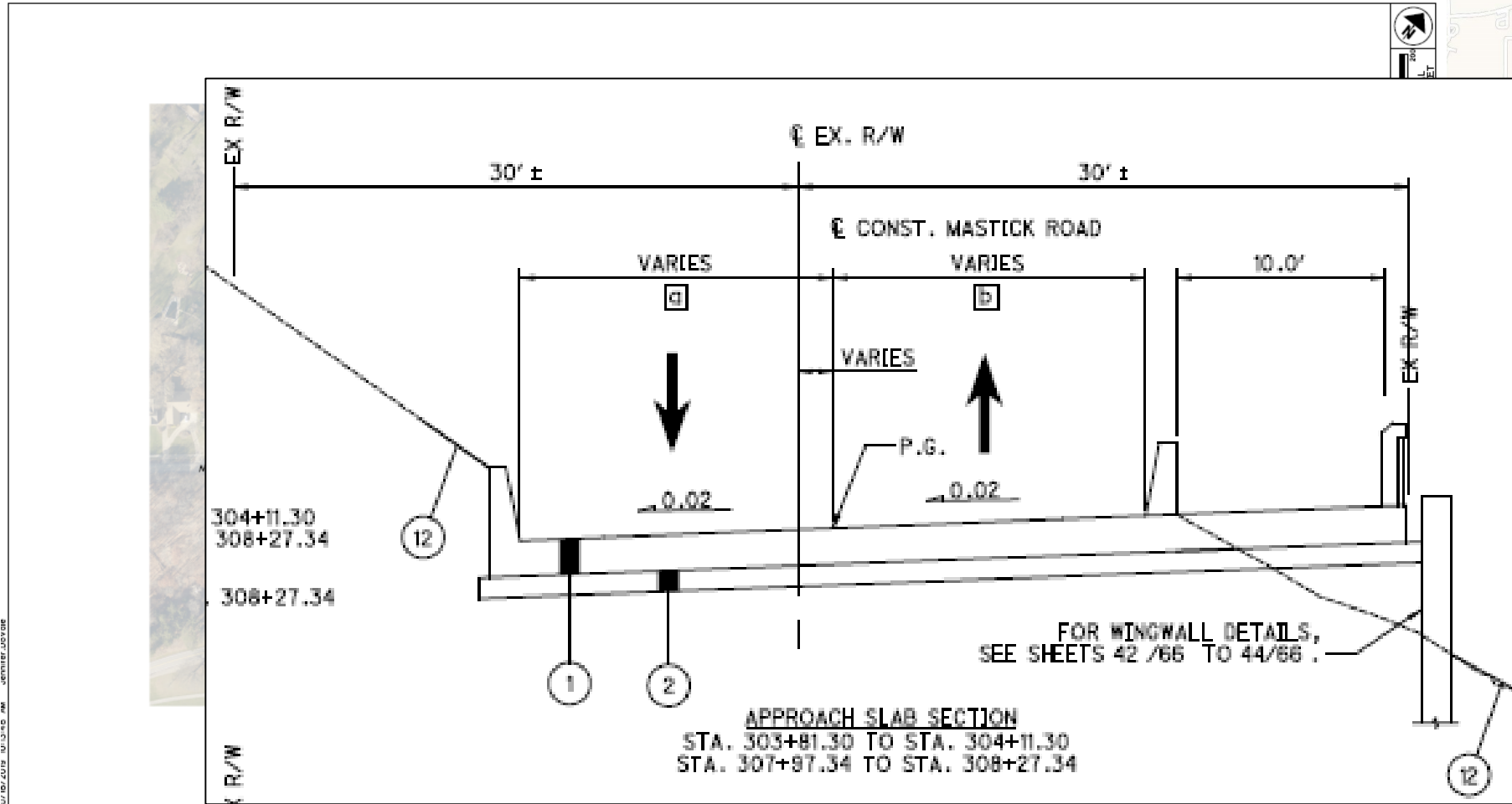


- 0.5 MILE WALKSHED
POPULATION EST: 1,051 PERSONS
- 1.0 MILE WALKSHED
POPULATION EST: 3,709 PERSONS
- MASTICK ROAD CONNECTOR TRAIL
- ALL PURPOSE TRAIL



Mastick Road Bridge

Cleveland Metroparks
MASTICK RD CONNECTION: WALKSHED ANALYSIS
 ROCKY RIVER RESERVATION & FAIRVIEW PARK



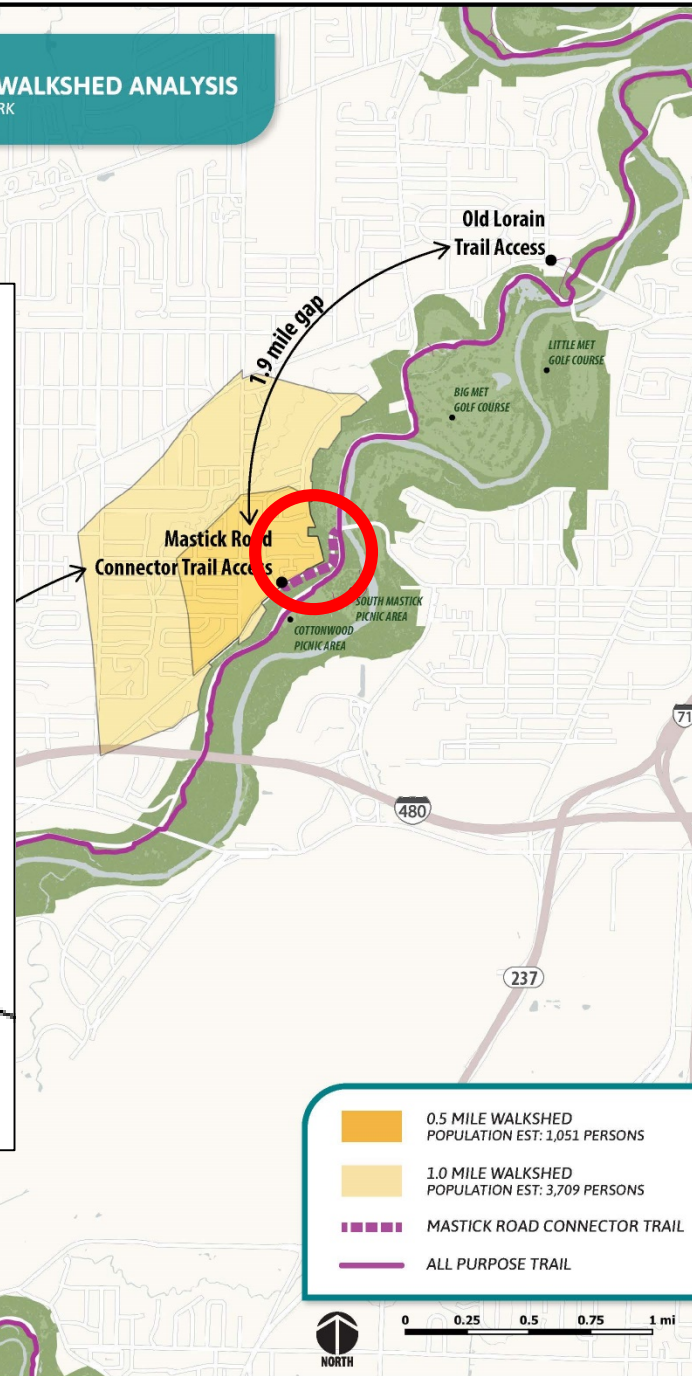
APPROACH SLAB SECTION
 STA. 303+81.30 TO STA. 304+11.30
 STA. 307+87.34 TO STA. 308+27.34

PRIMARY PROJECT CONTROL MONUMENTATION									
POINT NO.	STATE PLANE GRID (US FEET)		PROJECT COORDINATES (GROUND) (US FEET)						
	NORTHING	EASTING	NORTHING	EASTING	ELEVATION	STATION	OFFSET	DESC.	
BM# 1	845227.149	2146314.416	845268.888	2146318.311	748.259	285+32.59	837.74'	L	MARKS
BM# 2	844860.897	2146314.125	844902.868	2146318.666	748.961	294+24.41	284.03'	L	MARKS
BM# 3	844869.508	2147481.528	844711.117	2147622.132	636.401	302+32.35	335.18'	R	TPINS
BM# 4	844864.328	2147874.836	845008.556	2148018.166	635.171	308+27.14	188.55'	R	TPINS

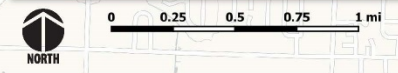
PROJECT ADJUSTMENT FACTOR = 1.000065474

EX. R/W CURVE 1	EX. R/W CURVE 2	EX. R/W CURVE 3	CONST. CURVE 1	CONST. CURVE 2	CONST. CURVE 3
P.I. Sta. 147+72.33	P.I. Sta. 150+44.29	P.I. Sta. 158+50.30	P.I. Sta. 297+02.76	P.I. Sta. 307+05.35	P.I. Sta. 314+07.42
$\Delta = 12^\circ 07' 00''$ (RT)	$\Delta = 9^\circ 18' 00''$ (RT)	$\Delta = 77^\circ 50' 47''$ (LT)	$\Delta = 21^\circ 25' 00''$ (RT)	$\Delta = 82^\circ 18' 38''$ (LT)	$\Delta = 87^\circ 00' 58''$ (RT)
$Dc = 5^\circ 21' 37''$	$Dc = 2^\circ 55' 32''$	$Dc = 35^\circ 35' 31''$	$Dc = 3^\circ 27' 06''$	$Dc = 33^\circ 58' 23''$	$Dc = 36^\circ 57' 54''$
$R = 1,068.92'$	$R = 1,958.41'$	$R = 160.98'$	$R = 1,660.00'$	$R = 168.65'$	$R = 155.00'$
$T = 113.45'$	$T = 159.29'$	$T = 130.00'$	$T = 113.45'$	$T = 147.41'$	$T = 147.13'$
$L = 226.05'$	$L = 317.88'$	$L = 218.72'$	$L = 620.49'$	$L = 242.28'$	$L = 235.40'$
$E = 6.00'$	$E = 6.47'$	$E = 45.94'$	$E = 29.42'$	$E = 55.34'$	$E = 58.71'$
$C = 225.63'$	$C = 317.53'$	$C = 202.28'$	$C = 816.89'$	$C = 221.98'$	$C = 213.42'$
C.B. = N 56° 14' 33" E	C.B. = N 68° 57' 03" E	C.B. = N 32° 40' 40" E	C.B. = N 60° 53' 33" E	C.B. = N 32° 14' 46" E	C.B. = N 37° 15' 46" E
			$eMAX = NO$ WORK	$eMAX = 0.020$	$eMAX = NO$ WORK

MASTICK (C.R.)
 2/66

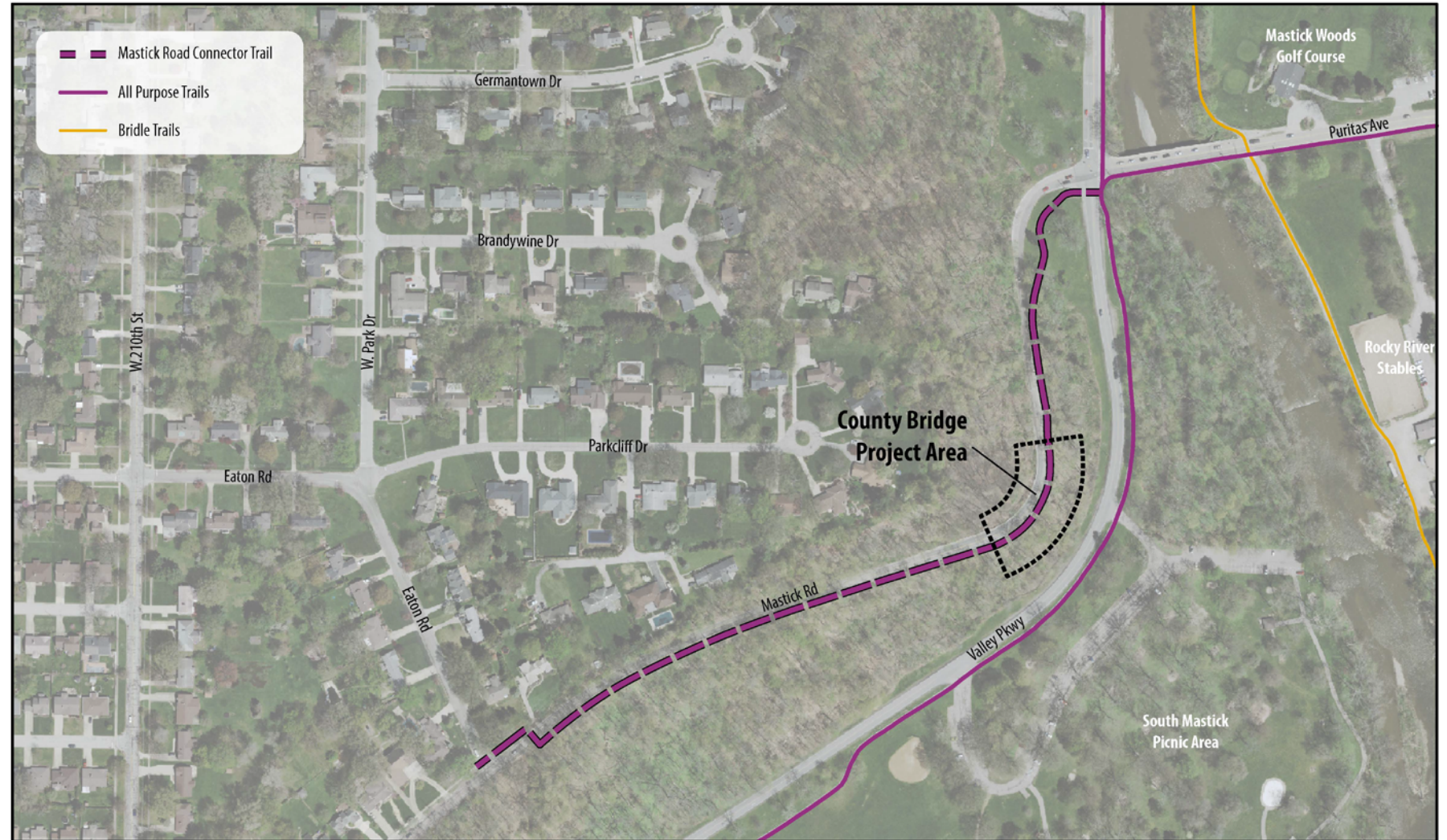


- 0.5 MILE WALKSHED
POPULATION EST: 1,051 PERSONS
- 1.0 MILE WALKSHED
POPULATION EST: 3,709 PERSONS
- MASTICK ROAD CONNECTOR TRAIL
- ALL PURPOSE TRAIL



Mastick Road Connector Trail

- Clean Ohio Trails Fund request for \$500,000 of estimated \$1.1 million construction cost
- ±1,650' trail approaches to bridge deck
- If awarded, construction anticipated for 2021/2022



Mastick Road Connector Trail

January 2020

Rocky River Reservation





Mastick Road
Connector
Trail
Conceptual
Rendering

R. Zimmerman '17