



CUYAHOGA
greenways

Cuyahoga Greenway Partners
Countywide Initiative for Trails & Bikeways

Cleveland Metroparks Board of Park Commissioners
Update
March 18, 2021



VISION:

A completed, countywide network of off-road trails and on-road, low-stress pedestrian and bicycle facilities accessible for persons of all ages and abilities for ***transportation, exercise and enjoyment***.

- Building off Eastside Greenway
- Funded through NOACA's TLCI Program
- Twenty (20) Community Meetings
- 43 (of 59) Communities participating



CORE TEAM

- Cuyahoga County Planning Commission
- Cleveland Metroparks
- NOACA

Consultant Team:

- SmithGroup
- WSP
- Guide

STEERING COMMITTEE

Representatives from each community in the County invited

PUBLIC WORKSHOPS & SURVEYS

- 4 Rounds of meetings
- Two surveys

PROJECT TEAM

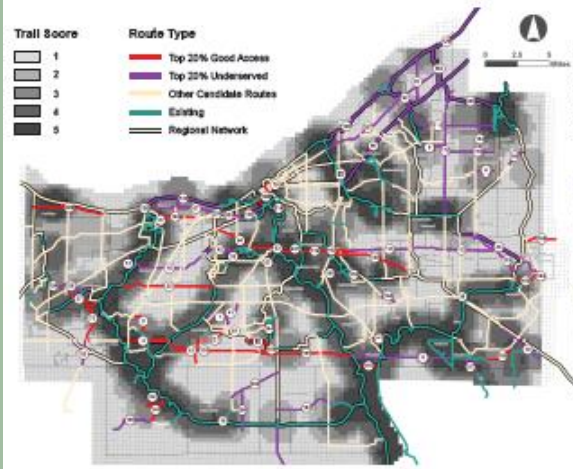
- RTA
- NEORS
- GCRTA
- Bike Cleveland
- City of Cleveland Planning Commission
- West Creek Conservancy
- The Trust for Public Land
- Cleveland Neighborhood Progress
- Greater Cleveland Partnership

TECHNICAL TEAM

- City of Broadview Heights
- City of Cleveland Office of Sustainability
- City of Cleveland Traffic Engineering
- City of Lakewood
- City of Shaker Heights
- Cuyahoga County Public Works
- Cuyahoga County Dept. of Sustainability
- Cuyahoga Greenway Partners
- Cuyahoga River Restoration
- Cuyahoga Soil & Water Conservation District
- Cuyahoga Valley National Park
- First Suburbs Consortium
- LAND studio
- National Park Service
- ODOT District 12
- Rails to Trails Conservancy
- UH Bikes
- Western Reserve Land Conservancy



1\ TRAIL ACCESS FACTOR

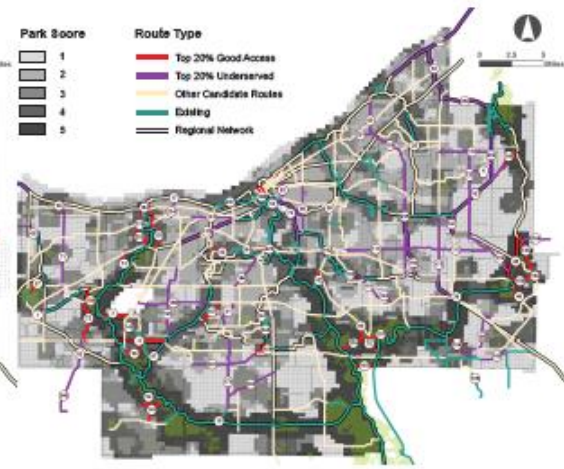


DATA SOURCE: ACS 2016 + GREENWAYS PARTNER DATA SET

Sub-Factors

- Trail Density

2\ PARK ACCESS FACTOR

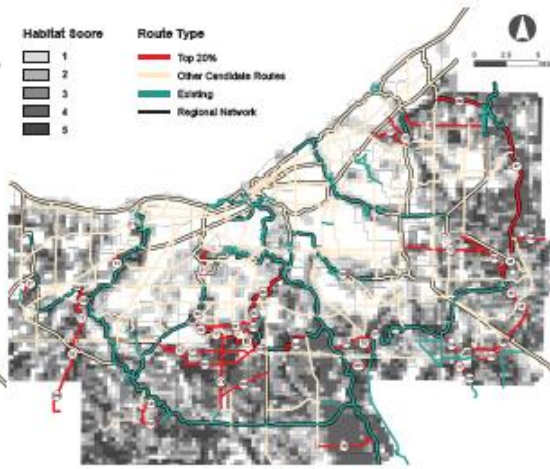


DATA SOURCE: ACS 2016 + CPC LAND USE

Sub-Factors

- Acres of Park per Person

3\ HABITAT FACTOR

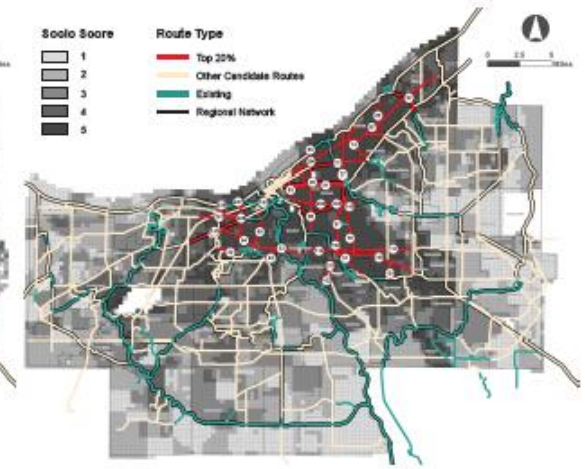


DATA SOURCE: NATIONAL LANDCOVER DATASET 2011 GREENPRINT STREAMS

Sub-Factors

- Patch Size (33%)
- Riparian Corridor Density (33%)
- Potential Habitat Proximity (33%)

4\ SOCIOECONOMIC FACTOR

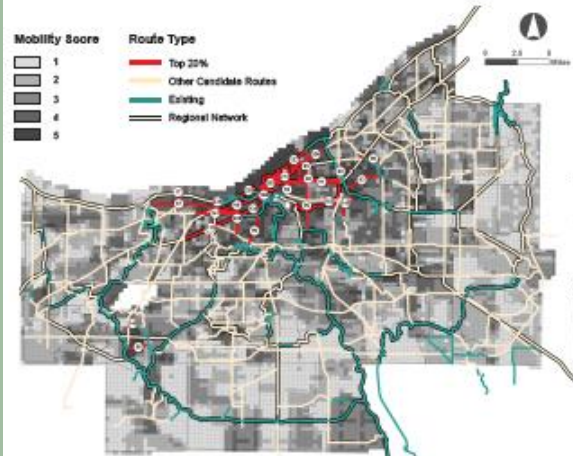


DATA SOURCE: ACS 2016

Sub-Factors

- Median Income (33%)
- Poverty Rate (33%)
- Unemployment Rate (33%)

5\ PERSONAL MOBILITY FACTOR

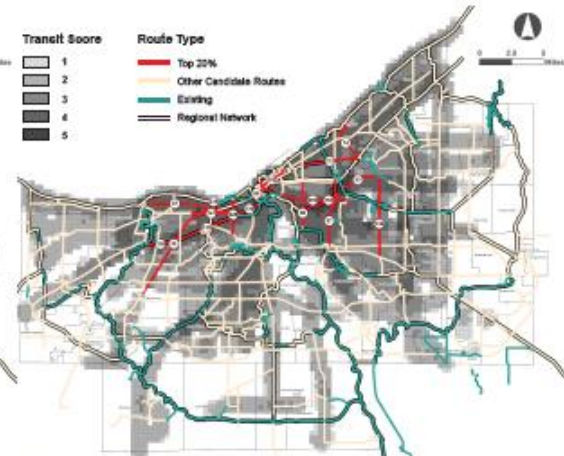


DATA SOURCE: ACS 2016 + GREENWAYS PARTNER DATA SET

Sub-Factors

- Car Ownership (50%)
- Non-motorized Commute (50%)

6\ TRANSIT FACTOR

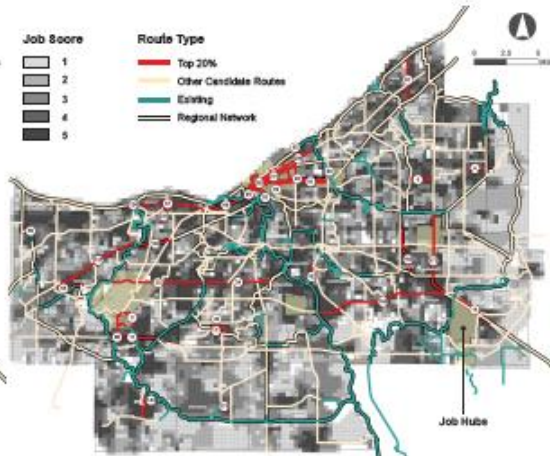


DATA SOURCE: ACS 2016 + GREENWAYS PARTNER DATA SET

Sub-Factors

- 1/2 Mile Bus Stop Density (33%)
- 1/2 Mile Rail Stations (33%)
- 1/2 Proximity Corridors (33%)

7\ JOB CENTERS FACTOR

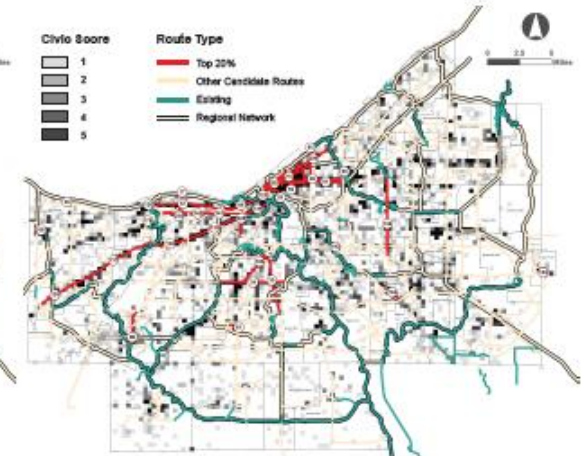


DATA SOURCE: ACS 2016 + GREENWAYS PARTNER DATA SET

Sub-Factors

- Job Numbers

8\ COMMERCIAL-CIVIC FACTOR



DATA SOURCE: ACS 2016 + GREENWAYS PARTNER DATA SET

Sub-Factors

- Retail Destinations (33%)
- Cultural Destinations (33%)
- Educational Destinations (33%)

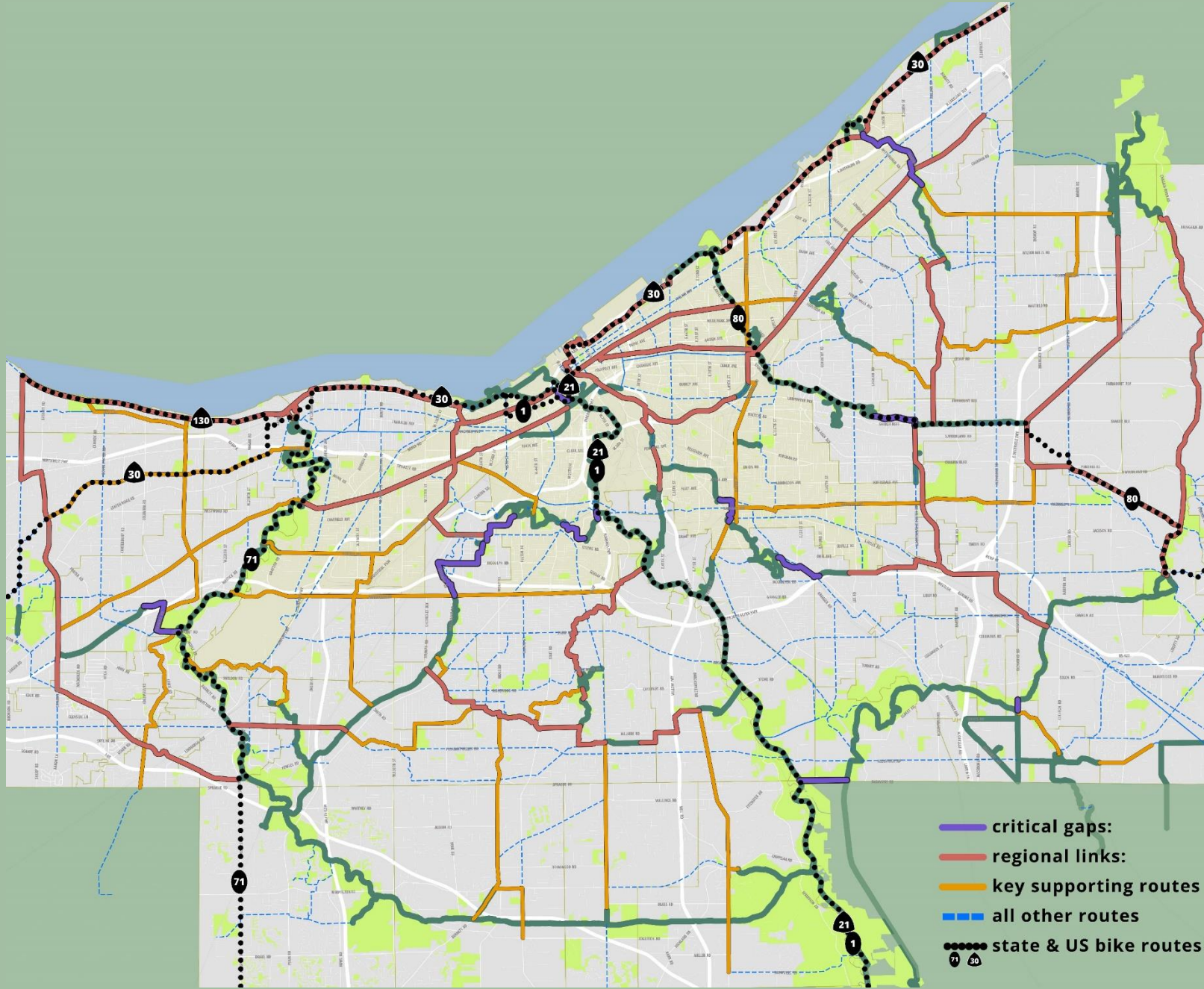
Plan Priorities

1. Critical Gaps
(12 projects & 14 miles)

2. Regional links
(27 projects & 122 miles)

3. Key Supporting Routes
(30 projects & 107 miles)

= 69 projects, 243 miles
(40% of the 634 miles of future routes in the overall network)





Cuyahoga Greenway Partners – *Driving Implementation*

1. Raising Awareness: Community Leaders & Public

- **New Website**
- Community Outreach & Communications

2. Project Collaboration and Assistance

- Facilitation, Guidance, Training

3. Advocacy

- Integration into New State Trail Plan
- State Legislative Trails Caucus
- Local & State Policies
- **Funding**

- Bike Cleveland
- Cleveland City Planning Commission
- Cleveland Metroparks
- Cuyahoga County Department of Public Works
- Cuyahoga County Planning Commission
- Cuyahoga Valley National Park/National Park Service
- Greater Cleveland Regional Transit Authority
- Northeast Ohio Areawide Coordinating Agency
- Northeast Ohio Regional Sewer District
- ODOT
- Rails-to-Trails Conservancy
- Trust for Public Land
- *CCPC/Mayors & Managers - initially

FUNDING



Ongoing funding programs:

- Clean Ohio Trails Fund
- Transportation for Livable Communities Initiative (TLCI) - planning and implementation
- State Capital

New or Discretionary Funding Opportunities:

- BUILD Grant (Planning and/or Construction)
- Potential Stimulus Funding
- New Transportation Act/Earmarks

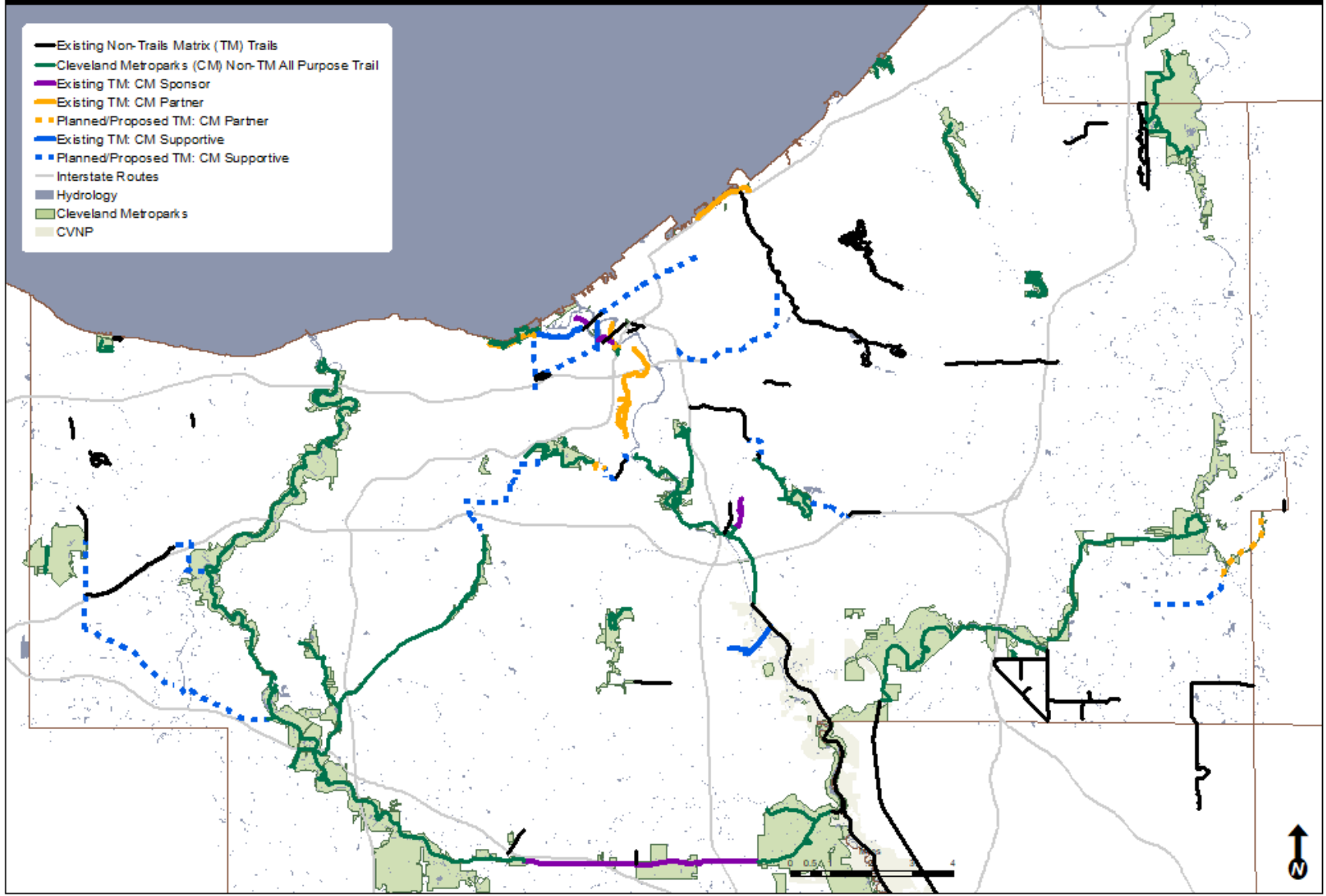
Project Collaboration URGENT for 2021 Funding Opportunities

CONNECTIONS

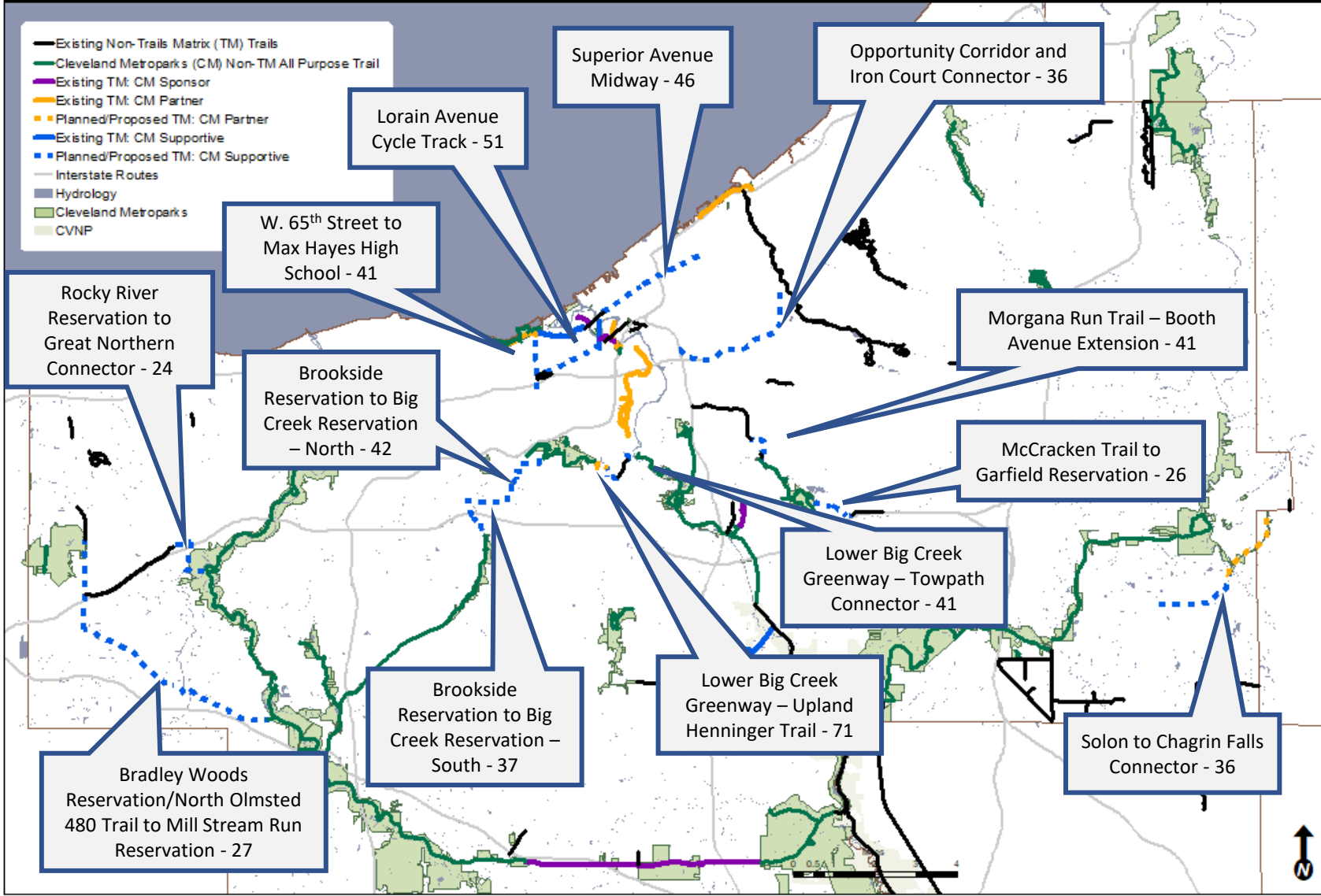


Advance connections and trail systems that complete the Emerald Necklace and, in partnership with other agencies and communities, connect with local, state and regional trail networks, communities and places of interest.

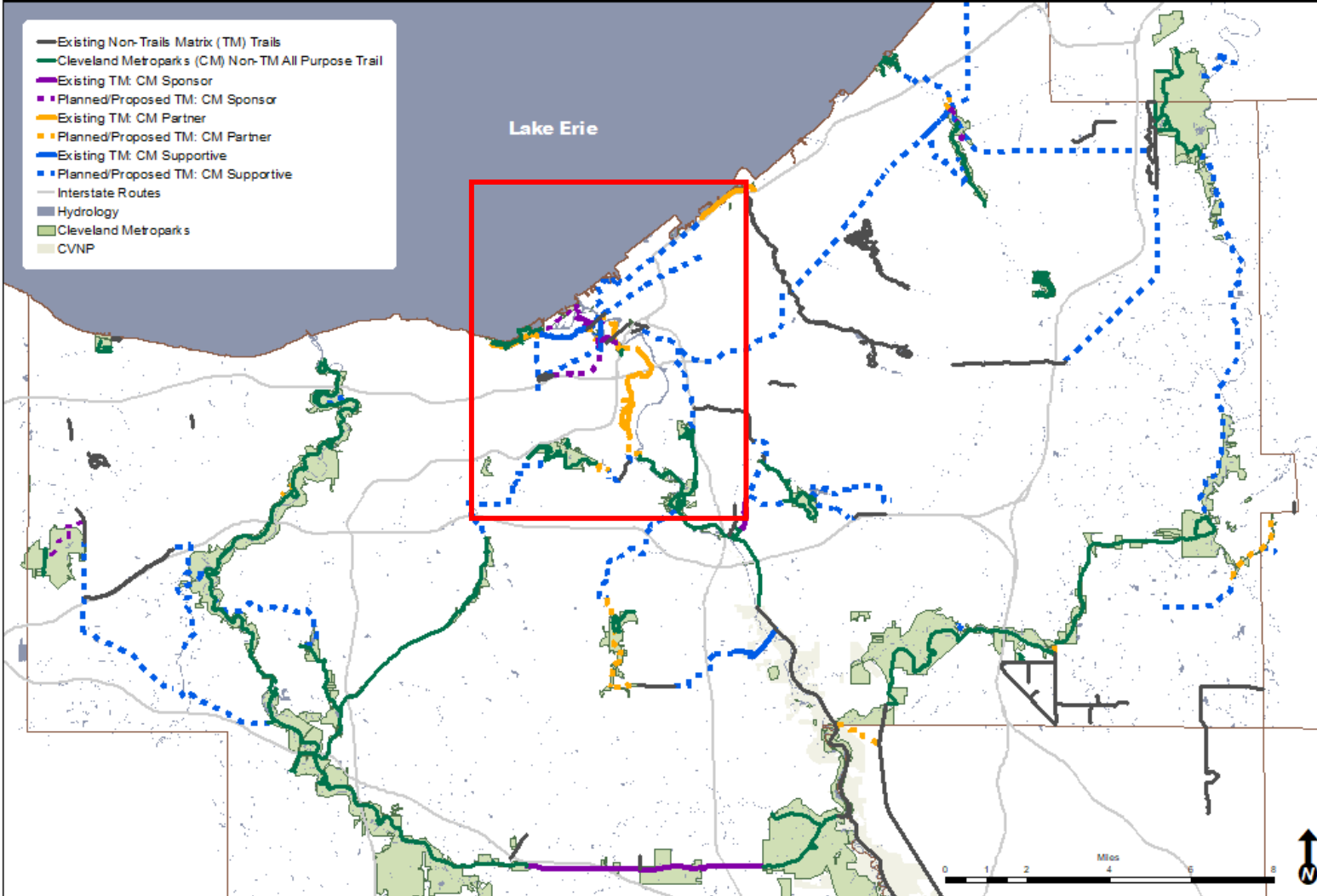
New Planned/Proposed Trails Matrix Trails - Round 5



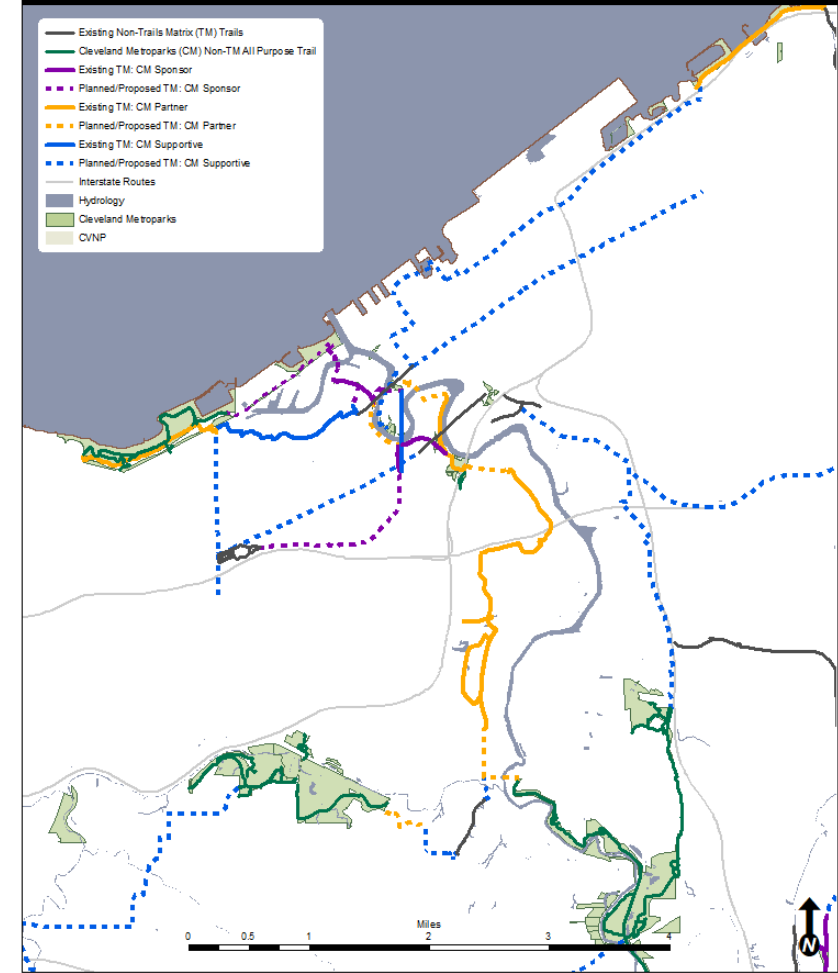
New Planned/Proposed Trails Matrix Trails - Round 5



Existing and Planned/Proposed Trails Matrix Trails - Cleveland Metroparks Sponsor, Partner, or Supportive



Existing and Planned/Proposed Trails Matrix Trails - Cleveland Metroparks Sponsor, Partner, or Supportive





CUYAHOGA
greenways



To further show support for this foundational planning document and as a sign of commitment to advancing the proposed network of trails, staff asks the **Board authorize a resolution to adopt the *Cuyahoga Greenways Plan*** as a guiding planning document for Cleveland Metroparks for the continued development of Cuyahoga County's trail network

Discussion